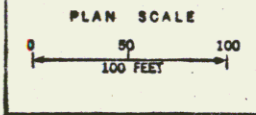
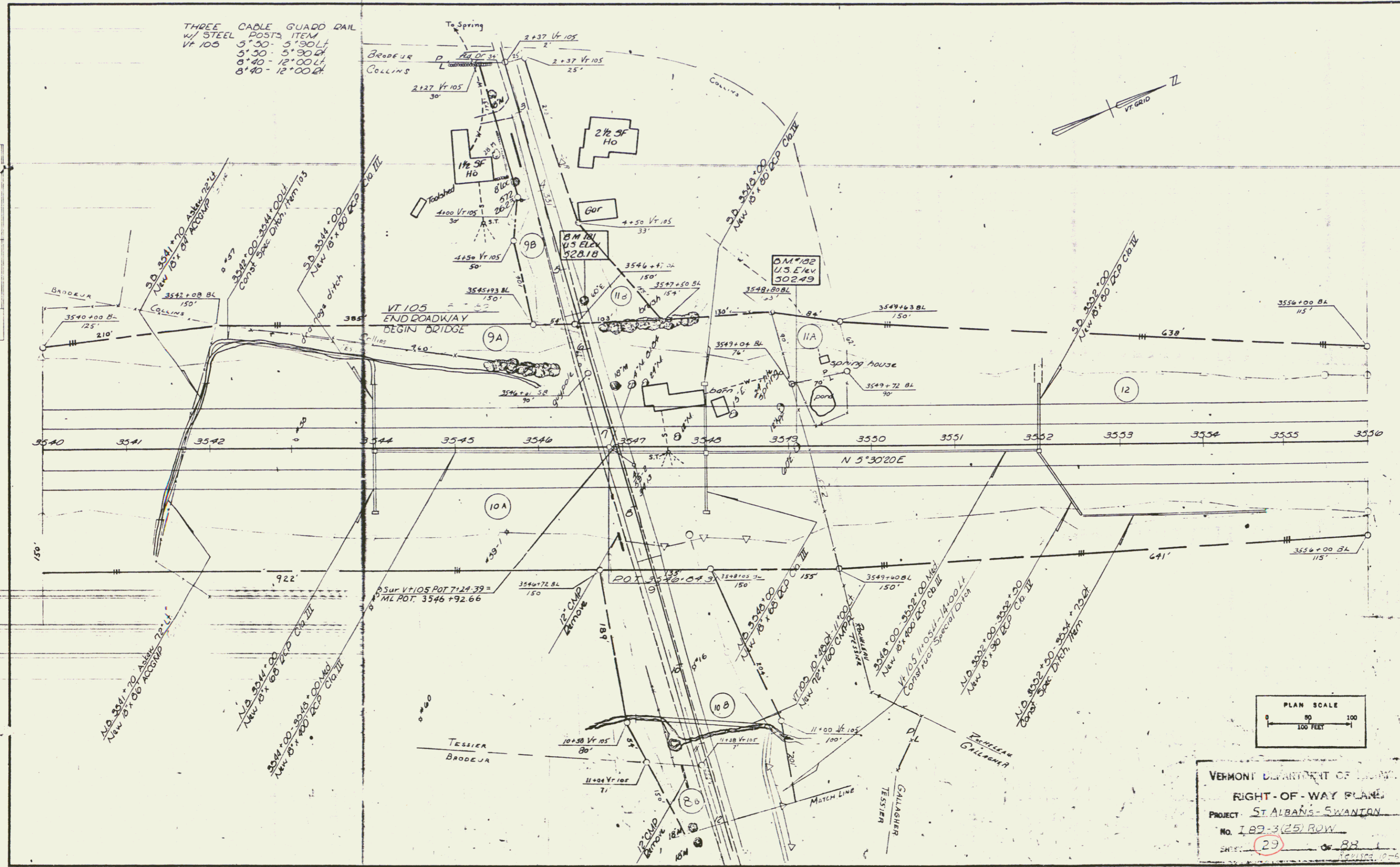


THREE CABLE GUARD RAIL
W/ STEEL POSTS ITEM
VT 105
5' 50" - 5' 30" LT
5' 30" - 5' 30" RT
8' 40" - 12' 00" LT
8' 40" - 12' 00" RT

PLAN
DATE
SCALE
PROJECT
NO.
SHEET



VERMONT DEPARTMENT OF TRANSPORTATION
RIGHT-OF-WAY PLANS
PROJECT - ST. ALBANS - SWANTON
NO. 189-3(25) ROW
SHEET 23 OF 88
REVISED 10-6-64