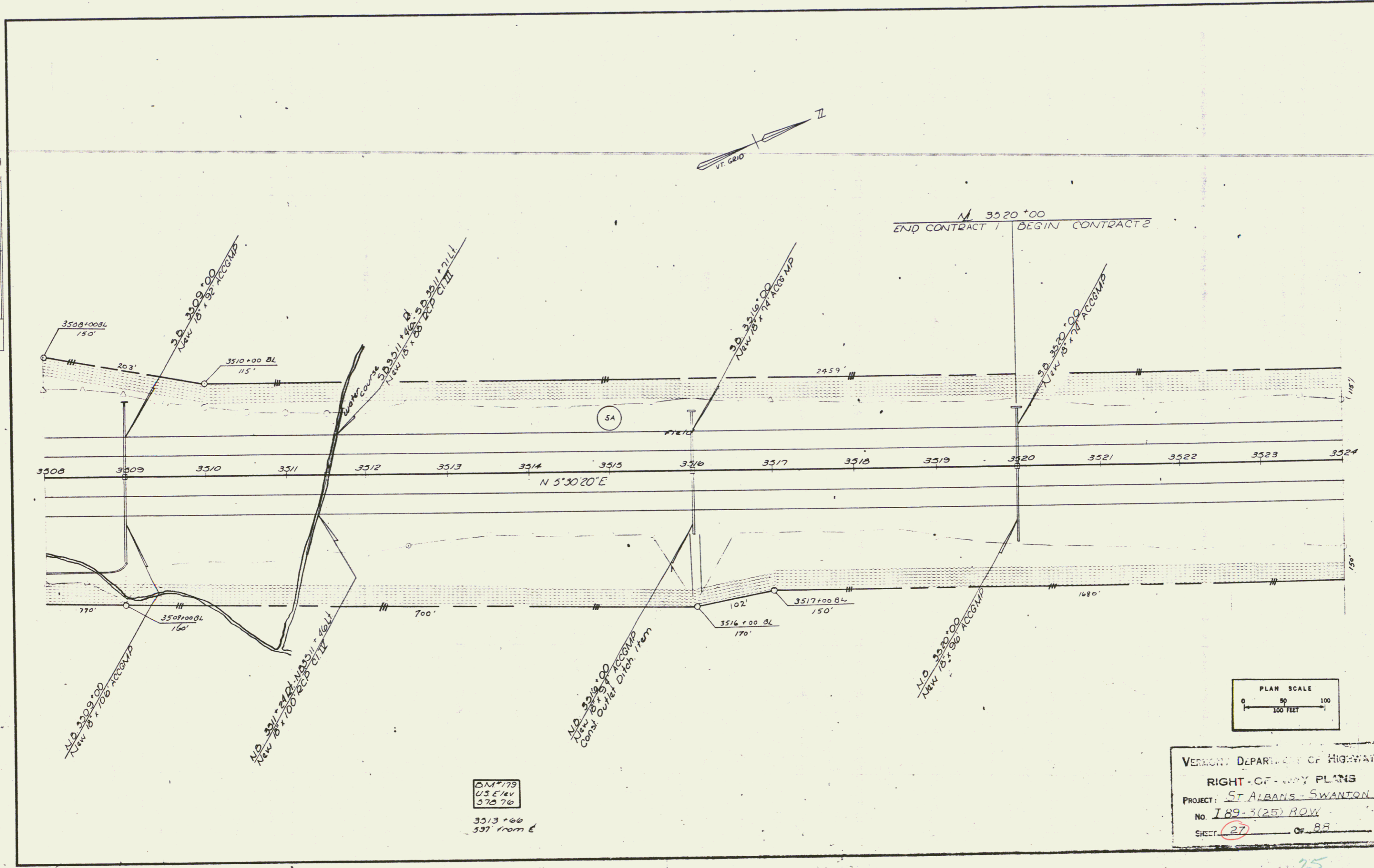
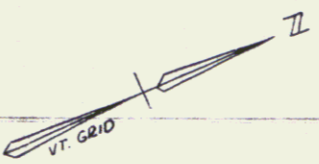
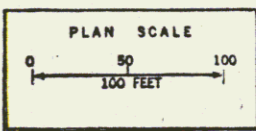


PLAN  
 DRAWN BY  
 CHECKED BY  
 DATE  
 NO.



2M 179  
 U.S.E. 4V  
 570 70  
 3513 + 00  
 397' from E



VERMONT DEPARTMENT OF HIGHWAYS  
 RIGHT-OF-WAY PLANS  
 PROJECT: ST. ALBANS - SWANTON  
 No. 189-3(25) ROW  
 SHEET 27 OF 88

25