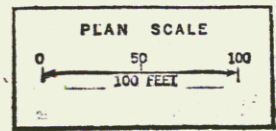
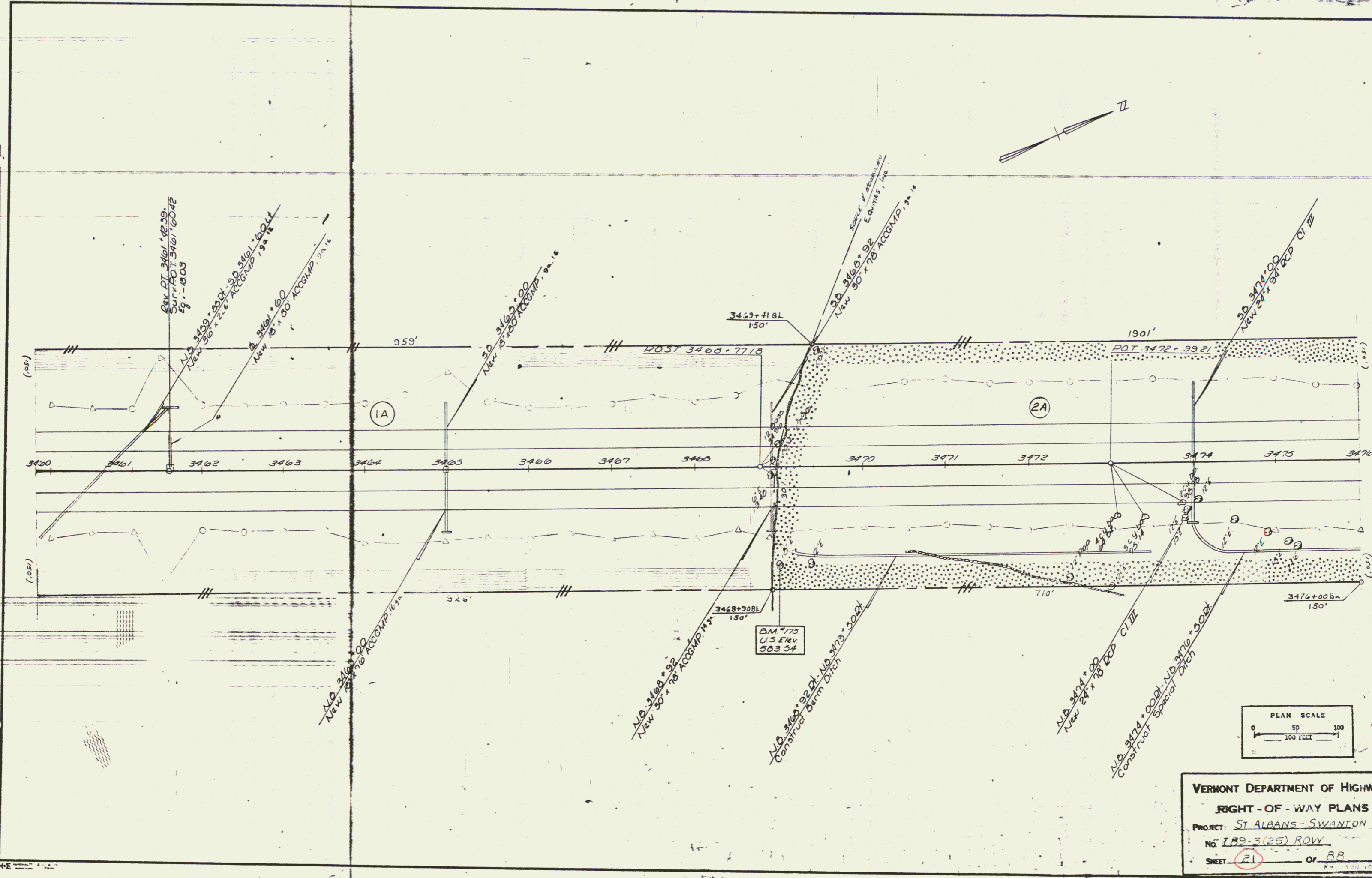


PLAN	DATE	BY
ST ALBANS - SWANTON	10/15/88	W. J. ...
NO. 189-3(25) ROW		
SHEET 21		OF 88



VERMONT DEPARTMENT OF HIGHWAYS
 RIGHT-OF-WAY PLANS
 PROJECT: ST ALBANS - SWANTON
 NO. 189-3(25) ROW
 SHEET 21 OF 88