

PLAN	SUBMITTED	APPROVED
DATE	BY	FOR
1/23/53	W. H.
1/23/53
1/23/53

PROPERTY LINE FENCE w/ STEEL POSTS, MOD. ITEM 583-II
 S.B. 3380+00 - 3396+00 Lt.
 N.B. 3380+00 - 3396+00 Rt.

* THREE CABLE GUARD RAIL w/ LIGHT STEEL POSTS. ITEM 538
 NB 3380+00 Lt. - 3383+54 Lt.
 NB 3394+68 Lt. - 3396+00 Lt.
 SB 3380+00 Lt. - 3382+41 Lt.
 SB 3394+28 Lt. - 3396+00 Lt.

* JUTE MATTING- ITEM 623
 N.B. 3380+00 - 3387+00 Rt.
 S.B. 3380+00 - 3390+00 Rt.

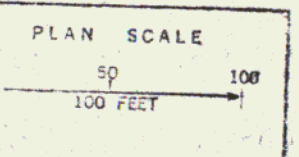
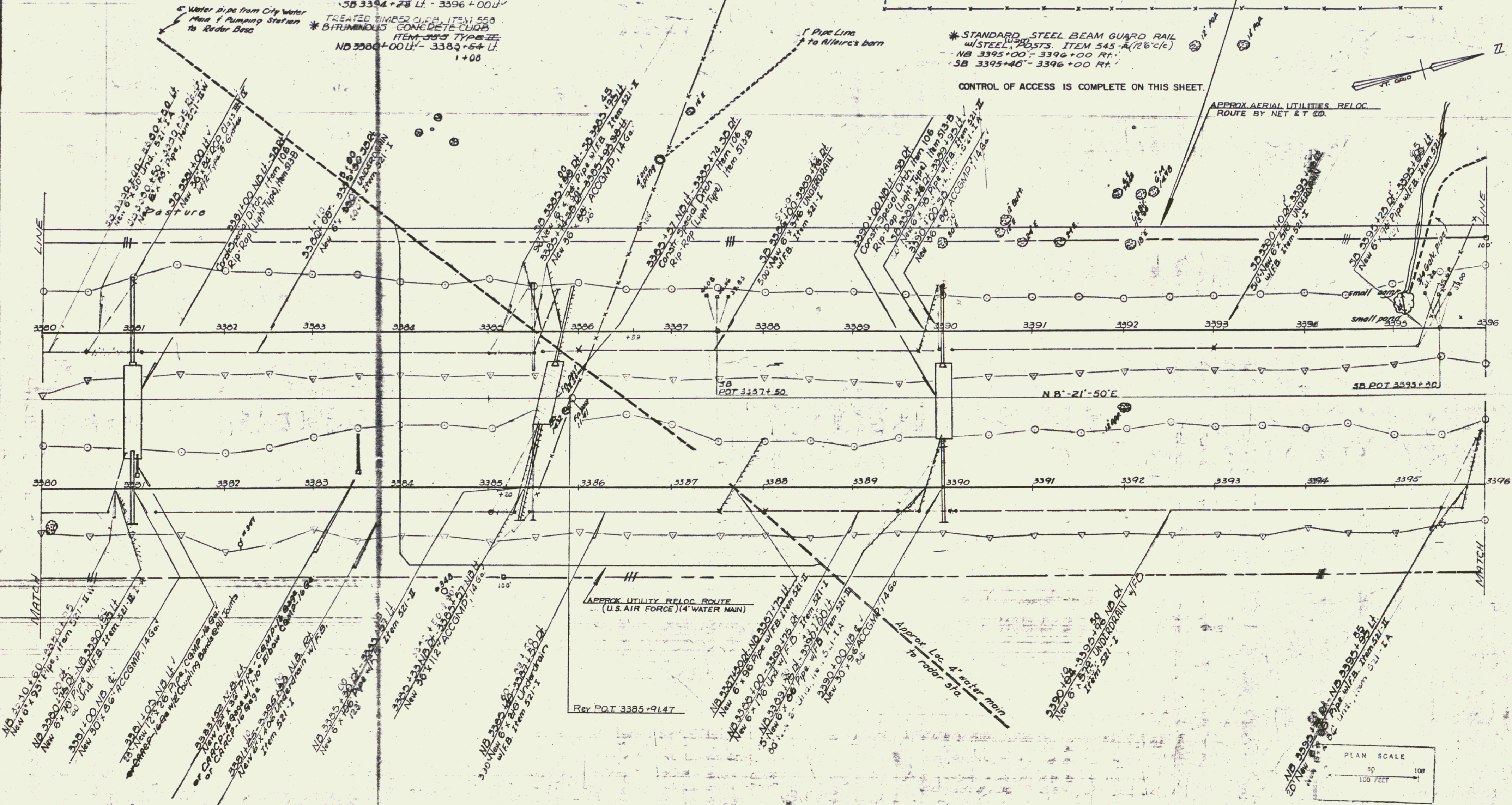
NOTE: * DENOTES ITEMS TO BE INCLUDED IN STAGE II CONSTRUCTION.

INDIVIDUAL WATER SOURCES
 DUG SPRING S.B.L. 3386+90 - 190' LT
 FARM POND S.B.L. 3395+15 - 25' LT

* STANDARD STEEL BEAM GUARD RAIL w/ STEEL POSTS. ITEM 545-A (126' C/C)
 NB 3395+00 - 3396+00 Rt.
 SB 3395+46 - 3396+00 Rt.

CONTROL OF ACCESS IS COMPLETE ON THIS SHEET.

APPROX AERIAL UTILITIES RELOC. ROUTE BY NET & T CO.



Stage 2 Construction
 GEORGIA-FAIRFAX-FAIRFIELD-ST. ALBANS
 I 89-3 (41)
 Sheet 93 of 213