

PLAN	DATE
ADJUSTED	3/27/11
PLATTED	3/27/11
CHECKED	3/27/11
BY	3/27/11
NO.	3/27/11

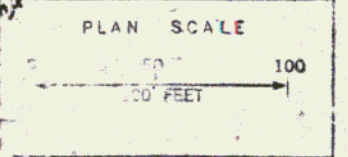
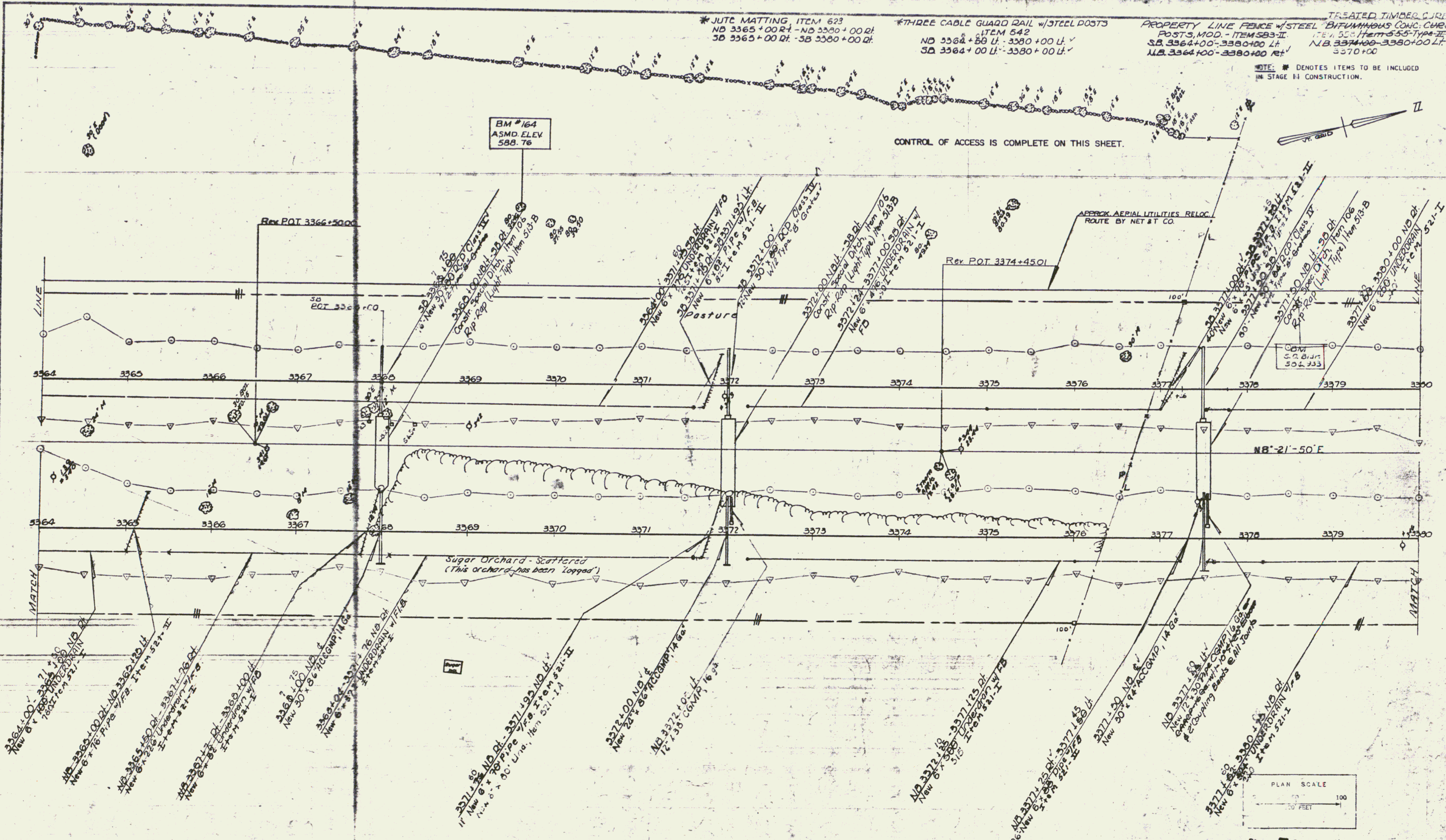
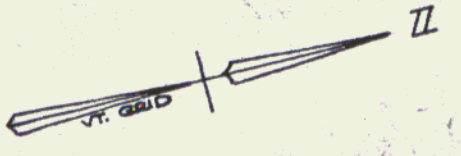
\* JUTE MATTING, ITEM 623  
 ND 3365+00 RT - ND 3380+00 RT  
 SD 3365+00 DL - SB 3380+00 DL

\* THREE CABLE GUARD RAIL w/ STEEL POSTS  
 ITEM 542  
 ND 3364+88 LT - 3380+00 LT  
 SD 3364+00 LT - 3380+00 LT

TREATED TIMBER CURB  
 BITUMINOUS CONC. CURB  
 POSTS, MOD. - ITEM 583-II  
 I.T.E. # 555 Item 555-TYPE II  
 S.B. 3364+00 - 3380+00 LT  
 N.B. 3374+88 - 3380+00 LT  
 3370+00

NOTE: \* DENOTES ITEMS TO BE INCLUDED IN STAGE II CONSTRUCTION.

CONTROL OF ACCESS IS COMPLETE ON THIS SHEET.



Stage 2 Construction

GEORGIA-FAIRFAX-FAIRFIELD-ST. ALBANS

I 89-3 (41)

Sheet 91 of 213