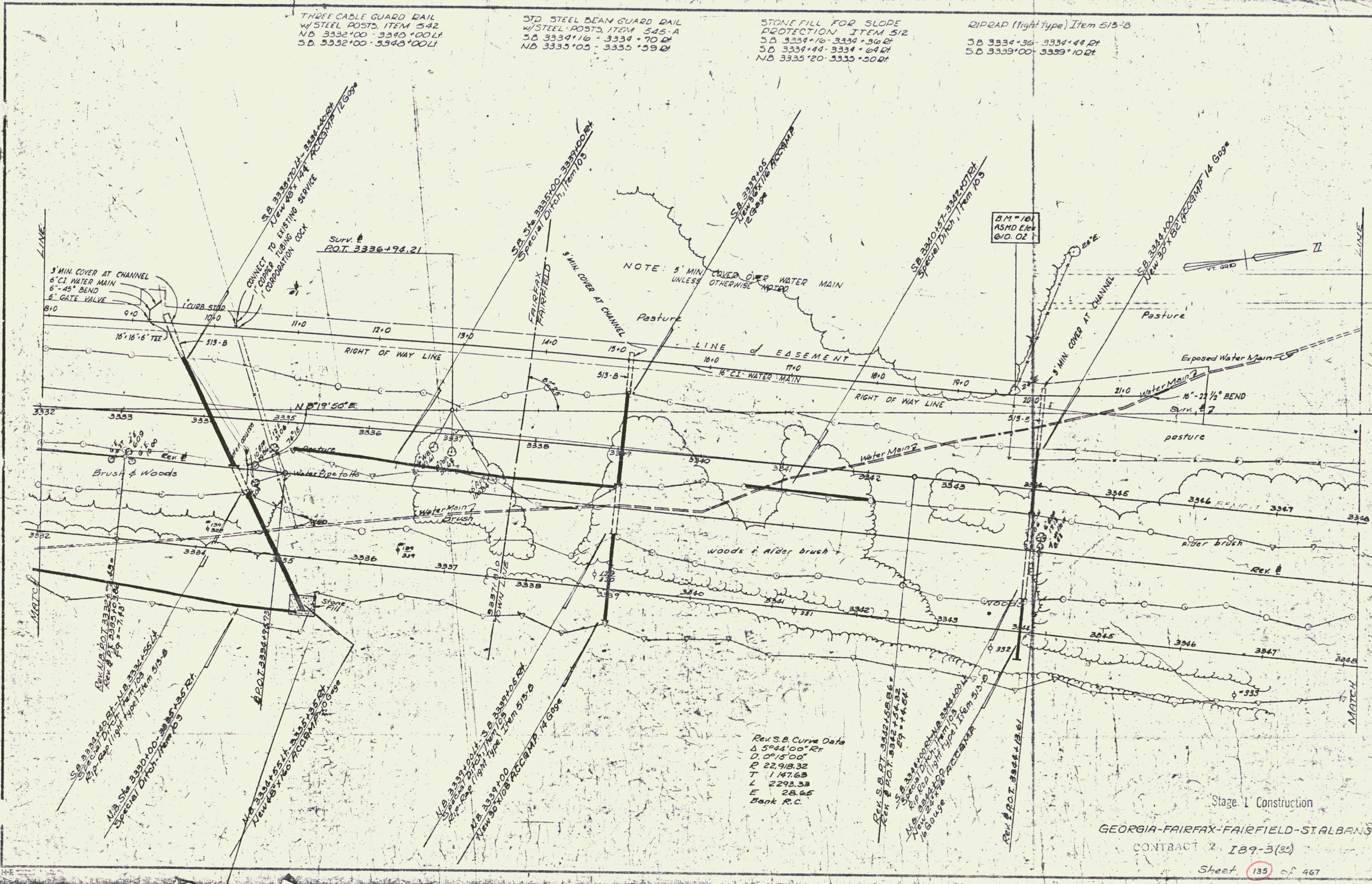


THREE CABLE GUARD RAIL  
W/STEEL POSTS, ITEM 542  
NB 3332+00 - 3340+00 Lt  
SB 3332+00 - 3340+00 Rt

STD STEEL BEAM GUARD RAIL  
W/STEEL POSTS, ITEM 545-A  
SB 3334+16 - 3334+70 Rt  
NB 3335+05 - 3335+59 Lt

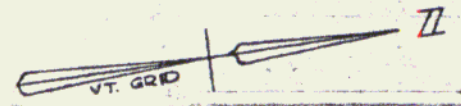
STONE FILL FOR SLOPE  
PROTECTION, ITEM 512  
SB 3334+16 - 3334+36 Rt  
SB 3334+44 - 3334+64 Rt  
NB 3335+20 - 3335+50 Lt

RIPRAP (light type) Item 513-B  
SB 3334+36 - 3334+44 Rt  
SB 3339+00 - 3339+10 Rt



NOTE: 5' MIN COVER OVER WATER MAIN UNLESS OTHERWISE NOTED

B.M. = 101  
ASHD Elev  
610.02



Rev S.B. Curve Data  
Δ 5°44'00" Rt  
D 0°15'00"  
R 22,918.32  
T 1,147.63  
L 2293.33  
E 28.65  
Bank R.C.

Stage 1 Construction

GEORGIA-FAIRFAX-FAIRFIELD-ST. ALBANS  
CONTRACT 2, IB9-3(85)

Sheet 135 of 467