

PROPERTY LINE FENCE W/STEEL POSTS,
MOD.
S.B. 3332+00'-3343+00' Lt.
N.B. 3332+00'-3343+00' Rt.

*THREE CABLE GUARD RAIL
W/STEEL POSTS ITEM 542
N.B. 3332+00'-3343+00' Lt.
S.D. 3332+00'-3343+00' Lt.

*STD. STEEL BEAM GUARD RAIL, LIGHT
W/STEEL POSTS ITEM 545-A (12'6" ct)
S.D. 3333+06'-3335+40' Lt.
N.D. 3333+06'-3335+40' Lt.

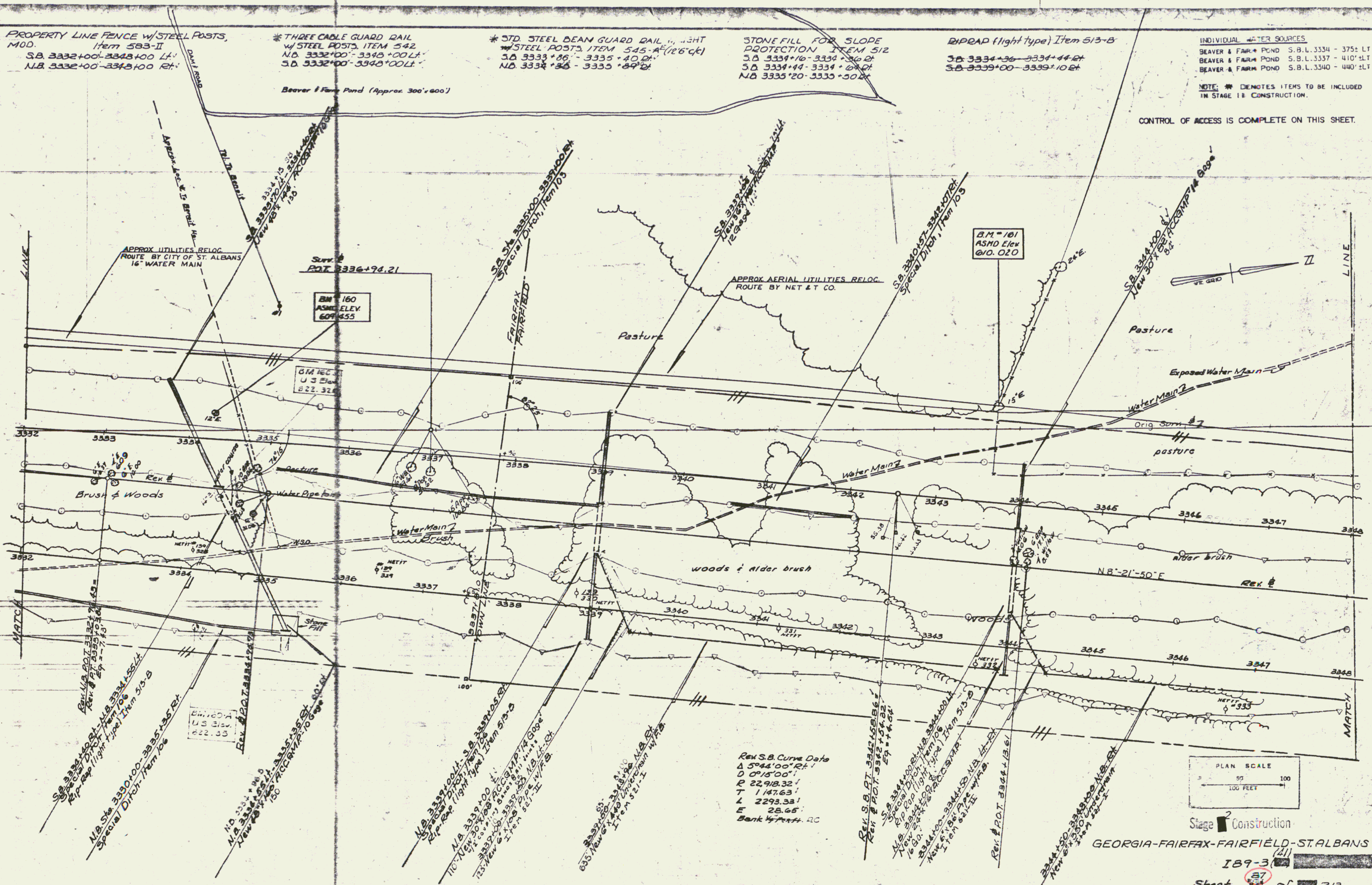
STONE FILL FOR SLOPE
PROTECTION ITEM 512
S.D. 3334+16'-3334+36' Lt.
S.D. 3334+44'-3334+64' Lt.
N.D. 3335+20'-3335+50' Lt.

RIPRAP (light type) Item 513-B
S.D. 3334+36'-3334+44' Lt.
S.D. 3339+00'-3339+10' Lt.

INDIVIDUAL WATER SOURCES
BEAVER & FAIR POND S.B.L. 3334 - 375± LT
BEAVER & FAIR POND S.B.L. 3337 - 410± LT
BEAVER & FAIR POND S.B.L. 3340 - 440± LT

NOTE: * DENOTES ITEMS TO BE INCLUDED
IN STAGE I & CONSTRUCTION.

CONTROL OF ACCESS IS COMPLETE ON THIS SHEET.



B.M. 101
ASMD Elev
@10.020

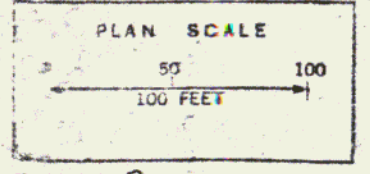
Surv. 2
P.O.T. 3336+94.21

B.M. 160
ASMD Elev
607.455

B.M. 166
U.S. Elev
@22.320

B.M. 160
U.S. Elev
@22.33

Rev S.B. Curve Data
Δ 59°44'00" Rt.
D 0°15'00"
R 22,918.32'
T 1,147.63'
L 2293.33'
E 28.65'
Bank 1/2 Perf. RC



Stage 2 Construction
GEORGIA-FAIRFAX-FAIRFIELD-ST. ALBANS

189-3
Sheet 87 of 213