

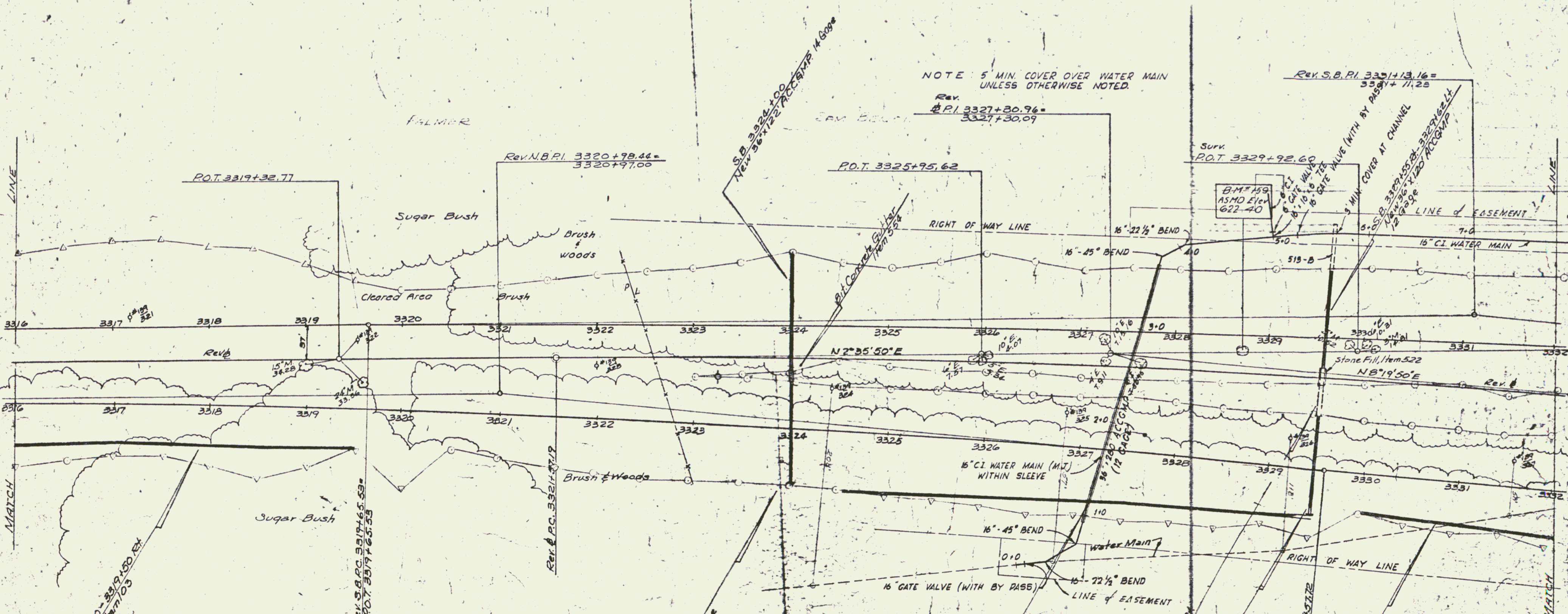
DIPRAP (light type) Item 513-B  
S.B. 3329+51 - 3329+59 Rt.

THREE CABLE GUARD RAIL  
w/ STEEL POSTS, ITEM 542  
N.B. 3321+50 - 3332+00 Lt.  
S.D. 3325+47 - 3332+00 Lt.

NOTE: 5' MIN. COVER OVER WATER MAIN  
UNLESS OTHERWISE NOTED.

Rev.  
P.I. 3327+30.96 =  
3327+30.09

Rev. S.B. P.I. 3331+13.16 =  
3331+11.25



Rev. N.B. Curve Data

Δ	5° 44' 00" Rt.
D	0° 20' 00"
R	17188.74
T	860.72
L	1720.00
E	21.49
Bank	RC

Rev. Curve Data

Δ	5° 44' 00" Rt.
D	0° 30' 00"
R	11459.16
T	573.77
L	1146.67
E	14.36
Bank	RC

Rev. S.B. Curve Data

Δ	5° 44' 00" Rt.
D	0° 15' 00"
R	22918.82
T	1147.63
L	2298.89
E	28.66
Bank	RC

Stage I Construction  
GEORGIA-FAIRFAX-FAIRFIELD-ST. ALBANS

CONTRACT 2 I 89-3 (35)

Sheet 134 of 467

AMERICAN CONSULTING ENGINEERS  
INCORPORATED  
1000 W. BROAD ST.  
ATLANTA, GA 30333  
PHONE 404-525-8800  
FAX 404-525-8801