

PLAN	DESIGNED	BY	DATE
REVISED	BY	DATE	
BY	DATE		
BY	DATE		
BY	DATE		
BY	DATE		
BY	DATE		
BY	DATE		
BY	DATE		
BY	DATE		

PROPERTY LINE FENCE W/ STEEL POSTS, MOD.
Item 583 II
S.B. 3300+00 - 3316+00 Lt.
N.B. 3300+00 - 3316+00 Rt.

*THREE CABLE GUARD RAIL W/
LIGHT STEEL POSTS, ITEM 538
N.B. 3300+00 - 3307+95 Lt.
S.B. 3300+45 - 3311+05 Lt.

*JUTE MATTING - ITEM 623
N.B. 3300+00 - 3313+00 Lt.

INDIVIDUAL WATER SOURCES
DUG WELL S.B.L. 3303± - 1200'± LT
DUG SPRING S.B.L. 3303± - 1300'± LT

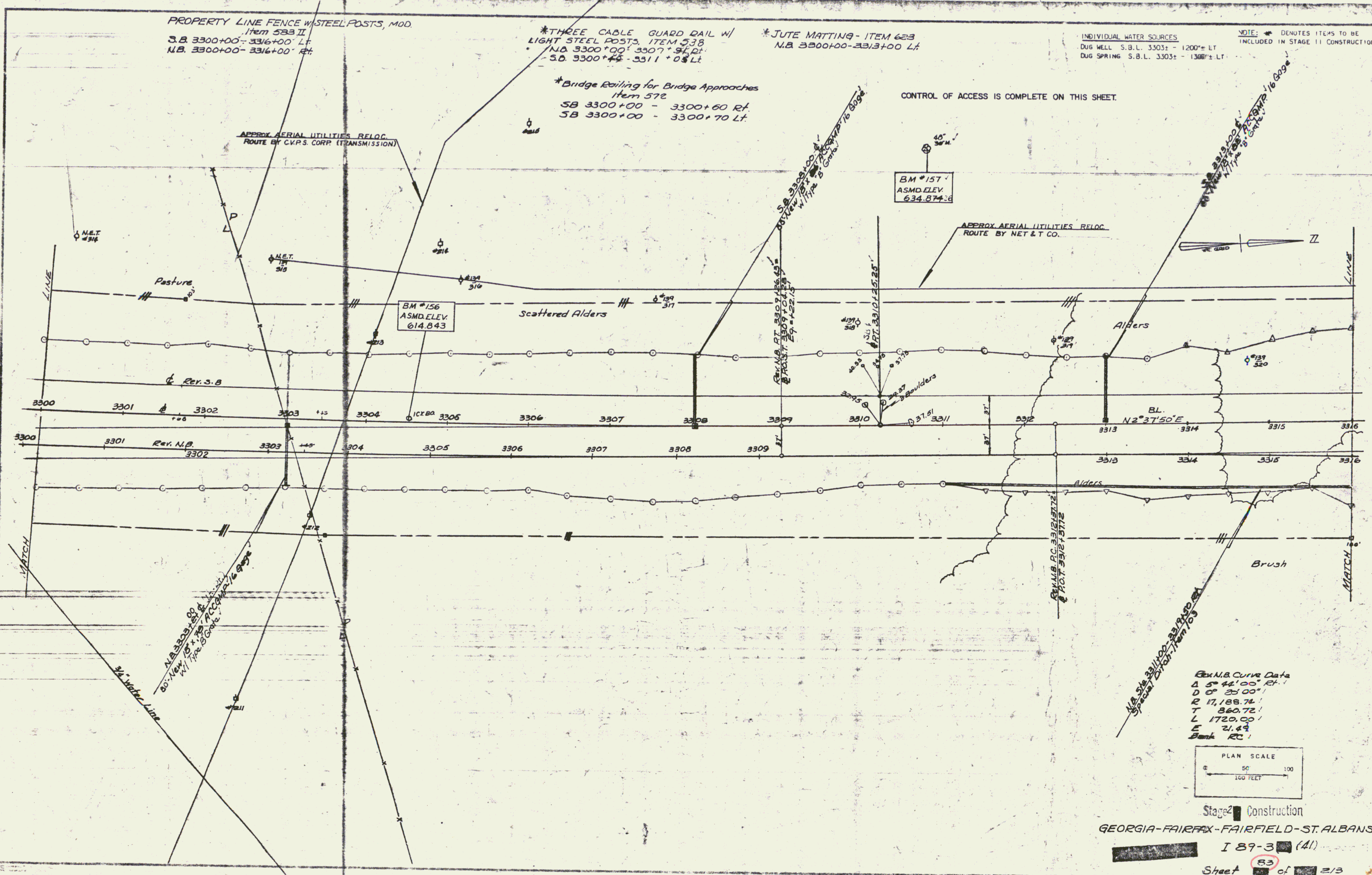
NOTE: * DENOTES ITEMS TO BE INCLUDED IN STAGE II CONSTRUCTION.

*Bridge Railing for Bridge Approaches
Item 572
SB 3300+00 - 3300+60 Rt.
SB 3300+00 - 3300+70 Lt.

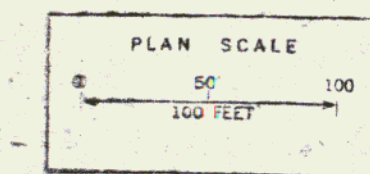
CONTROL OF ACCESS IS COMPLETE ON THIS SHEET.

APPROX AERIAL UTILITIES RELOC.
ROUTE BY CVRS. CORP. (TRANSMISSION)

APPROX AERIAL UTILITIES RELOC.
ROUTE BY NET & T CO.



Gen N.B. Curve Data
Δ 5° 44' 00" Rt.
D 0° 20' 00"
R 17,188.74'
T 860.72'
L 1720.00'
E 21.43'
Bank RC!



Stage 2 Construction
GEORGIA-FAIRFAX-FAIRFIELD-ST. ALBANS
I 89-3 (41)
Sheet 83 of 213