

Drilling & Presplitting of Solid Rock Item 125
 3066+25 - 3070+25 NB & SB
 3066+41 - 3070+57 NB & SB

PROPERTY LINE FENCE w/
 STEEL POSTS MOD. ITEM 583-II
 SB 3064+00 - 3078+00 Lt
 NB 3064+00 - 3078+00 Rt
 3076+00 Rt

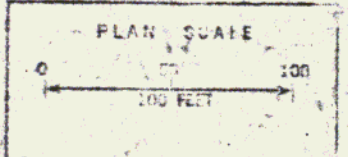
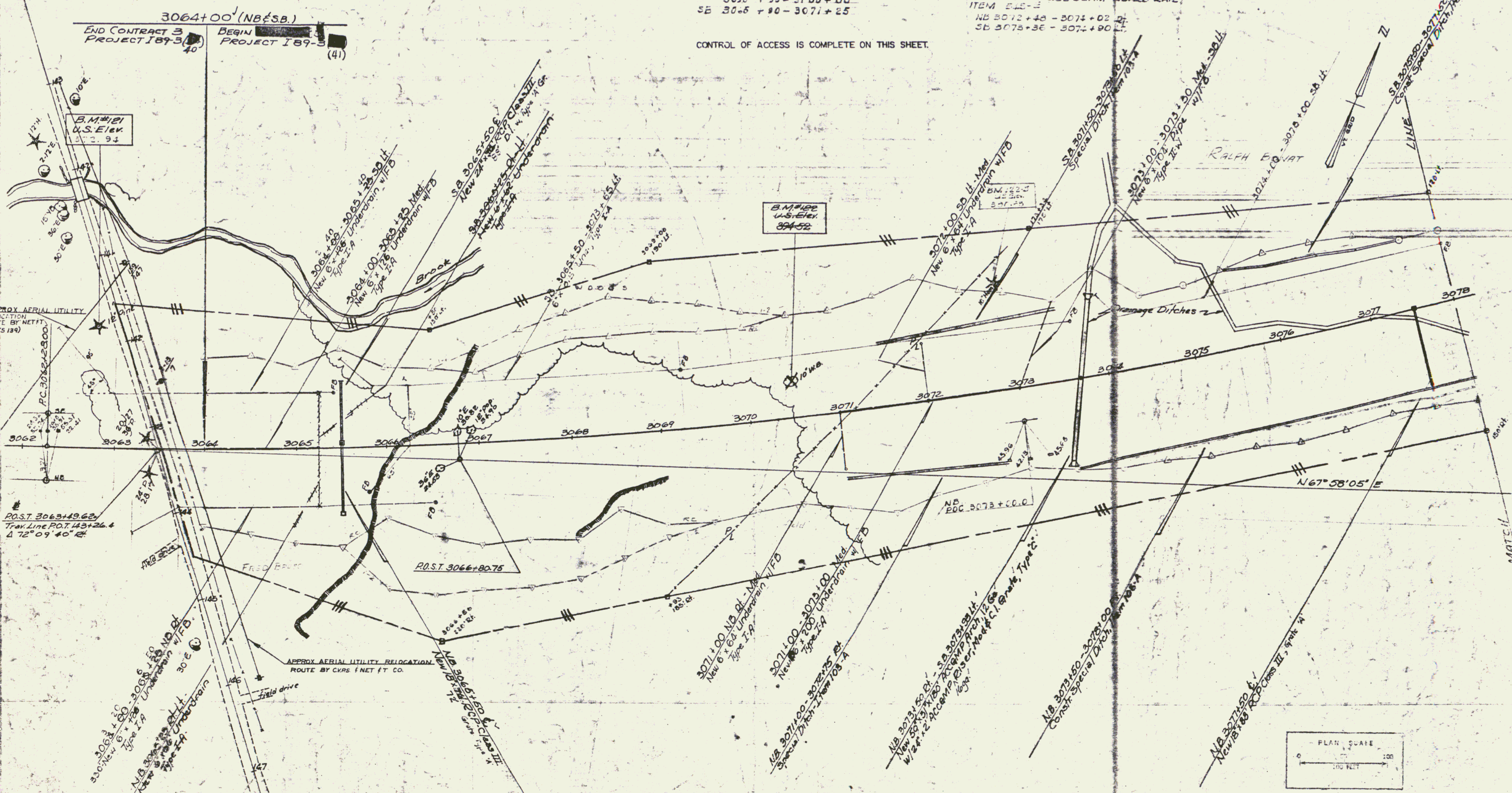
DRILLING & BLASTING OF SOLID
 ROCK SUBGRADE ITEM 115
 NB 3065+50 - 3071+50
 SB 3065+50 - 3071+50
 NB 3065+75 - 3070+75
 3065+35 - 3100+00
 SB 3065+90 - 3071+25

* STANDARD STEEL BEAM GUARD
 RAIL w/ STEEL POSTS, ITEM 545-A (12'6" C/L)
 NB 3072+50 - 3074+04 Lt
 SB 3073+46 - 3075+00 Lt
 * STANDARD STEEL BEAM GUARD RAIL
 ITEM 545-B
 NB 3072+48 - 3074+02 Lt
 SB 3073+36 - 3074+90 Lt

INDIVIDUAL WATER SOURCES
 LUG WELL BL 3073± - 1600' RT
 FARM PASTURE POND BL 3074± - 700' LT
 DUG WELL BL 3075± - 900' LT
 * DENOTES STAGE II CONSTRUCTION

CONTROL OF ACCESS IS COMPLETE ON THIS SHEET.

DATE	12-8-83
BY	Boundary
Checked	Clay
Approved	Clay
PLN	189-3
NO.	50



Stage II Construction
 GEORGIA-FAIRFAX-FAIRFIELD-ST. ALBANS.
 189-3 (41)
 Sheet 50 of 213