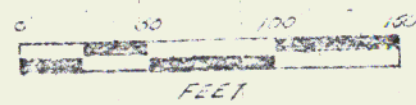
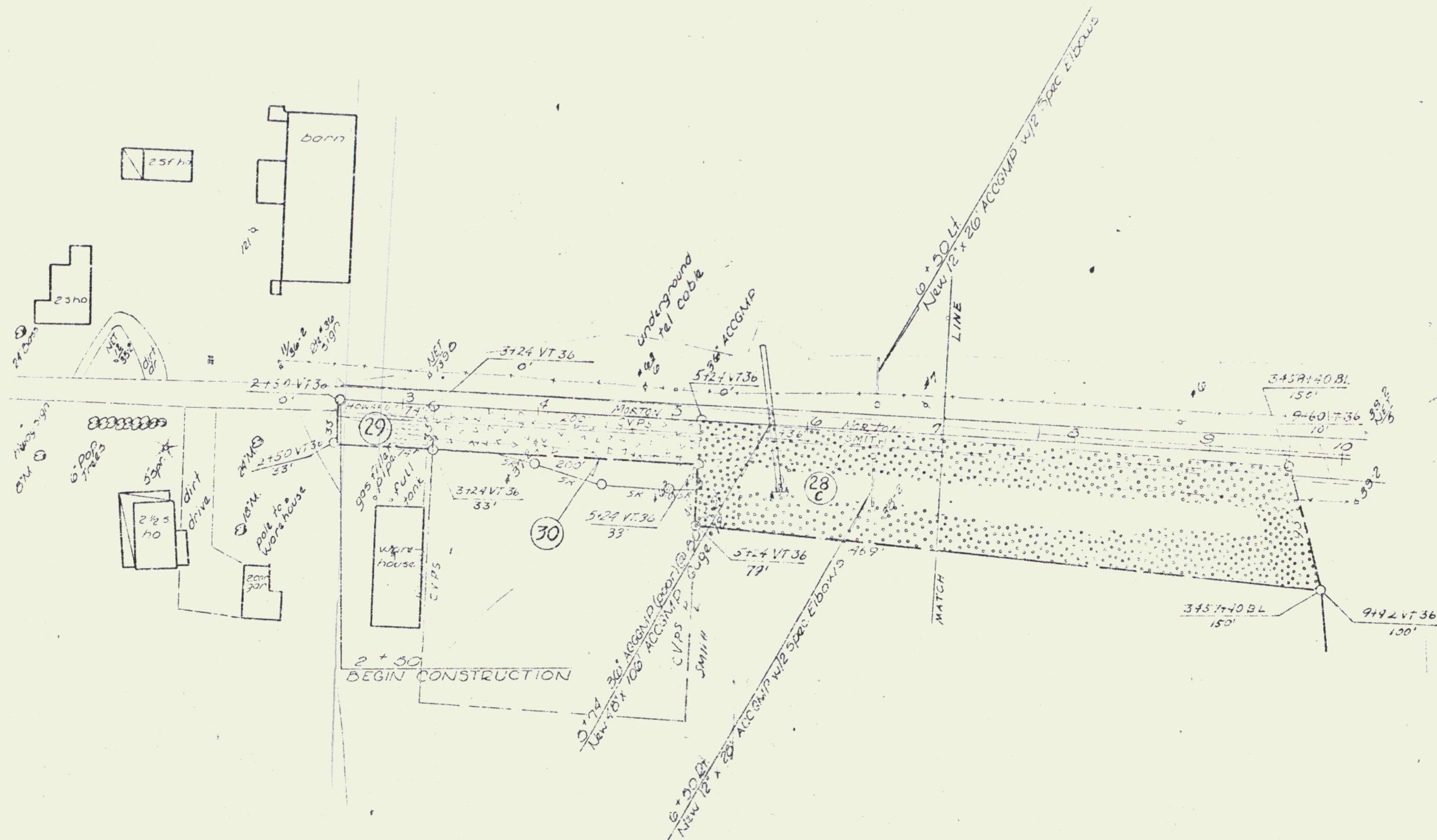
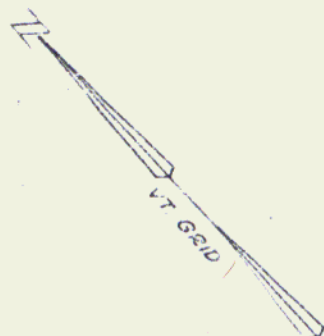


CONSTRUCT DRIVE
2' 64" RT - 3' 32" LT

THREE CABLE GUARD RAIL
W/STEEL POSTS, ITEM # 77
4' 98" - 9' 78" LT
4' 94" - 9' 90" RT



VERMONT DEPARTMENT OF HIGHWAYS
RIGHT-OF-WAY PLANS
PROJECT: GEORGIA - ST. ALBANS
NO. I 89-312A
SHEET 46 OF 76

DATE: 11/15/89
BY: J. J. [unclear]
CHECKED: [unclear]
SCALE: AS SHOWN
NOTE: SEE PLANS FOR ALL DIMENSIONS
VC