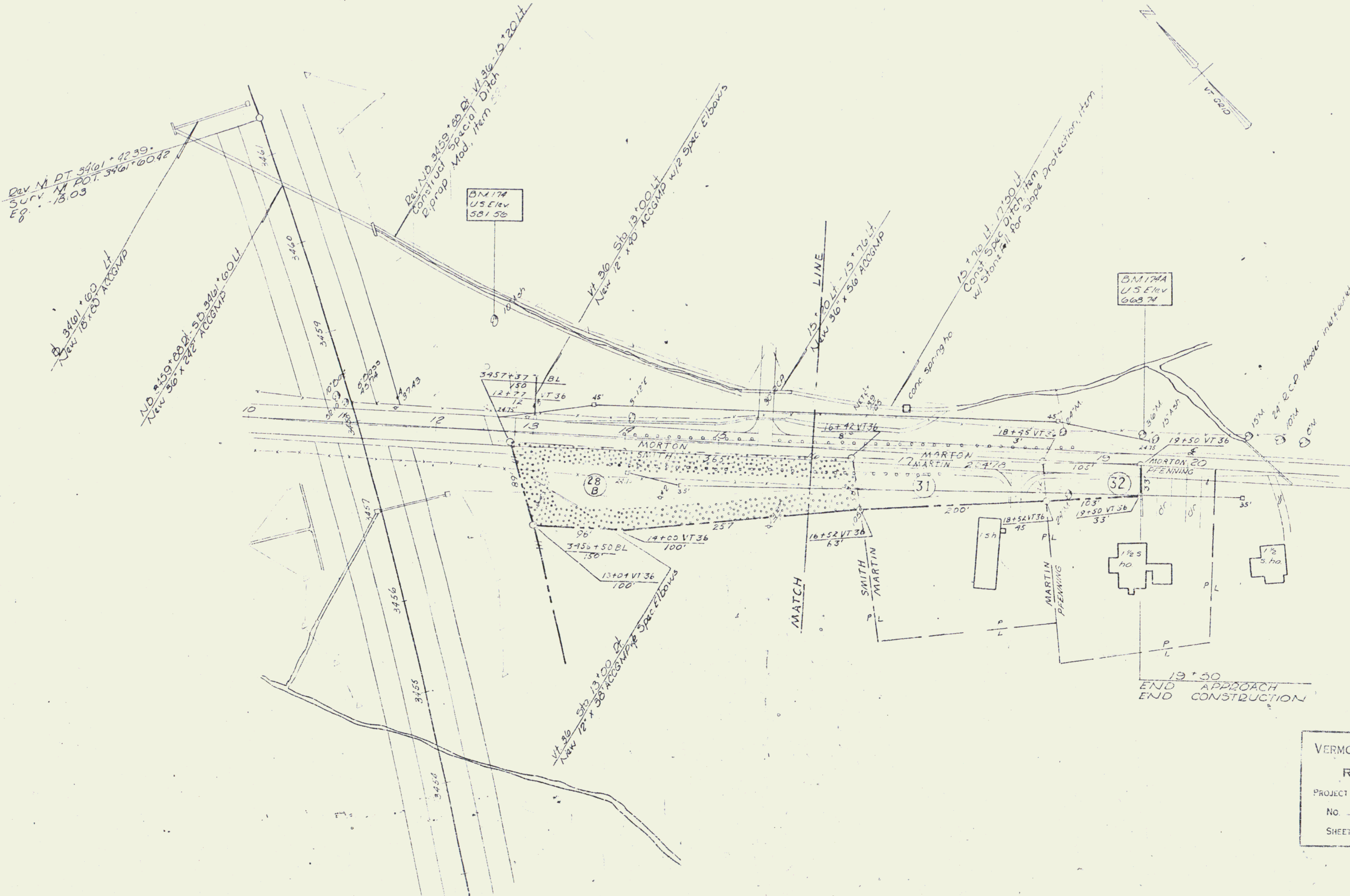


THREE CABLE GUARD RAIL  
w/ STEEL POSTS ITEM 247  
12° 52' - 13° 40' Lt  
15° 04' - 18° 04' Lt  
12° 58' - 17° 06' Lt

CONSTRUCT DRIVE  
15° 50' Lt  
18° 16' Rt

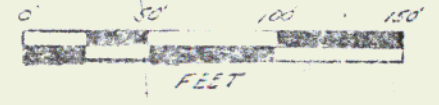
TREATED TIMBER CURB  
Item  
13° 00' - 16° 00' Lt  
13° 00' - 16° 00' Rt

PLAN SUBMITTED  
DATE: 10/1/03  
BY: [Signature]  
CHECKED: [Signature]  
DATE: 10/1/03



B.M. 174  
U.S. Elev  
663.74

19+50  
END APPROACH  
END CONSTRUCTION



VERMONT DEPARTMENT OF HIGHWAYS  
RIGHT-OF-WAY PLANS  
PROJECT: GEORGIA - ST ALBANS  
No. I 89-3(28)  
SHEET 45 OF 76