

THREE CABLE GUARD RAIL w/STEEL POSTS  
ITEM

NB 3380+00 Lt. - 3383+54 Lt.  
NB 3394+60 Lt. - 3396+00 Lt.  
SB 3380+00 Lt. - 3391+45 Lt.  
SB 3395+30 Lt. - 3396+00 Lt.

BITUMINOUS CONCRETE CURB  
ITEM  
NB 3380+00 Lt. - 3383+54 Lt.

4" Water Pipe from City Water  
Main & Pumping Station  
to Radar Base

1" Pipe Line  
to Allaire's barn

STATE to USA.

AREA A (0.03 A)

Decd of Easement  
7/11/67 BK 22

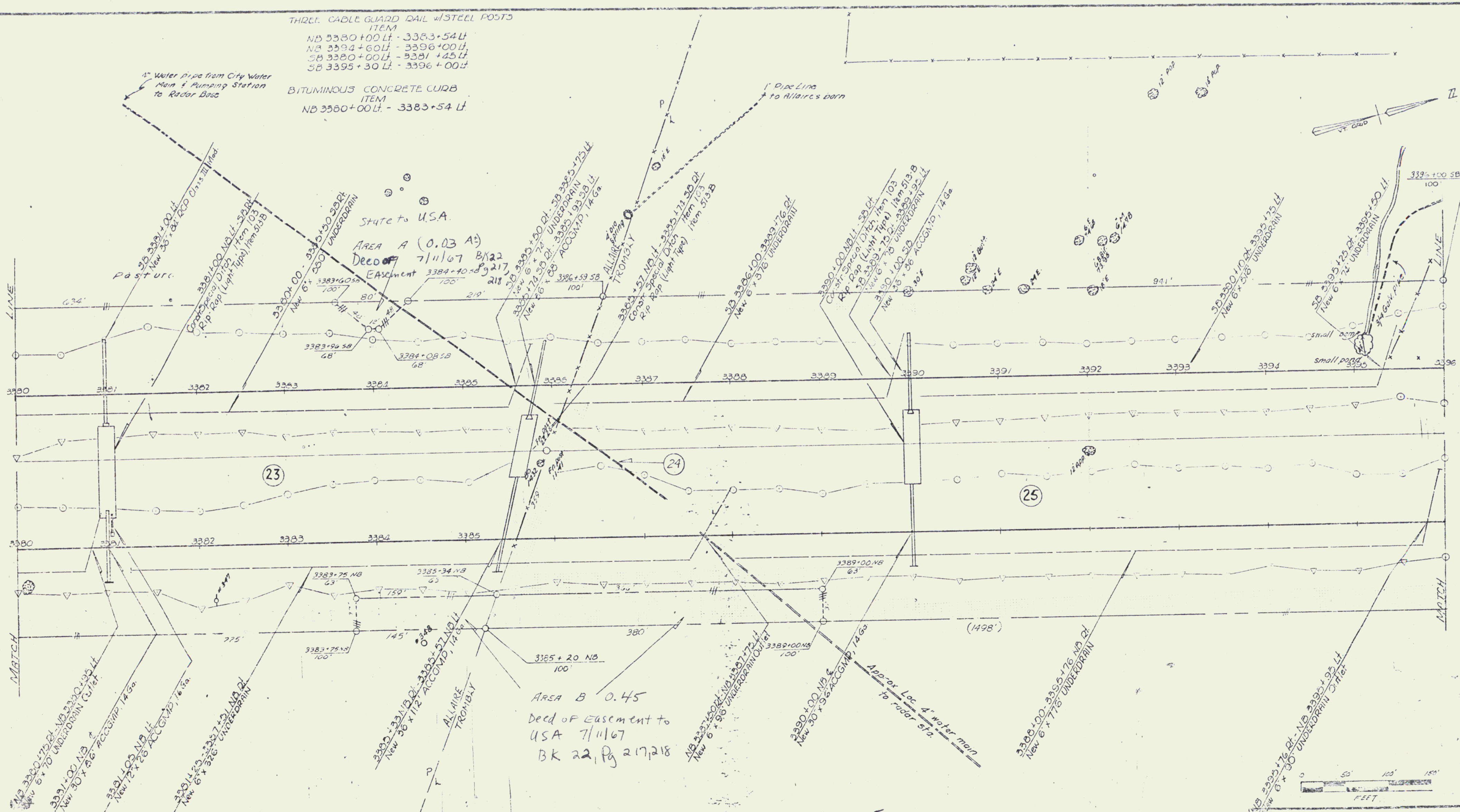
Easement 3384+40 to 3392+217

AREA B 0.45

Decd of Easement to  
USA 7/11/67

BK 22, Pg 217, 218

See also QCD to Dept. of Defense, USAir Force  
12/2/65 BK? Pg?



VERMONT DEPARTMENT OF HIGHWAYS  
 RIGHT-OF-WAY PLANS  
 PROJECT: GEORGIA-STALBANS  
 NO. 1-189-3181  
 SHEET 39 OF 76