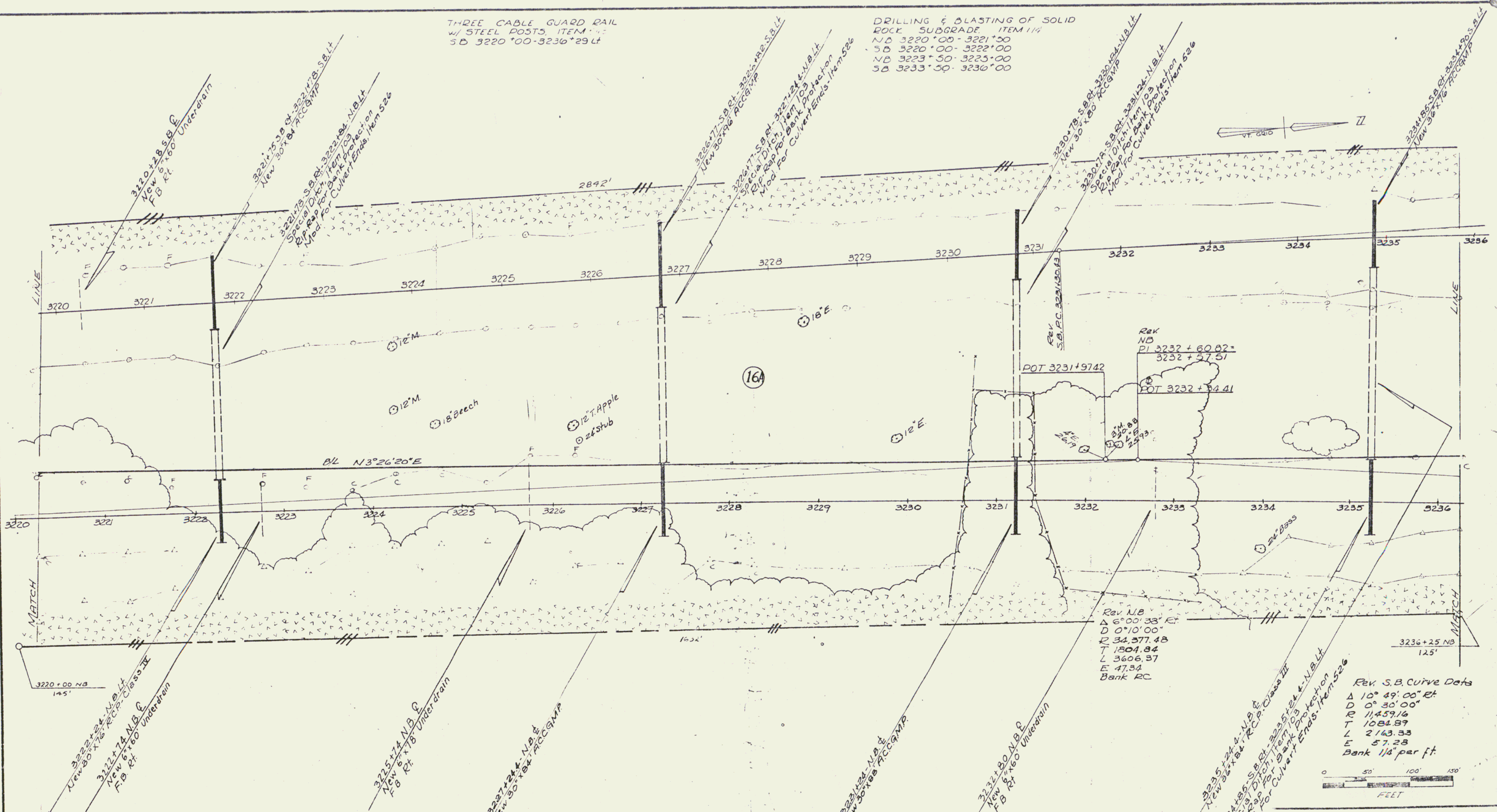


PLAN NO. 182-3(28)
 DATE 7/63
 DRAWN BY E. J. J. / 1/63
 CHECKED BY /
 DATE /
 NO. 2/63

THREE CABLE GUARD RAIL
 W/ STEEL POSTS, ITEM 114
 SB 3220+00-3236+29 Lt

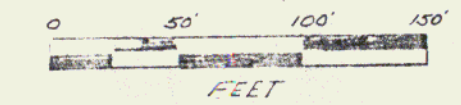
DRILLING & BLASTING OF SOLID
 ROCK SUBGRADE, ITEM 114
 NB 3220+00-3221+00
 SB 3220+00-3222+00
 NB 3223+50-3225+00
 SB 3233+50-3236+00



Rev NB
 PI 3232 + 60.82
 3232 + 57.51
 POT 3231 + 97.42
 POT 3232 + 84.41

Rev NB
 Δ 6°00'38" Rt
 D 0°10'00"
 R 34,577.48
 T 1804.84
 L 3606.87
 E 47.84
 Bank RC

Rev. S.B. Curve Data
 Δ 10°49'00" Rt
 D 0°30'00"
 R 11,459.16
 T 1084.89
 L 2163.33
 E 57.28
 Bank 1 1/2' per ft.



VERMONT DEPARTMENT OF HIGHWAYS
 RIGHT-OF-WAY PLANS
 PROJECT: GEORGIA - ST. ALBANS
 No. 182-3(28)
 SHEET 28 OF 76
 Revised 4/64