

\* THREE CABLE GUARD RAIL  
W/ STEEL POSTS ITEM 542  
2883+76 - 2886+16 - S.D. LT.  
2883+76 - 2886+16 - N.D. RT.  
2883+76 - 2886+16 - N.D. RT.  
2884+08 - 2886+08 - S.D. RT.

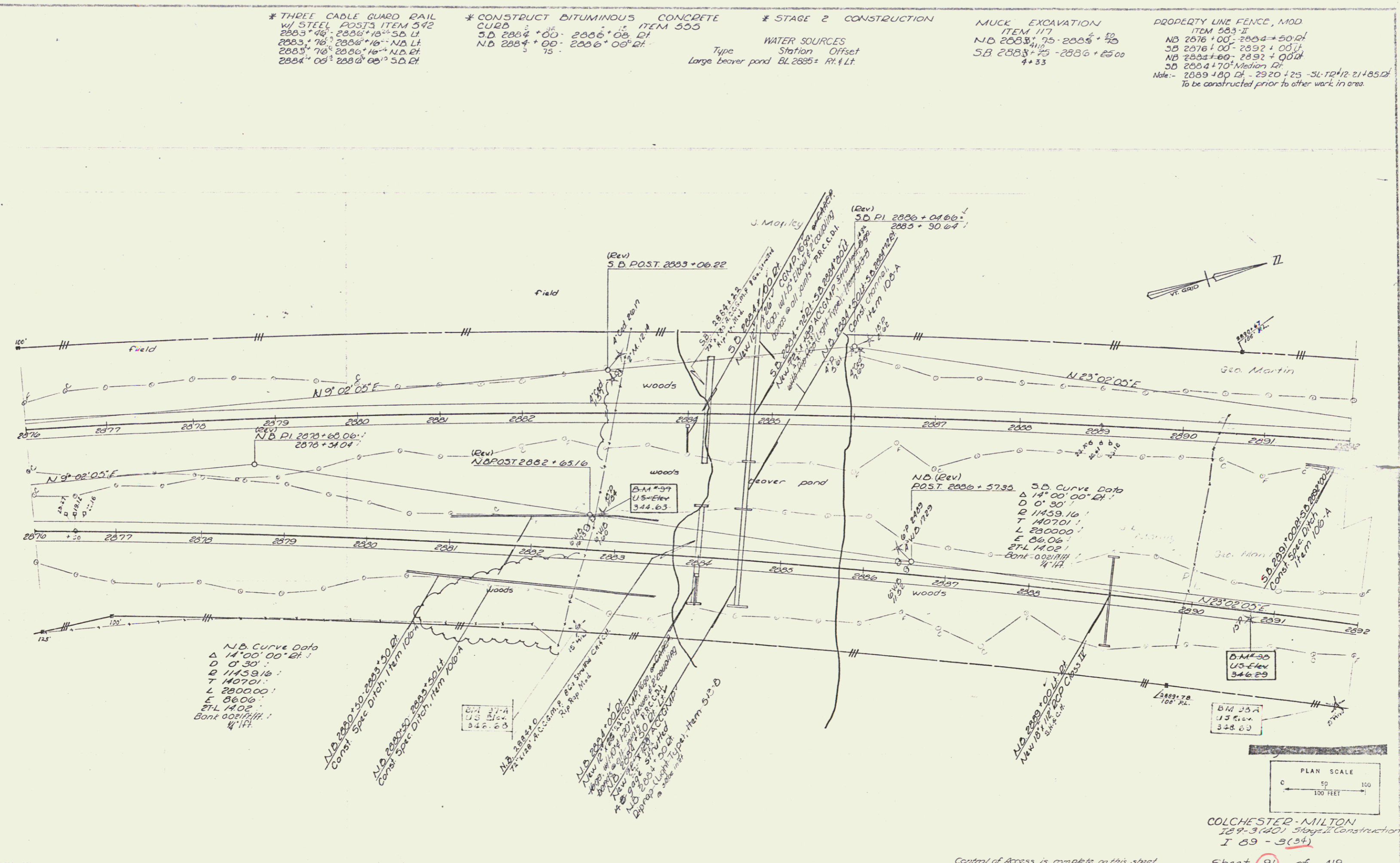
\* CONSTRUCT BITUMINOUS CONCRETE  
CURB ITEM 505  
S.D. 2884+00 - 2886+08 RT.  
N.D. 2884+00 - 2886+08 RT.

\* STAGE 2 CONSTRUCTION  
WATER SOURCES  
Type Station Offset  
Large bearer pond BL 2885+ RT 4 Lt.

MUCK EXCAVATION  
ITEM 117  
N.D. 2883+75 - 2885+75  
S.B. 2883+75 - 2886+25.00  
4+33

PROPERTY LINE FENCE, MOD  
ITEM 583-2  
NB 2876+00 - 2884+50.00  
SB 2876+00 - 2892+00.00  
NB 2884+60 - 2892+00.00  
S.D. 2884+70 - Median RT.  
Note: 2889+80 Lt. - 2920+25 - S.L. RT 12-21+85.00  
To be constructed prior to other work in area.

PLAN	DATE	BY
DATE	BY	BY
DATE	BY	BY
DATE	BY	BY



COLCHESTER - MILTON  
189-3(40) Stage II Construction  
I 89 - 3(94)  
Sheet 91 of 419  
Sheet 89 of 177 Sheets

89