

Muck Excavation
 2847+60 - 2845+55

Properly Line Fence w/
 Steel Posts, Mod, Item 563-II
 N.B. 2847+100 - 2861+00 Lt
 S.B. 2847+100 - 2861+100 Lt
 N.B. 2853+00 - 2861+00 Rt
 WATER SOURCES
 Type Station Offset
 Large beaver pond BL 2846 + 100' Lt - 200' Rt
 Dug spring BL 2850 3000' + Rt
 Dug well BL 2860 + 1800' + Lt

SUB-BASE OF SAND, ITEM 202
 NB 2850+30-2855+00
 NB & SB 2857+00-2861+00
 SB 2849+00-2853+00

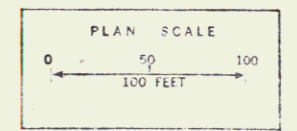
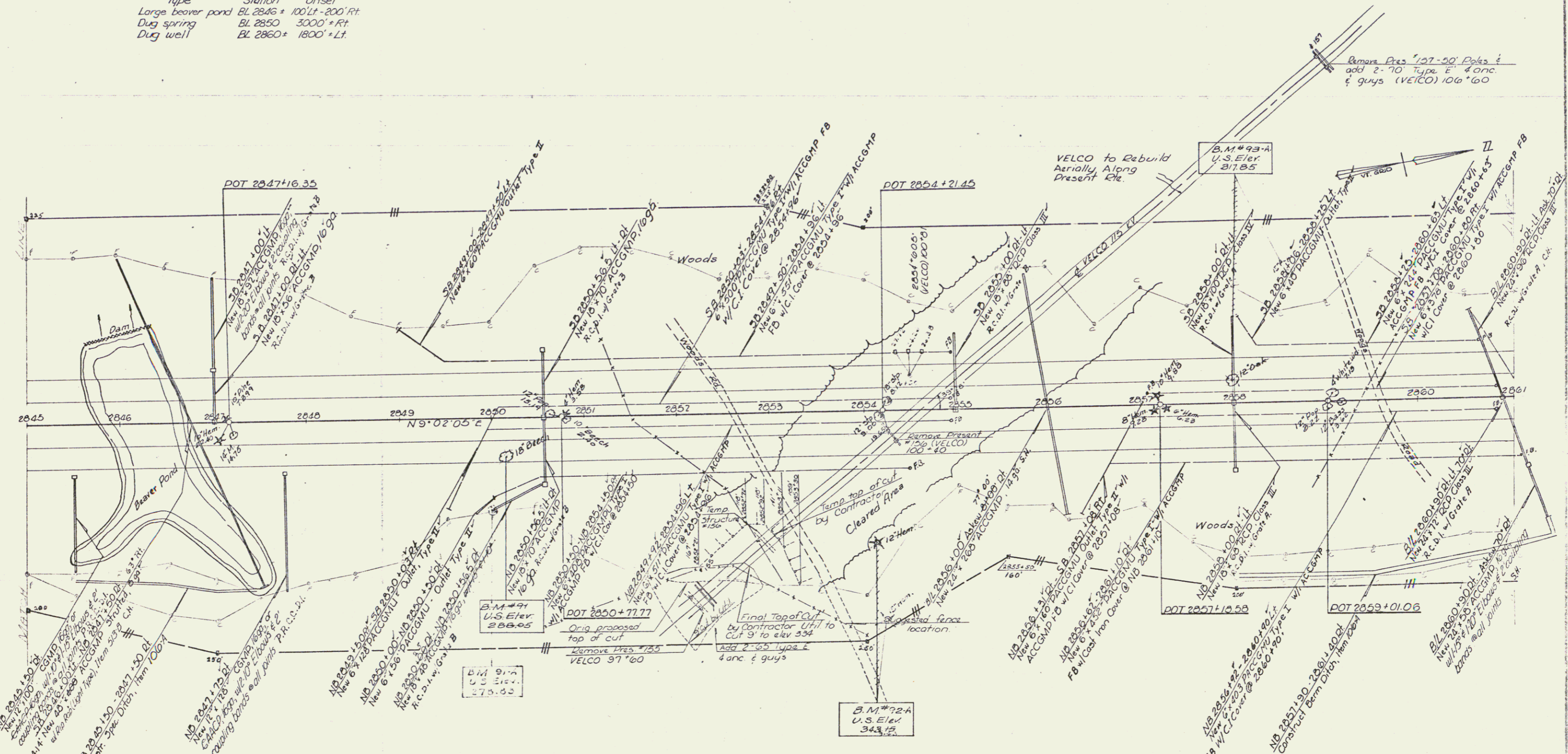
* JUTE MATTING, ITEM 623
 Med 2845+00 - 2861+00
 JD 2850+60 - 2854+50 Lt
 ND 2850+60 - 2854+50 Rt
 NB 2856+50 - 2861+00 Rt

* THREE CABLE GUARD RAIL
 w/ STEEL POSTS, ITEM 542
 2845+00 - 2849+25 Lt
 2845+00 - 2850+20 NB Rt

* CONSTRUCT BITUMINOUS CONCRETE
 CURB, ITEM 555
 NB 2845+00 - 2850+20 Rt
 SB 2845+00 - 2849+25 Lt

* STAGE 2 CONSTRUCTION

PLAN	REVISED	BY	DATE
NO.			
1			
2			
3			



STAGE II CONSTRUCTION
 Control of Access is complete on this street

COLCHESTER - MILTON
 I 89 - 3 (40)
 I 89 - 3 (34)
 Sheet 05 of 419
 Sheet 05 of 177 Sheets