

Property Line Fence w/ Steel Posts, Mod.
 N.B. 2829+00 - 2845+00 Rt.
 S.B. 2829+00 - 2845+00 Lt.

SUB-BASE OF SAND
 ITEM 202
 NB 2829+00-2832+15

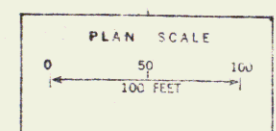
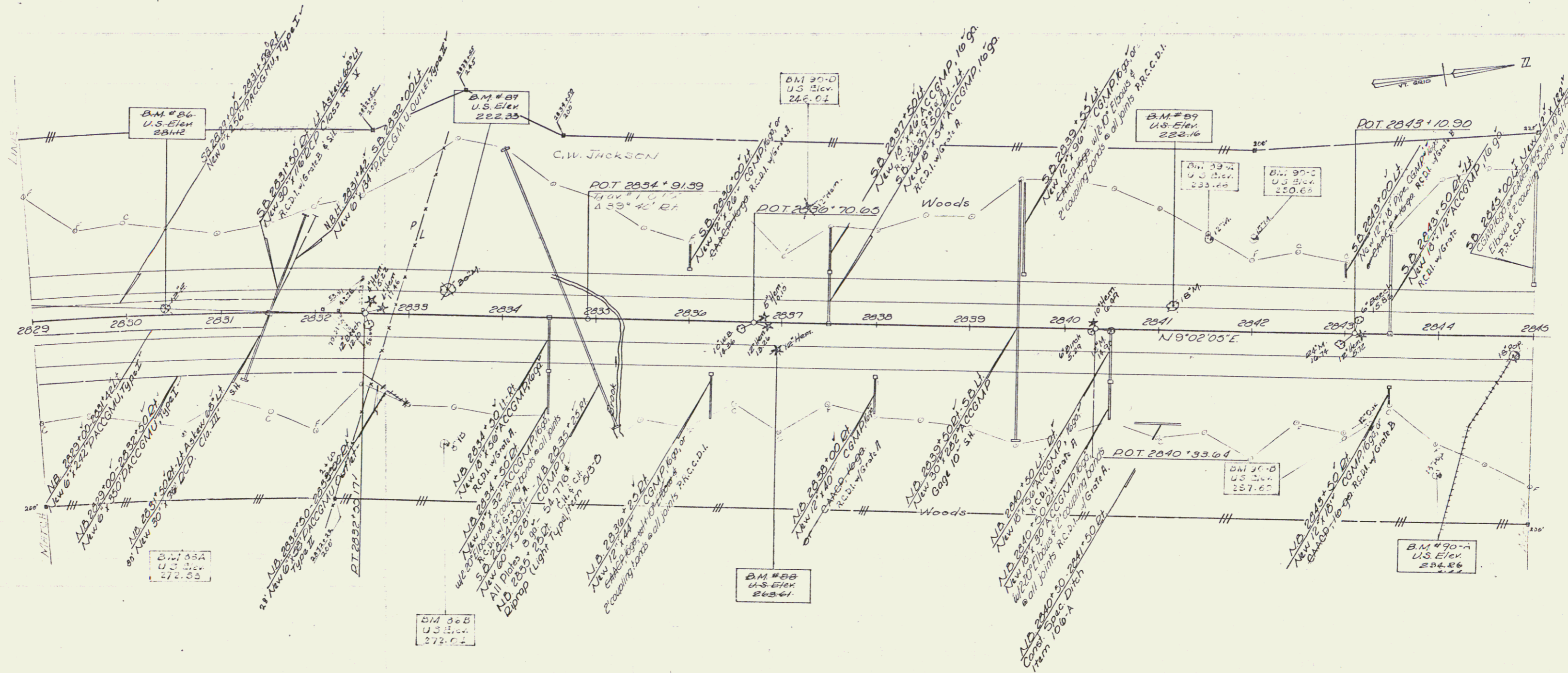
*JUTE MATTING
 ITEM 623
 Med. 2829+00-2834+50
 N.D. 2829+00-2832+00 Rt.
 N.D. 2840+30-2845+00

*THREE CABLE GUARD RAIL
 w/ STEEL POSTS, ITEM 542
 2832+00-2836+00 S.D. Lt.
 2832+00-2836+00 N.D. Rt.
 2837+41-2842+00 S.D. Lt.
 2838+00-2842+48 N.D. Rt.
 2843+46-2845+00 N.D. Rt.

*CONSTRUCT BITUMINOUS CONCRETE CURB
 ITEM 555
 N.D. 2832+00-2836+26 Rt.
 S.D. 2834+00-2836+00 Lt.
 N.D. 2838+00-2842+48 Rt.
 S.D. 2837+00-2842+00 Lt.
 N.D. 2843+00-2845+00 Rt.
 S.D. 2843+00-2845+00 Lt.

*STAGE 2 CONSTRUCTION

PLAN	DATE	BY
REVISION		
1. APPROVED		
2. REVISED		
3. REVISED		
4. REVISED		
5. REVISED		



STAGE II CONSTRUCTION

Control of Access is complete on this sheet.

COLCHESTER-MILTON
 I 89-5(40)
 I 89-3(34)
 Sheet 83 of 419
 Sheet 83 of 177 Sheets

84