

PLAN
 SURVEYED
 BY
 DATE
 NO.

Drilling & Blasting of Solid Rock
 2770+00 - 2771+00 ±

SUB-BASE OF SAND, ITEM 202
 NB 2769+75 - 2773+25
 SB 2768+00 - 2768+25

* JUTE MATTING, ITEM 623
 NB 2769+75 - 2773+25 RT
 SB 2769+00 - 2768+25 LT
 MED 2768+00 - 2771+50

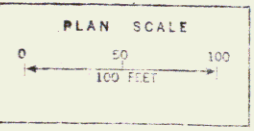
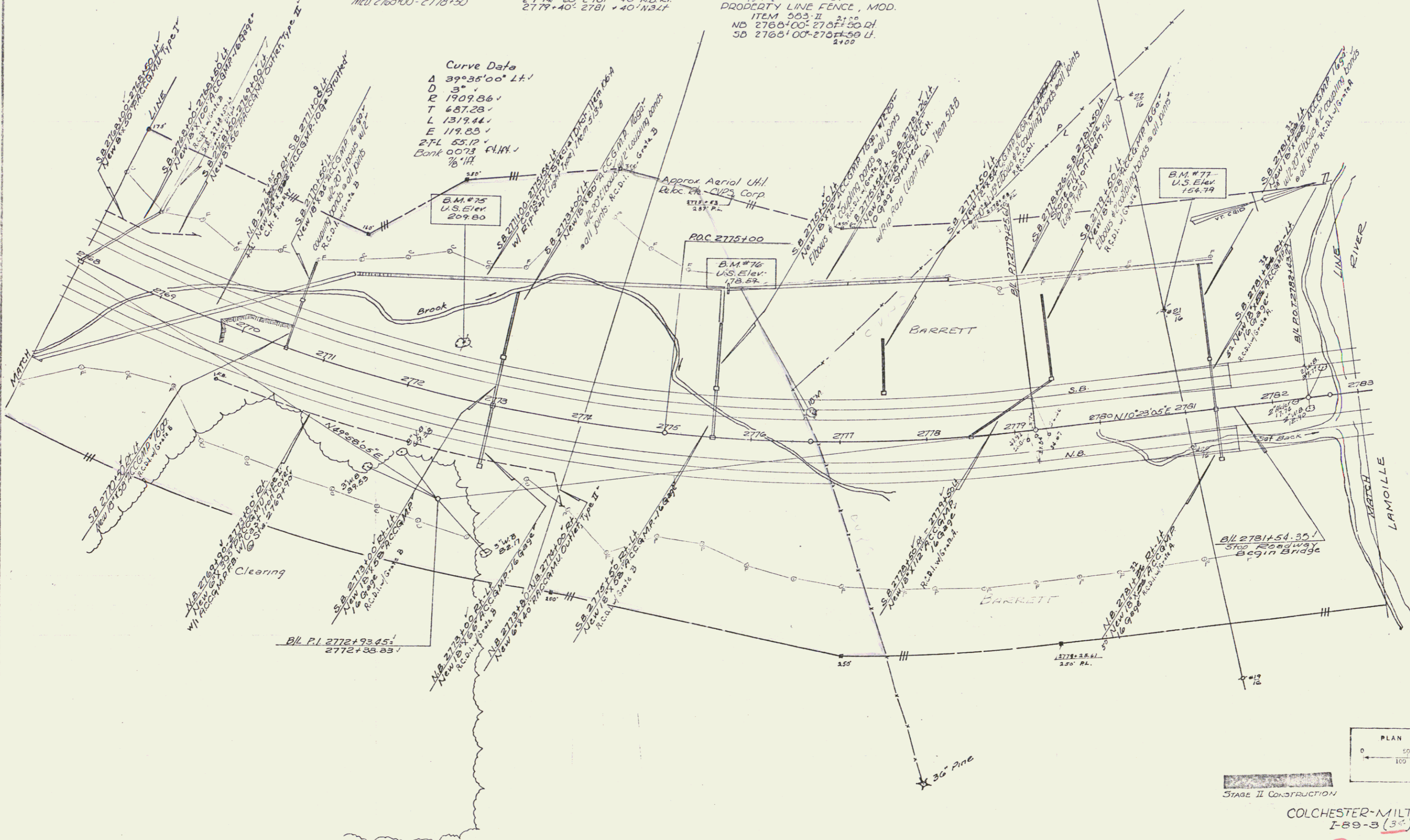
* THREE CABLE GUARD RAIL
 w/ STEEL POSTS, ITEM 542
 2768+00 - 2770+00 NB, RT
 2768+58 - 2781+40 NB, RT
 2774+25 - 2781+40 NB, RT
 2779+40 - 2781+40 NB, RT

* DITUMINOUS CONCRETE CURB
 ITEM 555
 2768+38 - 2781+40 S.D. LT
 2780+25 - 2781+40 NB, RT
 PROTECTIVE LINE FENCE, MOD.
 ITEM 503-II
 ND 2768+00 - 2768+50 RT
 SD 2768+00 - 2768+50 LT

* STANDARD STEEL BEAM
 GUARD RAIL w/ STEEL
 POSTS, ITEM 545A
 2781+40 SB RT - NBLT

* STAGE 2 CONSTRUCTION

Curve Data
 Δ 39°35'00" Lt.
 D 3"
 R 1909.86'
 T 687.28'
 L 1319.44'
 E 119.85'
 ZFL 65.12'
 Bank 0073 CLM
 1/8" H



STAGE II CONSTRUCTION

COLCHESTER-MILTON
 I-89-3 (34) I89-3(40)
 Sheet 70 of 413
 Sheet 75 of 177 Sheets

Control of Access is complete on this sheet.