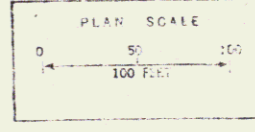
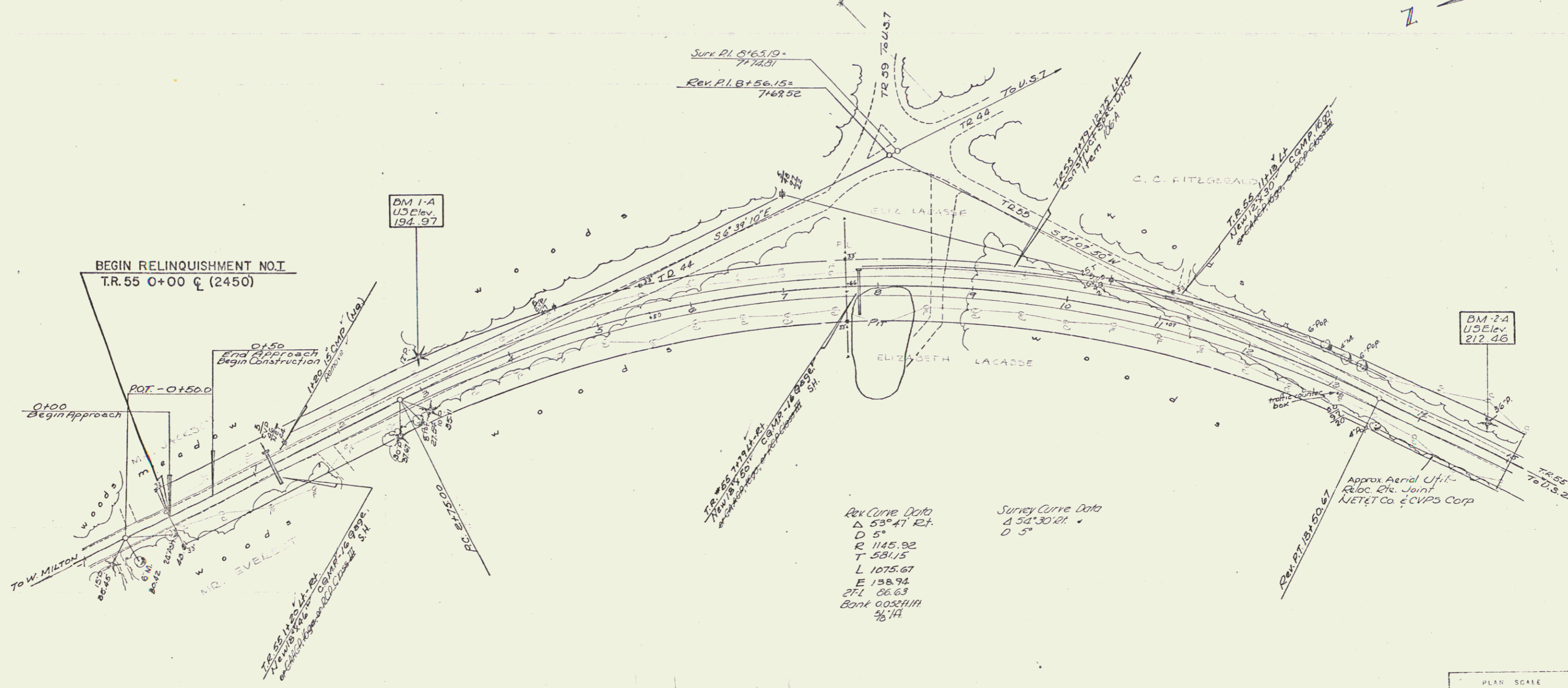
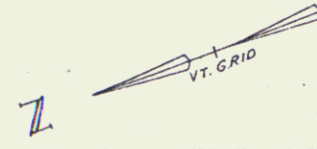


PLAN
 SURVEYED
 BY LAVALLEE
 ADJUSTED
 BY AUSTIN
 IN - CHECKED
 IN - FRASER
 DATE
 9-63
 1-63
 3-63

Construct Drives
 0+50 RT.
 11+13 LT.
 2+00 RT.

Wood Guide Posts @ 16' c/c, Item 347A
 0+25-1+05 RT.



Town Rd. 55 & 57
 COLCHESTER - MILTON

Town Road # 55 to be built in its entirety in Stage 1 Construction.

I 89 - 3 (34)
 Sheet 49 of 419

63