

THREE CABLE GUARD RAIL  
w/ STEEL POSTS ITEM 10  
NB 2956+00-2957+46.81

BITUMINOUS CONCRETE CURB  
ITEM 11  
NB 2956+00-2957+46.81

MUCK EXCAVATION  
2956+00-2956+75.10

PROJECT I 89-3(27) R.O.W.

2956+00-2956+46.81

(1.73')

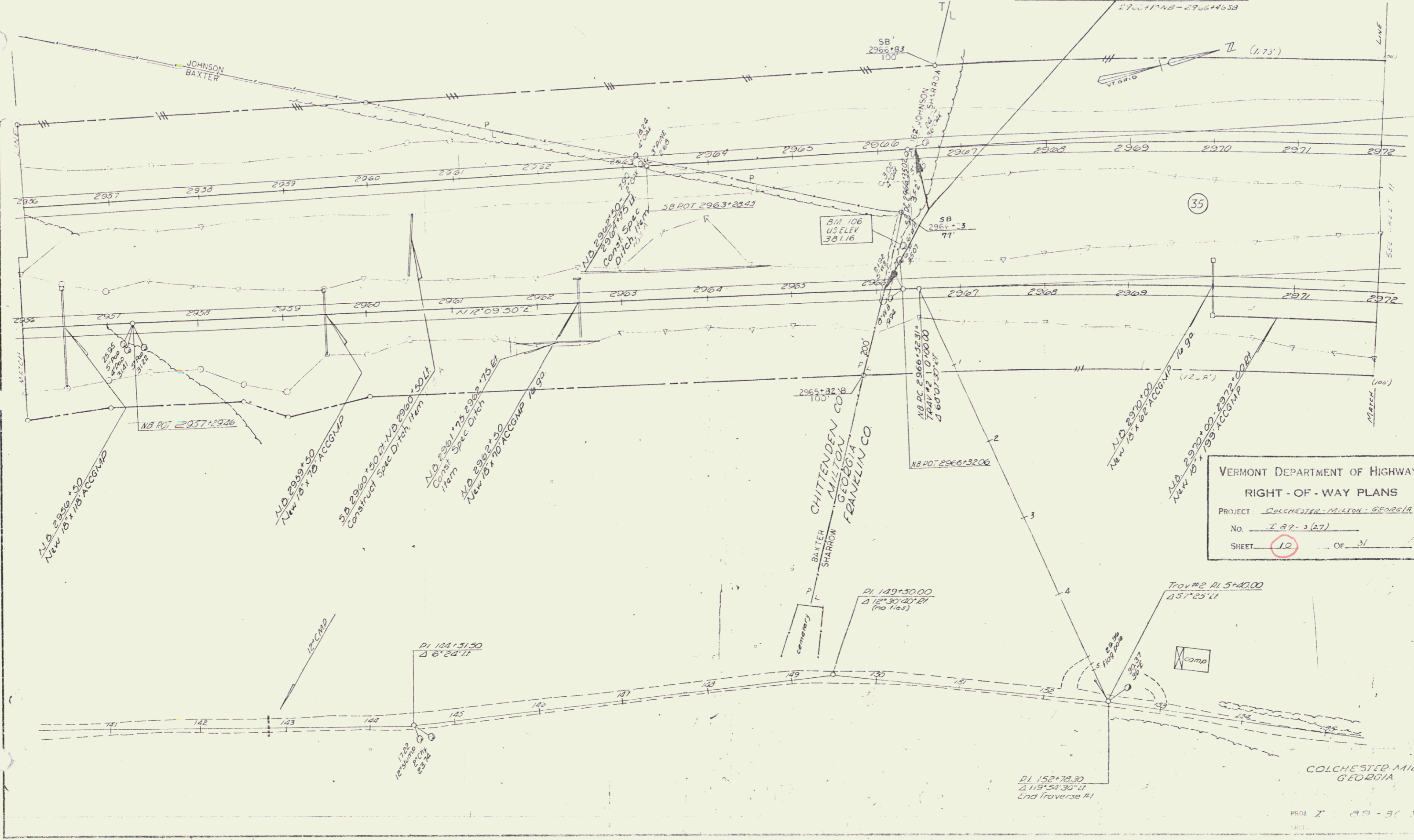
Line

SEZ

(12.8')

(100')

Match



VERMONT DEPARTMENT OF HIGHWAYS  
RIGHT-OF-WAY PLANS  
PROJECT: COLCHESTER-MILTON-GEORGIA  
No. I 89-3(27)  
SHEET 12 OF 31

COLCHESTER-MILTON  
GEORGIA

PROJ I 89-3(27)