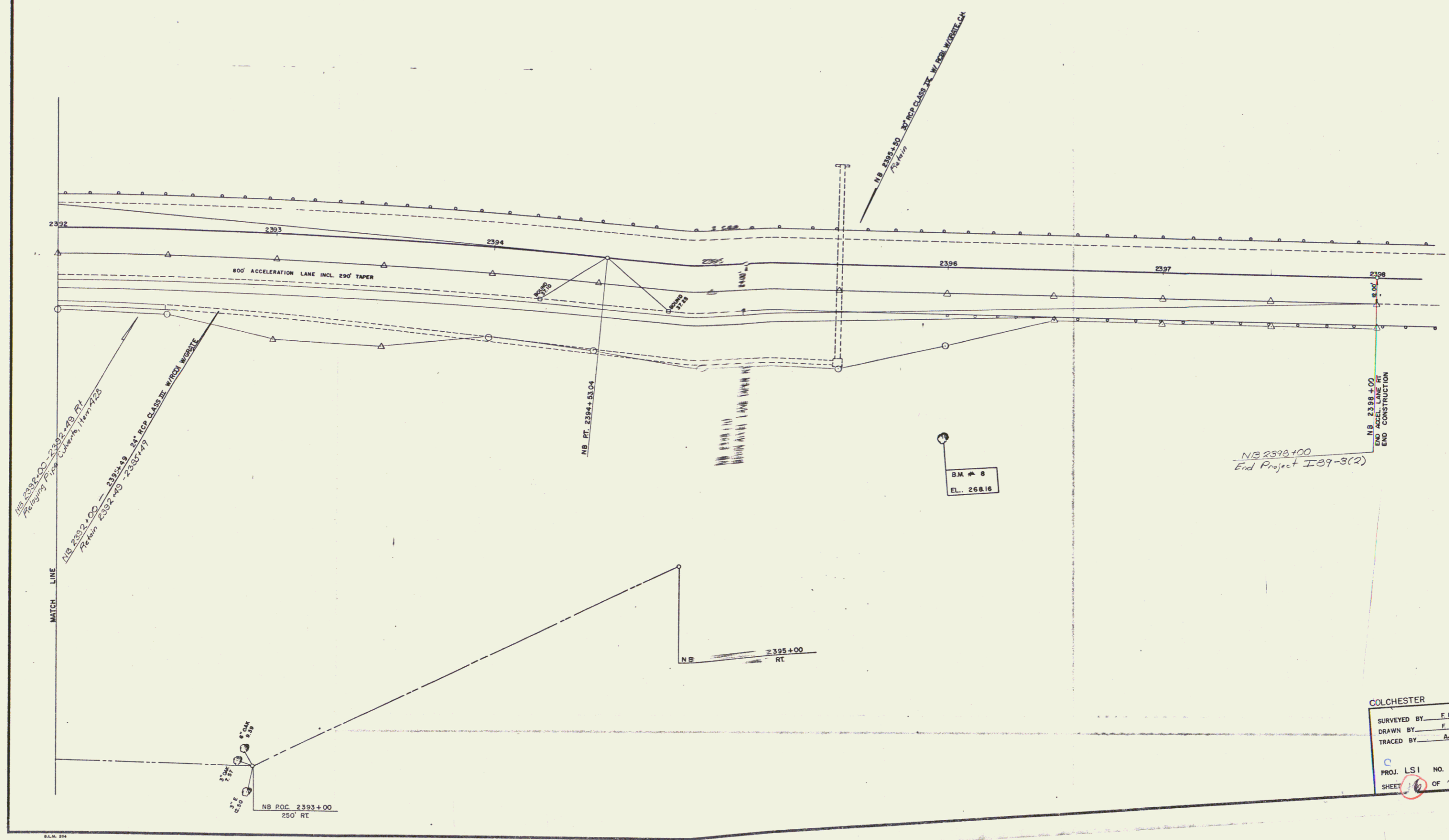


PROPERTY LINE FENCE
WITH STEEL POSTS, ITEM 383-II
NB 2392+00 - 2395+00 RT

REMOVING AND RESETTING
3 CABLE GUARD RAIL WITH STEEL POSTS
ITEM 348-B
NB 2396+00 - 2398+00 RT



COLCHESTER

| | | |
|-------------|------|-------------|
| SURVEYED BY | F.E. | DATE |
| DRAWN BY | F.E. | DATE |
| TRACED BY | AJA | DATE |
| PROJ. | LS1 | NO. 89-3(2) |
| SHEET | 10 | OF 70 |

10