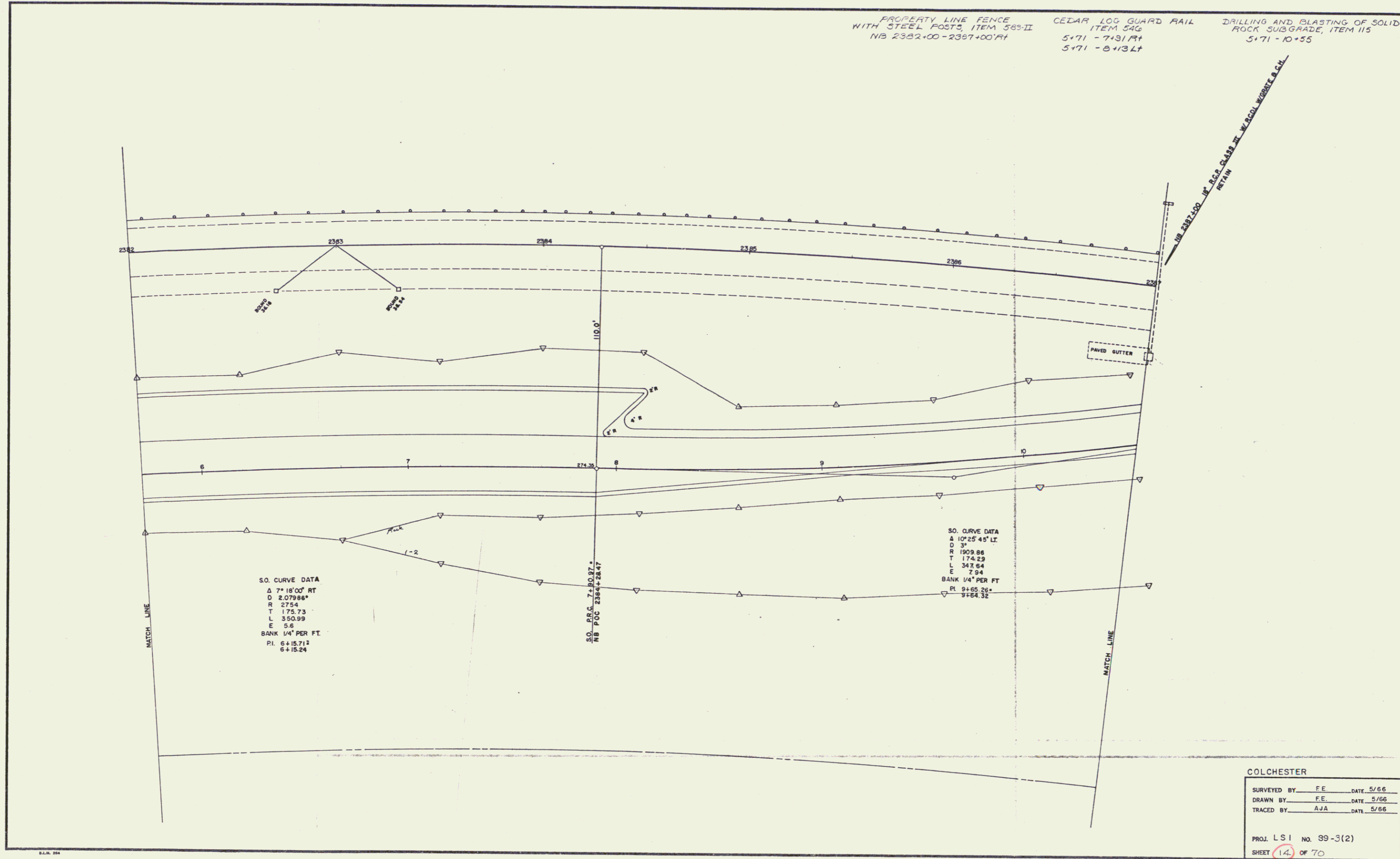


PROPERTY LINE FENCE  
WITH STEEL POSTS, ITEM 585-II  
NB 2382+00 - 2397+00/RT

CEDAR LOG GUARD RAIL  
ITEM 546  
5+71 - 7+31/RT  
5+71 - 6+13/LT

DRILLING AND BLASTING OF SOLID  
ROCK SUBGRADE, ITEM 115  
5+71 - 10+55

UP 2387+00 1/4" P.C. CLASS II W/200' WOODS & C.H.  
RETAIN



S.O. CURVE DATA  
Δ 7° 18' 00" RT  
D 2,079.86'  
R 2754  
T 175.73  
L 350.99  
E 55  
BANK 1/4" PER FT.  
PI 6+15.71  
6+15.24

S.O. P.C. T=110.07'  
NB POC 2384+28.47

S.O. CURVE DATA  
Δ 10° 25' 45" LT  
D 3'  
R 1909.86  
T 174.29  
L 347.04  
E 7.94  
BANK 1/4" PER FT.  
PI 9+65.28  
3+64.32

COLCHESTER

SURVEYED BY	F.E.	DATE	5/66
DRAWN BY	F.E.	DATE	5/66
TRACED BY	AJA	DATE	5/66

PROJ LSI No. 99-3(2)  
SHEET 14 OF 70