

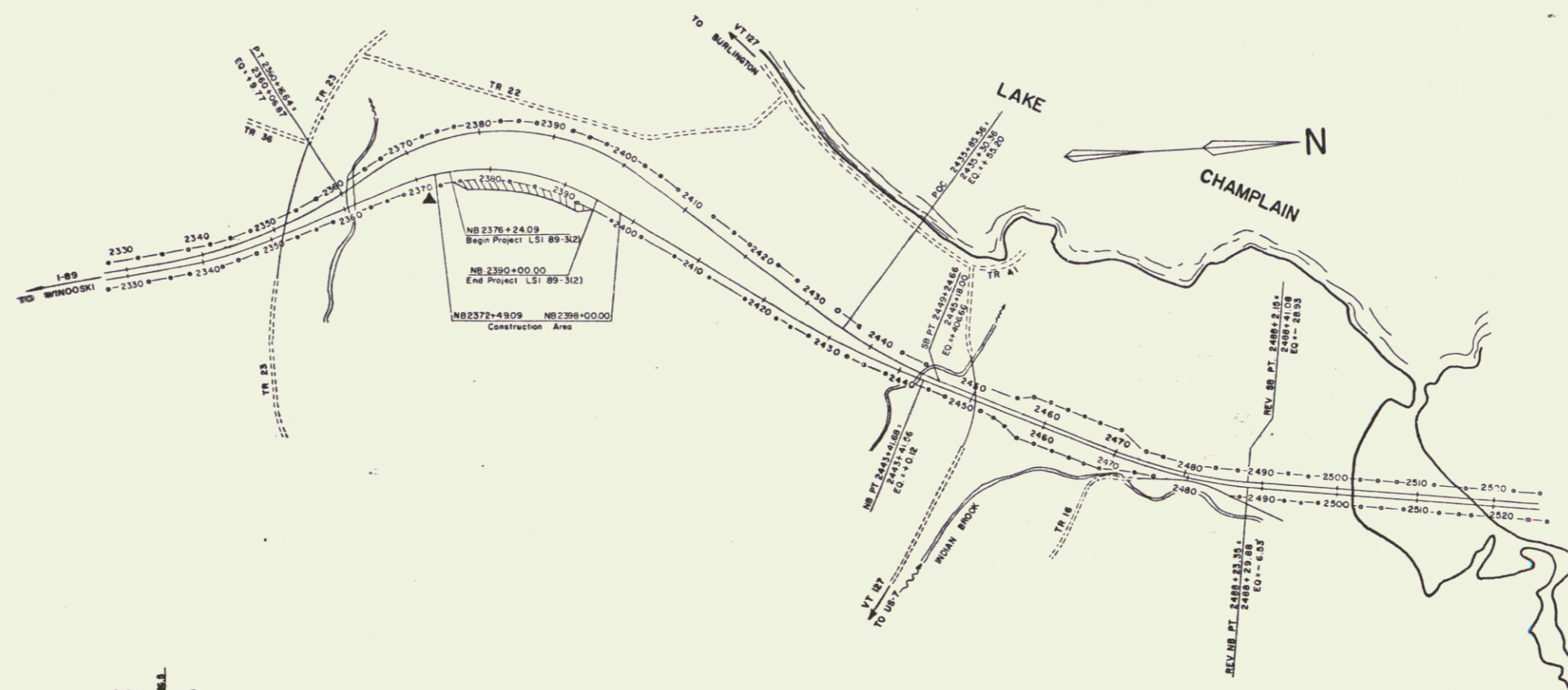
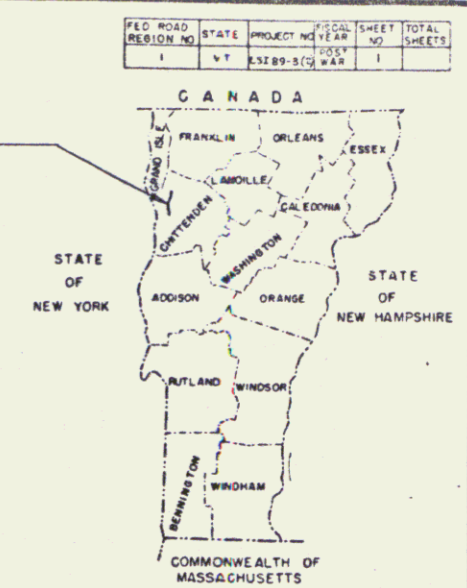
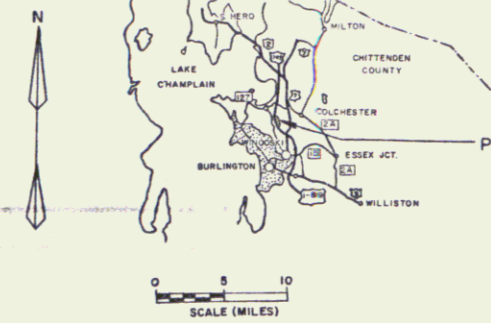
STATE OF VERMONT  
DEPARTMENT OF HIGHWAYS

PROPOSED IMPROVEMENT

TOWN OF COLCHESTER  
COUNTY OF CHITTENDEN  
PROJECT LSI 89-3 (2)

BEGINNING AT A POINT IN COLCHESTER 3.006 MILES NORTH OF THE WINOOSKI -  
COLCHESTER TOWN LINE AND EXTENDING NORTHERLY FOR A DISTANCE OF 0.261 MILES

LENGTH OF PROJECT 1375.91 FEET = 0.261 MILES



Construction Plans

RIGHT-OF-WAY DIVISION  
TOWN FILE  
PERPETUAL  
Town of I89  
(To Be Returned To R.O.W. Division)

GROUND ELEVATION	DATUM	LINE	FEDERAL AID CONSTRUCTION SIGN ▲
GRADE ELEVATION	RADW	LINE	
CURVE DATA			
DEFLECTION OF ANGLE	Δ		
DEGREE OF CURVE	D		
RADIUS OF CURVE	R		
TANGENT DISTANCE	T		
LENGTH OF CURVE	L		
EXTERNAL DISTANCE	E		
POINT OF INTERSECTION	PI		
POINT OF CURVE	PC		
POINT OF TANGENT	PT		
POINT ON TANGENT	POT		
POINT ON SUB-TANGENT	POST		

SCALES	
TITLE	1" = 100'
TYPICAL	1" = 100'
PLAN	1" = 100'
PROFILE HORIZONTAL	1" = 100'
PROFILE VERTICAL	1" = 10'
CROSS-SECTIONS	1" = 10'

THESE PLANS ARE SUBJECT TO SUCH REVISIONS AS MAY BE  
REQUIRED BY THE BUREAU OF PUBLIC ROADS OR THE COMMISSIONER  
OF HIGHWAYS.  
CONSTRUCTION IS TO BE CARRIED ON IN ACCORDANCE WITH  
THESE PLANS AND THE STANDARD SPECIFICATIONS FOR HIGHWAY  
AND BRIDGE CONSTRUCTION DATED APRIL, 1964, AS APPROVED  
BY THE BUREAU OF PUBLIC ROADS ON OCTOBER 12, 1964 INCLUDING  
ALL SUBSEQUENT APPROVED REVISIONS AND SUCH REVISED  
SPECIFICATIONS AND SPECIAL PROVISIONS AS ARE INCORPORATED  
IN THESE PLANS.

DEPARTMENT OF COMMERCE BUREAU OF PUBLIC ROADS	
APPROVED	DATE
DIVISION ENGINEER	
PROJECT L.S.I. NO. 89-3(2)	
SHEET 1 OF SHEETS	

APPROVED <i>E. H. Wickham</i> ASST. CHIEF ENGINEER DATE 6/2/66	APPROVED <i>R. L. Smith</i> CONSTRUCTION ENGINEER DATE 5/23/66	APPROVED <i>R. L. Smith</i> LANDSCAPE ENGINEER DATE MAY 23, 1966	APPROVED <i>R. L. Smith</i> DISTRICT ENGINEER DATE 6/1/66	APPROVED <i>R. M. Lane</i> HIGHWAY ENGINEER DATE MAY 23, 1966	APPROVED <i>R. L. Smith</i> CHIEF ENGINEER DATE 6/1/66
--	--	--	---	---	--