

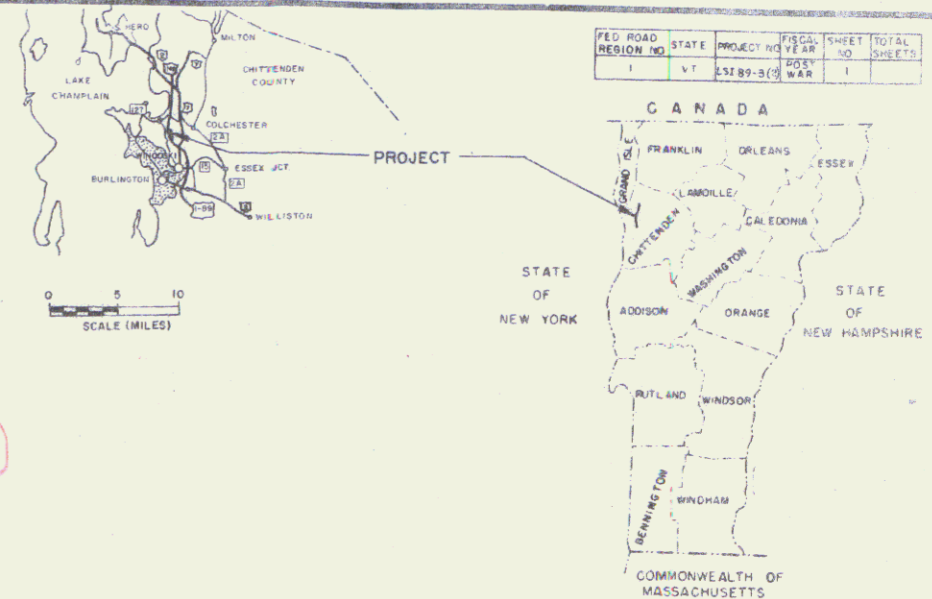
- INDEX OF SHEETS**
- SHEET NO. 1 TITLE PAGE  
 2. CONSTRUCTION WARNING SIGNS  
 3. E-31 FEDERAL AID CONSTRUCTION IDENTIFICATION SIGNS  
 4. J-3 MINIMUM PLANTING DISTANCES  
 5. J-5 DRY RUBBLE MASONRY TREE WELLS, ITEM #12.  
 BRACING OF TREES, PICKING TABLE  
 6. QUANTITY SHEET  
 7. LAYOUT SHEETS

STATE OF VERMONT  
 DEPARTMENT OF HIGHWAYS  
**PROPOSED IMPROVEMENT**

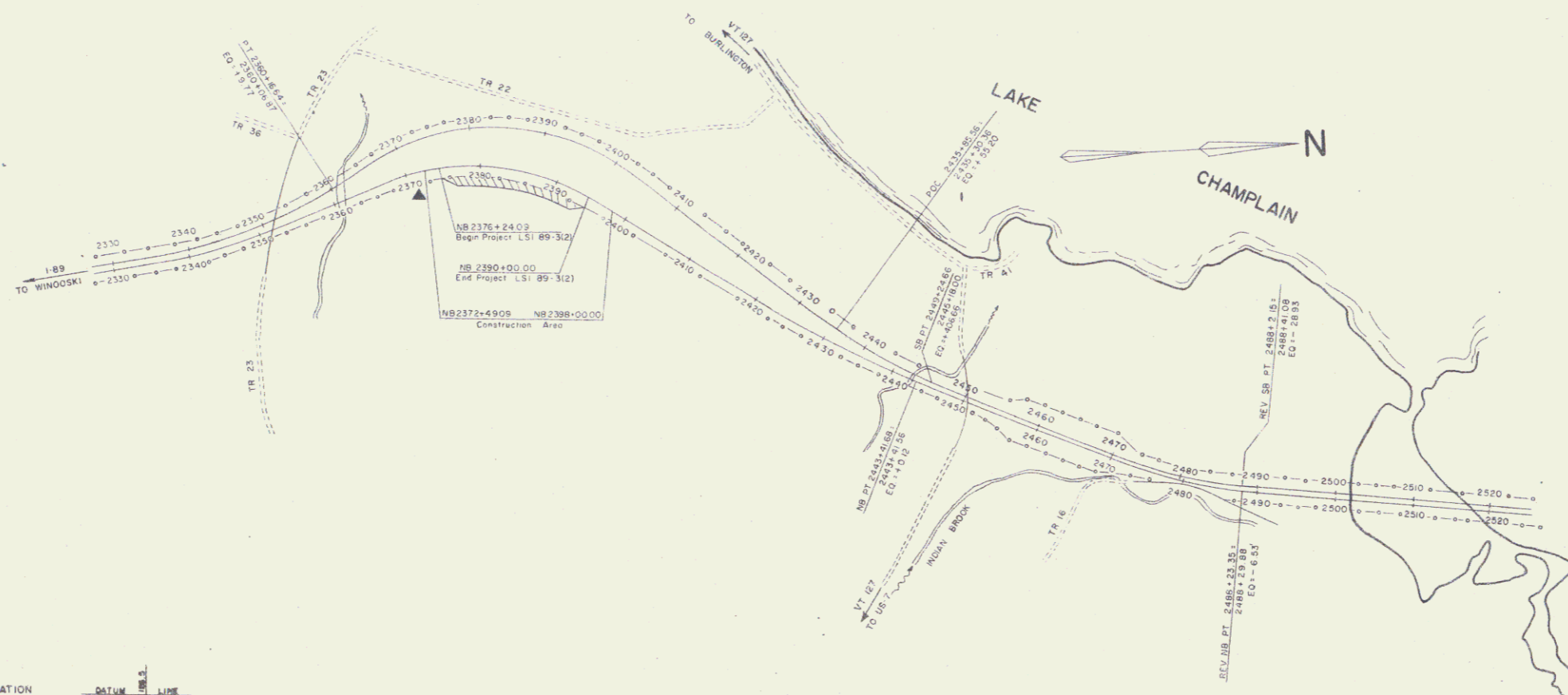
**TOWN OF COLCHESTER**  
 COUNTY OF CHITTENDEN  
 PROJECT LSI 89-3 (2) Pin # 99R026

BEGINNING AT A POINT IN COLCHESTER 3.006 MILES NORTH OF THE WINOOSKI -  
 COLCHESTER TOWN LINE AND EXTENDING NORTHERLY FOR A DISTANCE OF 0.261 MILES

LENGTH OF PROJECT 1375.91 FEET = 0.261 MILES



M



- CONVENTIONAL SIGNS**
- COUNTY LINE
  - TOWN LINE
  - FENCE LINE
  - STONE WALL
  - UNFENCED PROPERTY
  - GUARD RAIL
  - TRAVELED WAY
  - RAILROAD
  - RETAINING WALL
  - CENTER LINE
  - SURVEY LINE
  - CULVERT
  - DROP INLET
  - TROLLEY POLE
  - POWER POLE
  - TELEPHONE POLE
  - TREES
  - HEDGE

- CURVE DATA**
- DEFLECTION OF ANGLE . . . . . Δ
  - DEGREE OF CURVE . . . . . D
  - RADIUS OF CURVE . . . . . R
  - TANGENT DISTANCE . . . . . T
  - LENGTH OF CURVE . . . . . L
  - EXTERNAL DISTANCE . . . . . E
  - POINT OF INTERSECTION . . . . . P.I.
  - POINT OF CURVE . . . . . P.C.
  - POINT OF TANGENT . . . . . P.T.
  - POINT ON TANGENT . . . . . POT
  - POINT ON CURVE . . . . . POC
  - POINT ON BUS-TANGENT . . . . . POST

- SCALES**
- TITLE . . . . . 1" = 1'
  - TYPICAL . . . . . 1" = 1'
  - PLAN . . . . . 1" = 1'
  - PROFILE . . . . . 1" = 1'
  - CROSS-SECTIONS . . . . . 1" = 1'

THESE PLANS ARE SUBJECT TO SUCH REVISIONS AS MAY BE REQUIRED BY THE BUREAU OF PUBLIC ROADS OR THE COMMISSIONER OF HIGHWAYS. CONSTRUCTION IS TO BE CARRIED ON IN ACCORDANCE WITH THESE PLANS AND THE STANDARD SPECIFICATIONS FOR HIGHWAY AND BRIDGE CONSTRUCTION DATED APRIL, 1964, AS APPROVED BY THE BUREAU OF PUBLIC ROADS ON OCTOBER 12, 1964 INCLUDING ALL SUBSEQUENT APPROVED REVISIONS AND SUCH REVISED SPECIFICATIONS AND SPECIAL PROVISIONS AS ARE INCORPORATED IN THESE PLANS.

DEPARTMENT OF COMMERCE  
 BUREAU OF PUBLIC ROADS  
**MP 93.91-94.17**

APPROVED \_\_\_\_\_  
 DIVISION ENGINEER DATE \_\_\_\_\_

PROJECT L.S.I. NO. 89-3(2)  
 SHEET 1 OF SHEETS

APPROVED <i>E.H. Stebbins</i> DIST. ENGR. DATE 6/2/66	APPROVED _____ CONSTRUCTION ENGINEER DATE _____	APPROVED <i>W. J. [unclear]</i> SUPERVISING ENGINEER DATE May 23, 1966	APPROVED <i>W. J. [unclear]</i> DISTRICT ENGINEER DATE 6/1/66	APPROVED <i>W. J. [unclear]</i> ENGINEER DATE May 23, 1966	APPROVED <i>R.W. [unclear]</i> CHIEF ENGINEER DATE 6/2/66
--	--	---	--	---	--