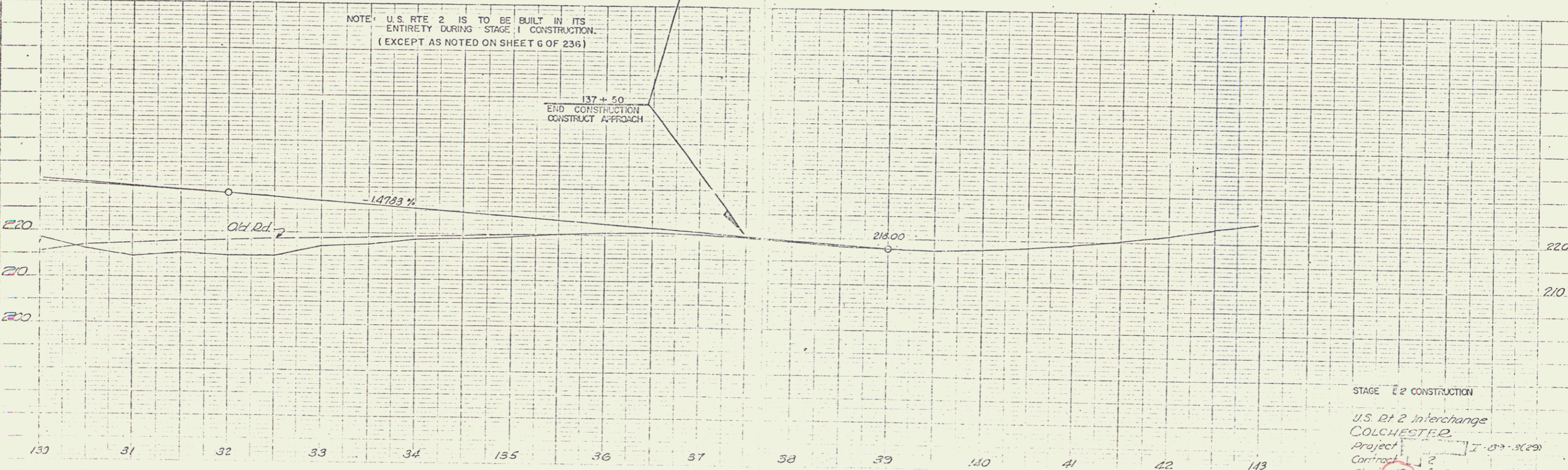
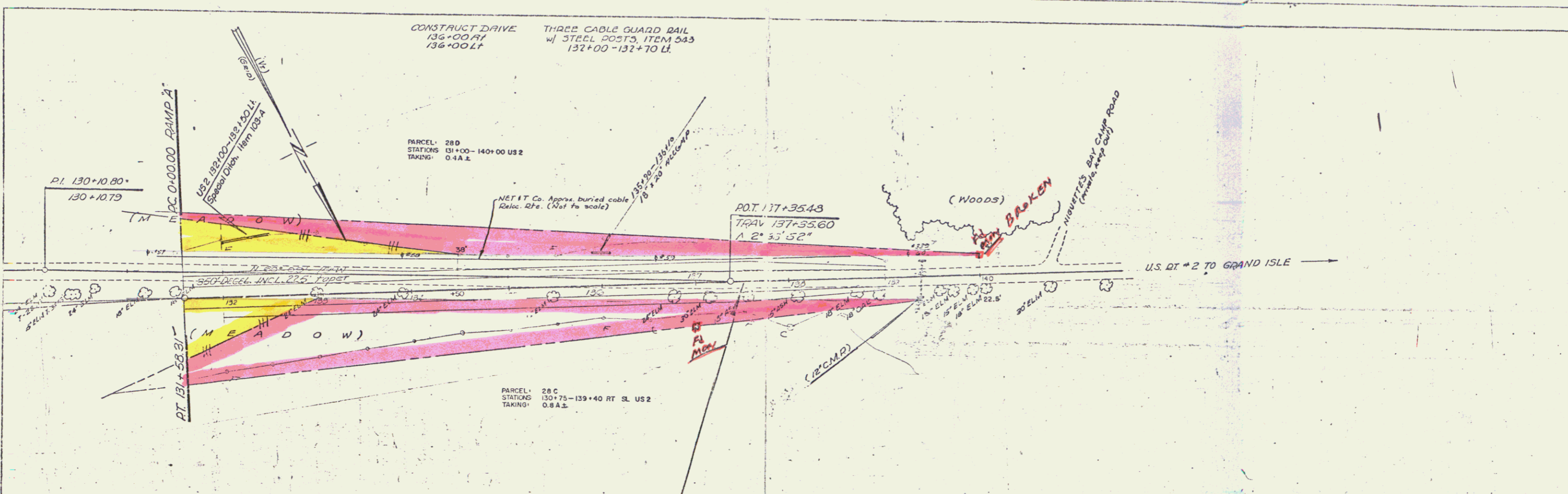


229 OCT 1974



NOTE: U.S. RTE 2 IS TO BE BUILT IN ITS ENTIRETY DURING STAGE I CONSTRUCTION. (EXCEPT AS NOTED ON SHEET G OF 236)

STAGE 2 CONSTRUCTION  
 U.S. RT 2 Interchange  
 COLCHESTER  
 Project I-89-3029  
 Contract 2  
 Sheet 43 of 236  
 AUG 7 1974  
 19

PLAN  
 Scale  
 1" = 40'

Profile  
 Scale  
 1" = 40'