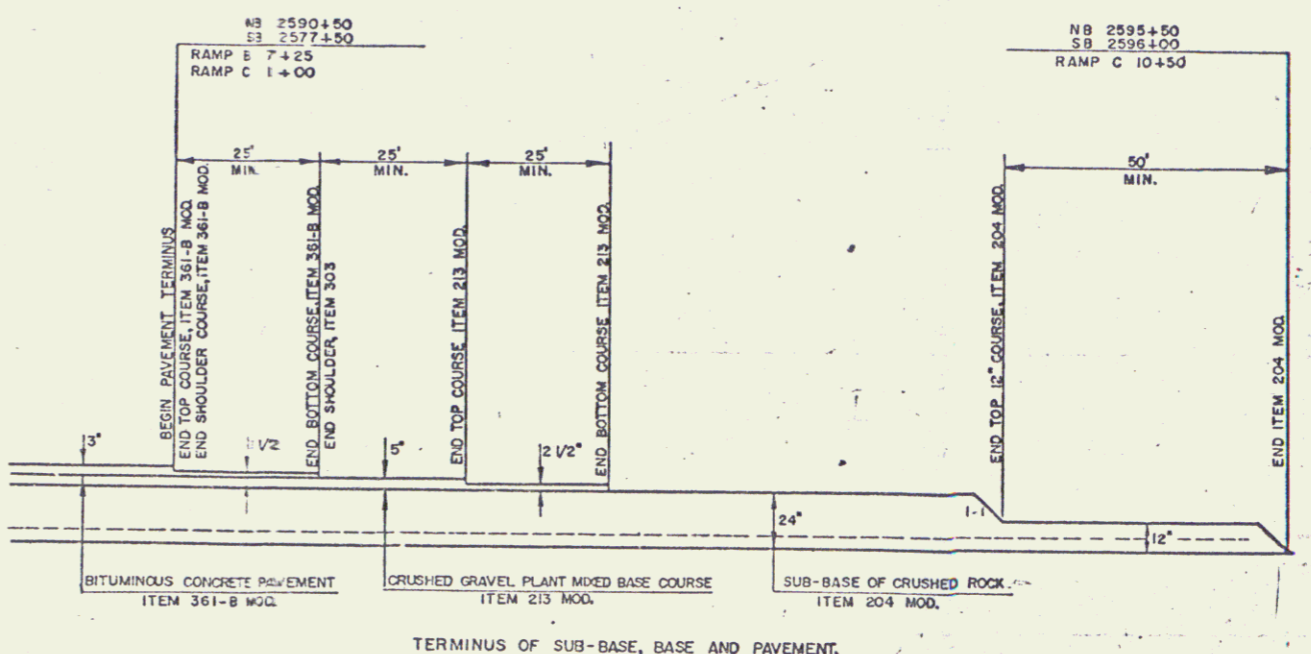
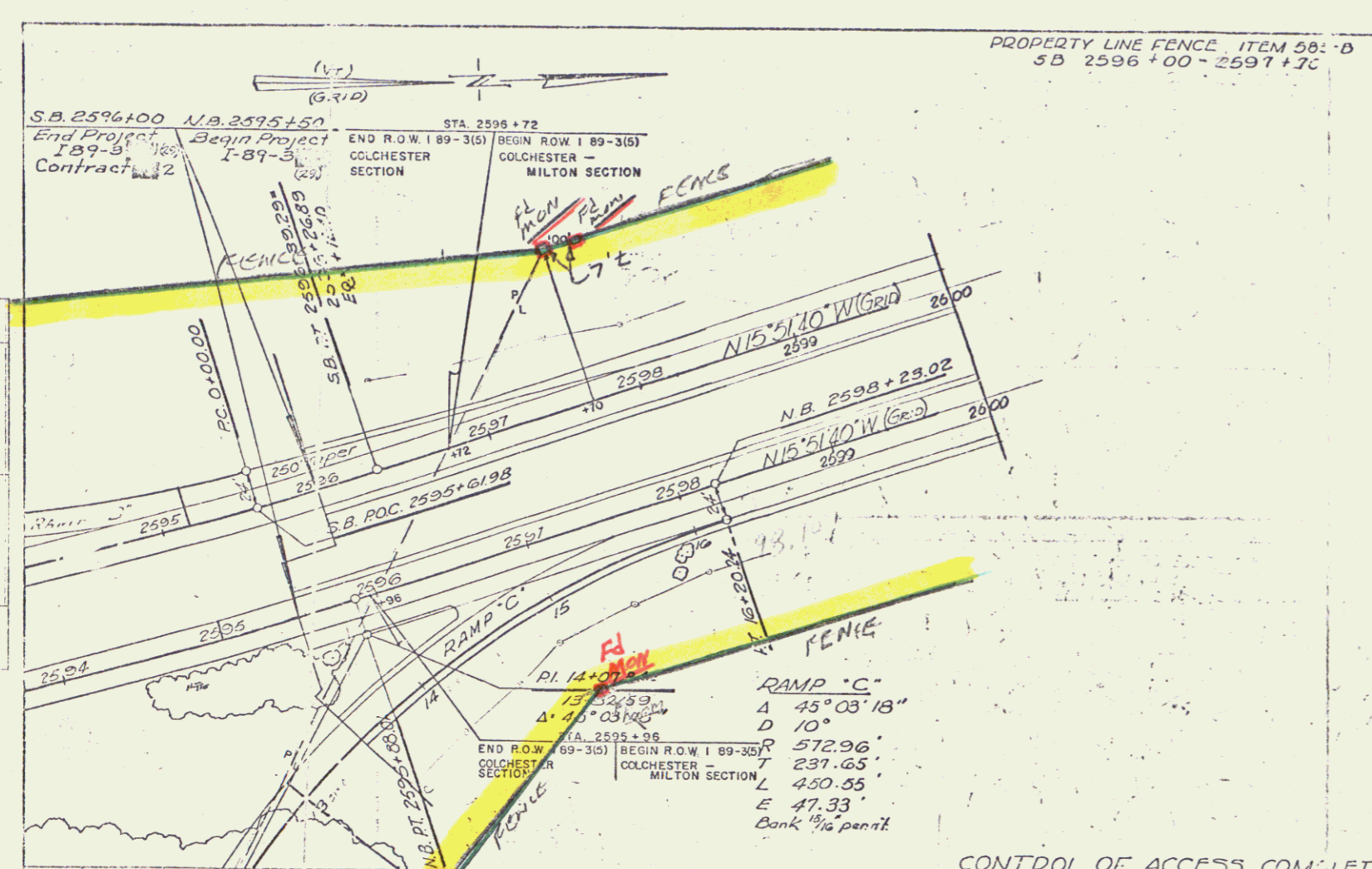
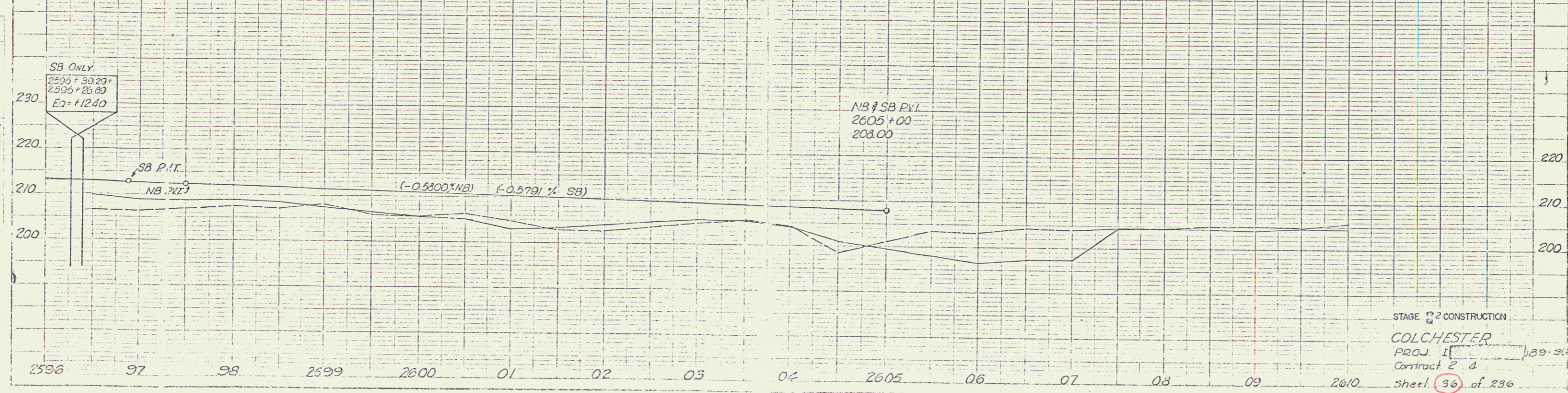


29 OCT. 1974



CONTROL OF ACCESS COMPLETE ON THIS SHEET.

STAGE 2 FINISHED GRADES SHOWN.
STAGE 1 SUBGRADE ELEVATION 2.67 FEET
(2 FT. 8 INCHES) BELOW.



STAGE 2 CONSTRUCTION
COLCHESTER
PROJ. 1 89-3(29)
Contract 2 &
Sheet 36 of 236
AUG 7 1974
14