

CONTROL OF ACCESS
COMPLETE ON THIS SHEET
EXCEPT SB STA. 2595+50 LT.
AND NB STA. 2588+00 RT.

* STANDARD STEEL DEAM GUARD RAIL
w/ STEEL POSTS, ITEM 547-A,
NB 2583+50 - 2586+50 RT.
SB 2586+70 - 2587+70 LT.

DRILLING & BLASTING of SOLID ROCK SUBGRADE,
ITEM 114, 1500
Ramp 'C' 4+50 - 10+50
Ramp 'D' 4+50 - 10+50
NB 2591+50 - 2595+50
SB 2595+50 - 2599+50

PARCEL 28 A,B,C,D
GRANTOR 35500 W. & HALLIE B ANDERSON
STATIONS 2575+00 NB - 2597+00 SB
TAKING 2582
REMAINDER 74.6A
RIGHTS

DRAINAGE - STA 2582+00 RT. NB,
31+50 RT. US 2
TITLE TAKEN CO. 10/25/62
REG. REC. COCHESTER BR 12, PG 339-379 11/3/62

PROPERTY LINE FENCE, ITEM 545-B
Ramp 'A' 8+00 - 0+00
U.S. Rte. 2 124+50 - 125+50
Ramp 'B' 0+00 - 7+50
NB 2579+30 - 2584+55 - 125+35 RT.
SB 2595+50 - 2596+00 - 131+00 RT.
80+00
Ramp 'B' 7+50 - 15+70 - 2547+70 SB LT.

RAMP 'A' CURVE DATA
Δ 59° 53'
R 230.00'
T 132.78'
L 240.84'
E 95.58'
Bk 1 per ft.

GRANITE SLOPE EDGING, ITEM 556-A
* Ramp 'A' 0+92 - 1+40 - 1+40 - 1+40
* Ramp 'D' 3+05 - 2+55 Exit Nose Lt.
1+25 - 7+00 Rt.
* NB 2589+25 - 2590+24 Rt.
* SB 2593+02 - 2593+32 Lt.
* Spur 'A' 1+19 - 1+56 - 1+56
* U.S. Rte. 2 124+50 - 125+40 - 121 (Stage 1)
* U.S. Rte. 2 120+50 - 130+62 Lt.
Not Part of This Project
U.S. Rte. 2 120+44 Rt.

PLANK GUARD RAIL w/ EQUIVALENT
TREATMENT Item 544A
SD 2586+00 Lt.

THREE RAIL GUARD RAIL w/ STEEL POST, ITEM 543
* Ramp 'A' 0+00 - 1+76 Rt.
* Spur 'A' 1+15 - 3+52 Lt. 18
U.S. Rte. 2
124+50 - 125+25 Lt.
124+50 - 125+43 Rt.
127+08 - 129+43 Lt. 18
127+08 - 129+43 Rt. 18
131+50 - 132+00 Lt.
* Ramp 'B' 7+50 - 7+90

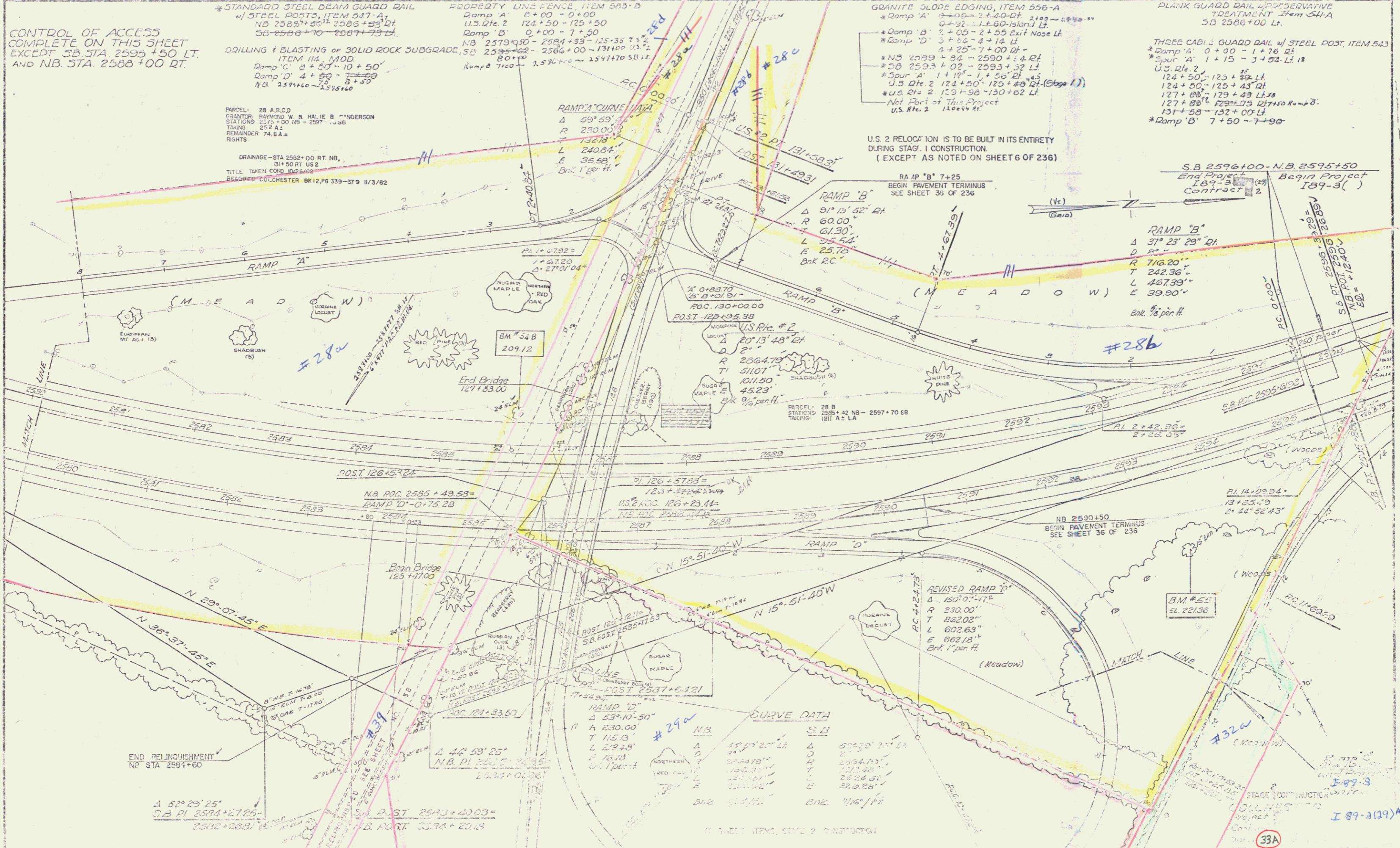
U.S. 2 RELOCATION IS TO BE BUILT IN ITS ENTIRETY
DURING STAGE 1 CONSTRUCTION.
(EXCEPT AS NOTED ON SHEET 6 OF 236)

RA AP "B" 7+25
BEGIN PAVEMENT TERMINUS
SEE SHEET 36 OF 236

SB 2596+00 - NB 2595+50
End Project 189-3
Begin Project 189-3
Contract 2

RAMP "B"
Δ 91° 15' 52" Rt.
R 60.00'
T 61.50'
L 25.70'
E 25.70'
Bk RC

RAMP "B"
Δ 57° 23' 29" Rt.
R 716.20'
T 242.36'
L 467.39'
E 39.90'
Bk 7/8 per ft.



AUG 7 1974

13