

CONSTRUCT DRIVES	
STA 4+40 LT	✓
STA 4+70 RT	✓
STA 5+35 RT	✓
STA 6+01 RT	✓
STA 6+55 RT	✓
STA 7+30 RT	✓
STA 8+23 RT	✓
STA 9+07 RT	✓
STA 10+51 LT	✓

GRANITE CURB ITEM 556-B	
STA 4+63 TO 10+31 LT	✓
STA 10+71 TO 11+85 LT	✓
STA 4+15 TO 4+50 RT	✓
STA 4+90 TO 5+15 RT	✓
STA 5+55 TO 5+81 RT	✓
STA 6+21 TO 6+35 RT	✓
STA 6+75 TO 7+10 RT	✓
STA 7+50 TO 8+03 RT	✓
STA 8+43 TO 8+87 RT	✓
STA 9+27 TO 11+85 RT	✓

PAVED DITCH ITEM 361-B	
STA 5+52 TO 5+77 LC	✓
STA 11+17 TO 11+42 LC	✓

DEMOLITION & REMOVAL OF BUILDINGS (SIGN BASE) ITEM 586	
NO. 3 STA 5+65 LT. RTE. 2 & 7	✓

EXCAVATION & REMOVAL OF EXISTING CEMENT CONC. PAVEMENT ITEM 101B
4+15 TO 11+85

PARCEL GRANTOR STATIONS TAKING REMAINDER RIGHTS
911A.B LEONARD J. & GLAUNDE M. BISSONNETTE
SLOPE 4+15-4+90 SL (1400 SQ FT ±)
4+15-10+50 SL (0.2A ±)
4 ROD R.O.W. (ALL RIGHT, TITLE, & INTEREST IN)

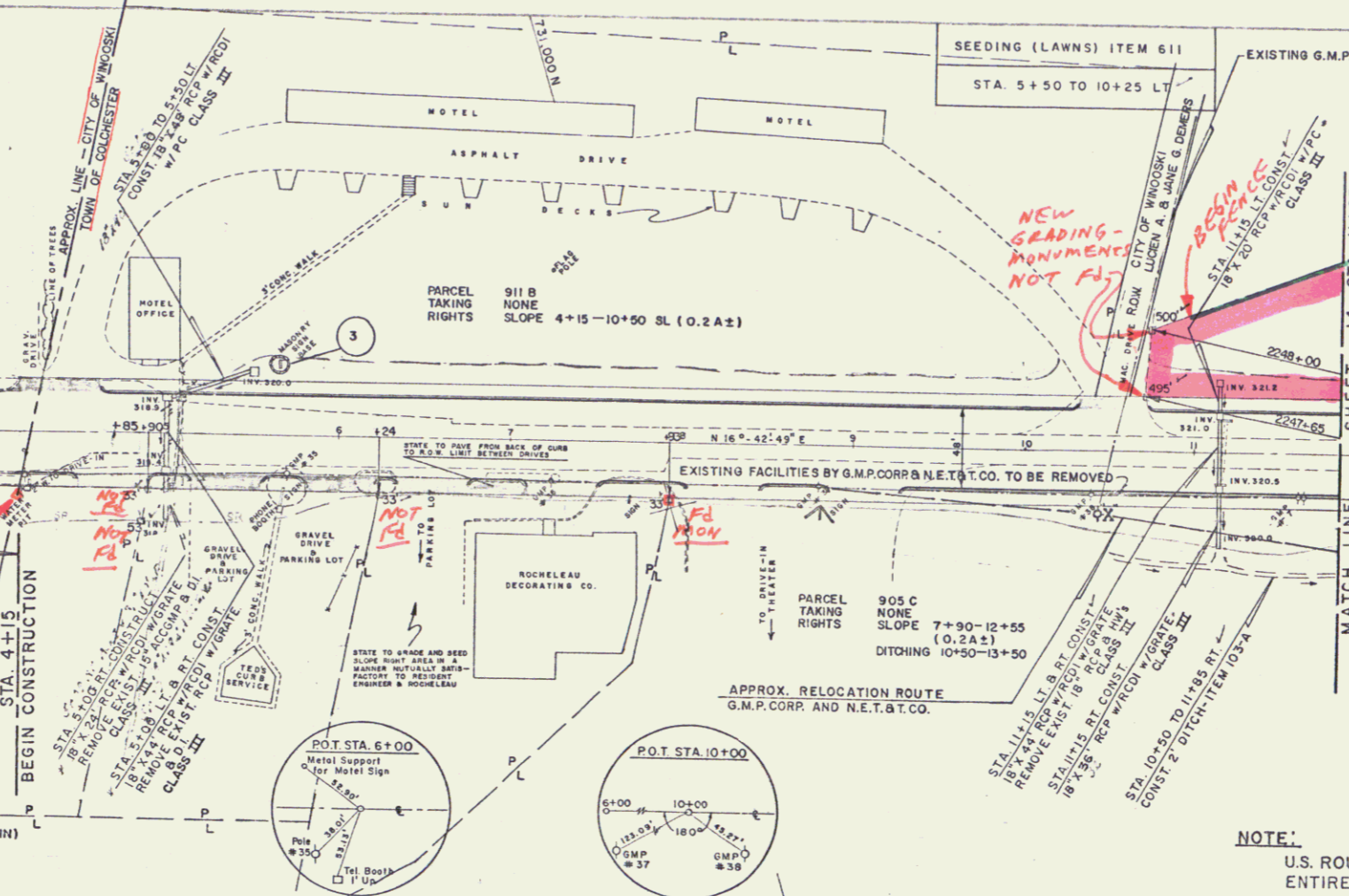
TITLE TAKEN: COND 5/13/61
RECORDED: COLCHESTER-BK. II-PG. 176-5/13/61

PARCEL GRANTOR STATIONS TAKING REMAINDER RIGHTS
911A THEODORE J. & GERTRUDE E. NIQUETTE
SLOPE 4+15-4-90 SL (1400 SQ FT ±)
4 ROD R.O.W. (ALL RIGHT, TITLE, & INTEREST IN)

TITLE TAKEN: COND 5/13/61
RECORDED: COLCHESTER-BK. II-PG. 176-5/13/61

PARCEL GRANTOR STATIONS TAKING REMAINDER RIGHTS
911B LOUIS G. & PAULINE H. ROCHELEAU
SLOPE 6+21-7+93 SL (300 SQ FT ±)
4 ROD R.O.W. (ALL RIGHT, TITLE, & INTEREST IN)

TITLE TAKEN: COND 5/13/61
RECORDED: COLCHESTER-BK. II-PG. 176-5/13/61



SEEDING (LAWNS) ITEM 611
STA 5+50 TO 10+25 LT

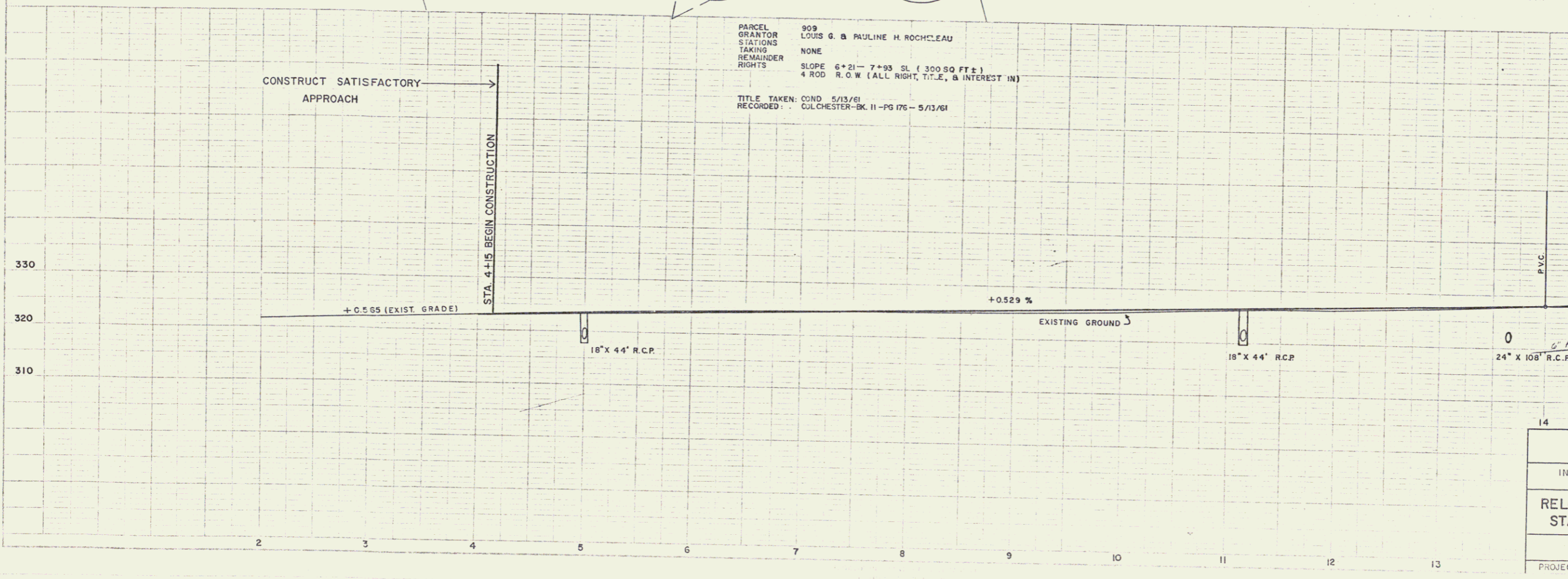
EXISTING G.M.P. CORP.

PARCEL GRANTOR STATIONS TAKING REMAINDER RIGHTS
912 FRANK J. & ANGELINA BISSONNETTE
2247 EC-2249 ES
0.8A ±
0.8A ±
SLOPE 10+45-10+65 SL (400 SQ FT ±)
4 ROD R.O.W. (ALL RIGHT, TITLE, & INTEREST IN)

TITLE TAKEN: COND 5/13/61
RECORDED: COLCHESTER-BK. II-PG. 176-5/13/61

NOTE:
G.M.P. CORP. FACILITIES TO BE REMOVED FROM U.S. RTE. NO. 7 BETWEEN APPROX. STA. 10+50 AND STA. 20+00. TO BE REPLACED BY AERIAL FACILITIES CROSSING THE INTERSTATE AERIALITY AT APPROX. STA. 2250+00. APPROXIMATE RELOCATION ROUTE: N.E.T.&T.C.C. EXACT LOCATIONS AS DIRECTED BY THE ENGINEER.

NOTE:
U.S. ROUTE 2 & 7 IS TO BE BUILT IN ITS ENTIRETY DURING STAGE I CONSTRUCTION.



STATE OF VERMONT
DEPARTMENT OF HIGHWAYS
INTERSTATE PROJECT IN WINDSOR, COLCHESTER
RELOCATION U.S. ROUTE 2 & 7
STA. 4+15 TO STA. 15+00
BOSWELL ENGINEERING CO.
CONSULTING ENGINEERS
RIDGEFIELD PARK, N.J.
PROJECT NO. I-89-3 (15) SHEET 16 OF 150