

PLAN	DATE
SURVEYED	
DESIGNED	
CHECKED	
IN CHARGE	
DATE	

CONSTRUCT DRIVE
STA 2206+80±
FROM LAPOINTE TO FILTER PLANT

SP-85
STA 2206+32-2207+05
A - 0.07A±

PLANTING TREES, SHRUBS AND
VINES - ITEM 631
SEE SHADED AREAS AND
QUANTITY SHEET

THREE CABLE GUARD RAIL
WITH STEEL POSTS ITEM-543 M
STA 2205+00 TO 2207+08 SB LT.
STA 2205+00 TO 2212+49 NB LT.
STA 2205+77 TO 2209+13 NB RT.
STA 2217+77 TO 2221+00 NB RT.

ALUMINUM CHAIN LINK FENCE -
ITEM 590-A (6' HIGH)
STA. 2213+90 TO 2218+60 LT.
FENCE TO BE ERRECTED PRIOR TO
CONSTRUCTION.

PAVED DITCH-ITEM 554 M
STA 2209+02 TO 2209+27 MED B/LT.
STA 2218+52 TO 2213+77 MED B/LT.
STA 2218+02 TO 2218+27 MED

FED ROAD DIV. NO.	STATE	FEDERAL PROJECT NO.	SHEET	TOTAL SHEETS
1	VERMONT	1-89-3105	12	150

DEMOLITION AND REMOVAL OF BUILDINGS
ITEM 586

4-A	STA 2210+30 LT.
4-B	2211+00 LT.
4-C	2211+80 LT.
4-D	2212+60 LT.
4-E	2213+00 LT.

PARCEL 900
GRANTOR: BRUCE W & PRISCILLA M SLEEPER
STATIONS: 2204+90 - 2205+40
TAKING: 140 SQ FT
REMAINDER: 0.43 AC
RIGHTS: NONE

TITLE TAKEN COND 5/15/62
RECORDED: WINDOSKI-BK 19-PG 384-5/15/62

SP-92
STA 2206+60-2207+05
A - 3720 SQ. FT.

* STAGE 2 ITEMS

PARCEL 903 A.B
GRANTOR: J. ADELARD & MELANIE GAGELIN
STATIONS: 2206+32 - 2213+90
TAKING: 15.82 AC
REMAINDER: 8.7 AC
RIGHTS: ROW-2206-32-2207+0

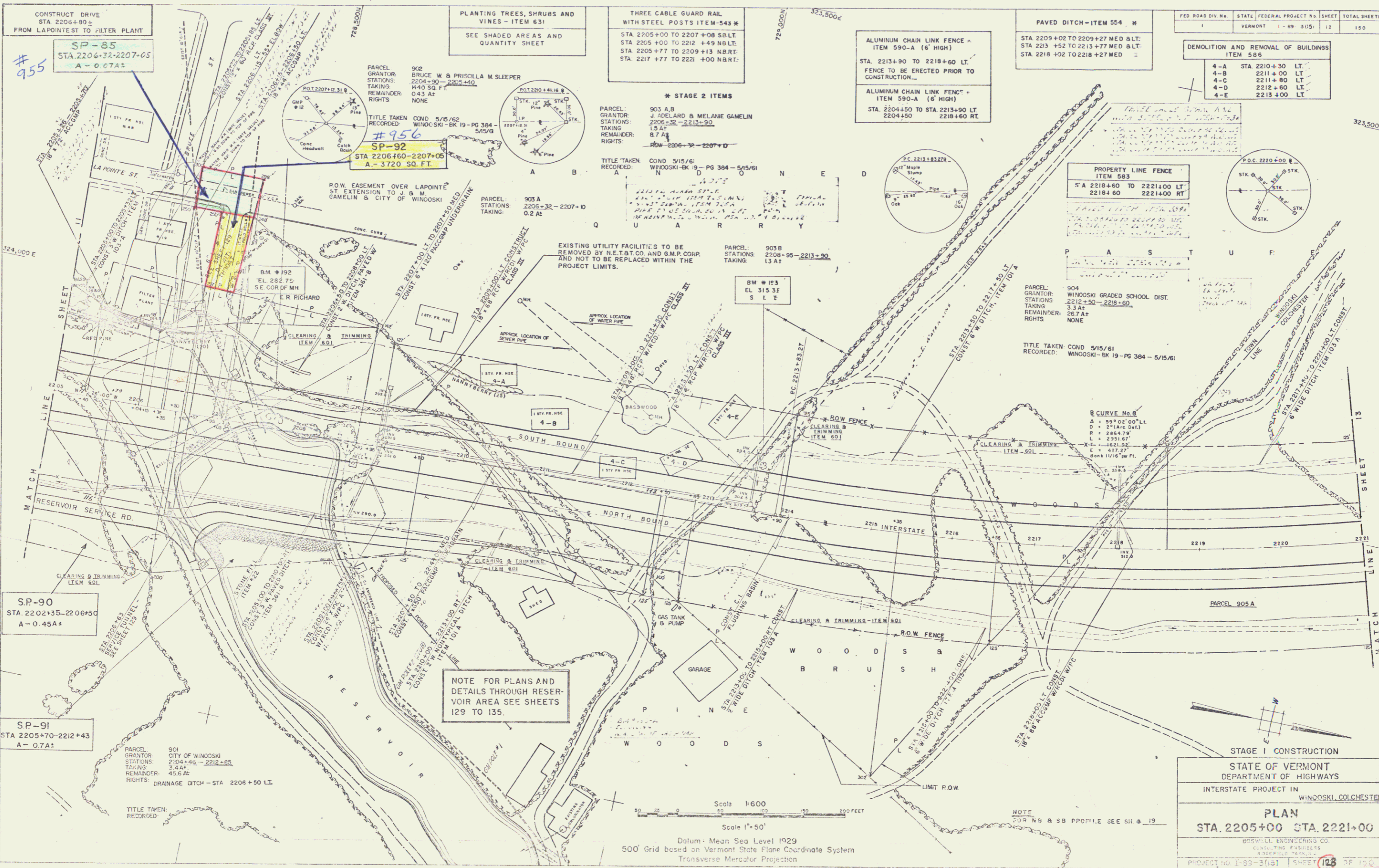
TITLE TAKEN COND 5/15/61
RECORDED: WINDOSKI-BK 19-PG 384-5/15/61

ALUMINUM CHAIN LINK FENCE -
ITEM 590-A (6' HIGH)
STA. 2204+50 TO STA 2213+80 LT
2204+50

PROPERTY LINE FENCE
ITEM 583
STA 2218+60 TO 2221+00 LT
2218+60 2221+00 RT

PARCEL 904
GRANTOR: WINDOSKI GRADED SCHOOL DIST.
STATIONS: 2212+50 - 2218+60
TAKING: 3.3 AC
REMAINDER: 287 AC
RIGHTS: NONE

TITLE TAKEN COND 5/15/61
RECORDED: WINDOSKI-BK 19-PG 384-5/15/61



SP-90
STA 2202+35-2206+50
A - 0.45A±

SP-91
STA 2205+70-2212+43
A - 0.7A±

PARCEL 901
GRANTOR: CITY OF WINDOSKI
STATIONS: 2204+99 - 2212+88
TAKING: 5.94 AC
REMAINDER: 45.6 AC
RIGHTS: DRAINAGE DITCH - STA 2206+50 LT.

TITLE TAKEN
RECORDED:

NOTE FOR PLANS AND
DETAILS THROUGH RESER-
VOIR AREA SEE SHEETS
129 TO 135.

Scale 1"=50'
Datum: Mean Sea Level 1929
500' Grid based on Vermont State Plane Coordinate System
Transverse Mercator Projection

STAGE 1 CONSTRUCTION

STATE OF VERMONT
DEPARTMENT OF HIGHWAYS

INTERSTATE PROJECT IN
WINDOSKI, COLCHESTER

PLAN
STA. 2205+00 STA. 2221+00

MOSWELL ENGINEERS CO.
CONSULTING ENGINEERS
4500 WINDY HILL RD.
WINDOSKI, VT 05791

PROJECT NO. 1-89-3105 SHEET 128 OF 150
STAGE 2 LENGTH/CONTR 1.89-3122
SHEET ID OF 88