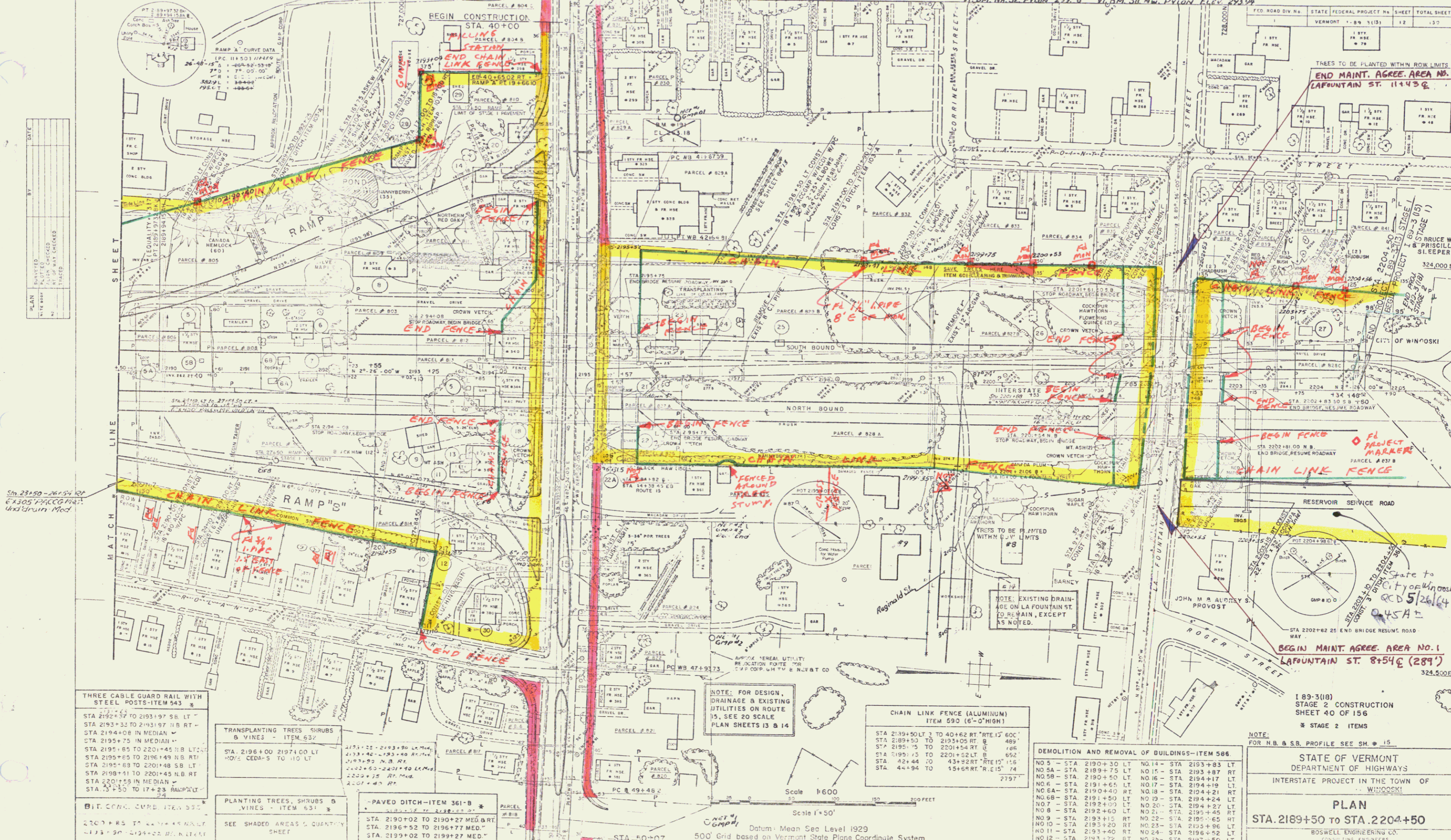


RTE. 15 OVERPASS  
 Vt. Rm. NB. SE. Pylon ELEV. 288.36 Vt. Rm. SB. NW. Pylon ELEV. 288.37

LAFOUNTAIN ST. OVERPASS  
 Vt. Rm. NB. SE. Pylon 292.6 Vt. Rm. SB. NW. Pylon ELEV. 293.04



DATE	BY	REVISION
		1. PLAN CHECKED
		2. PLAN CHECKED
		3. PLAN CHECKED
		4. PLAN CHECKED

Sta 2189+50 - 2194+50  
 6" x 30" P.C.C.G. RAMP  
 Underdrain Mod.

THREE CABLE GUARD RAIL WITH STEEL POSTS-ITEM 543  
 STA 2192+57 TO 2193+97 SB. LT.  
 STA 2193+32 TO 2193+97 NB. RT.  
 STA 2194+08 IN MEDIAN  
 STA 2195+75 IN MEDIAN  
 STA 2195+65 TO 2201+45 NB. LT.  
 STA 2195+65 TO 2196+49 NB. RT.  
 STA 2195+69 TO 2201+48 SB. LT.  
 STA 2198+11 TO 2201+45 NB. RT.  
 STA 2201+55 IN MEDIAN  
 STA 2203+50 TO 17+28 RAMP/PC

TRANSPLANTING TREES, SHRUBS & VINES - ITEM 532  
 STA. 2196+00 TO 2197+00 LT.  
 NO. 2 CEDAR - 5 TO 10 LT.  
 2193+22 - 2193+30 LT. Med.  
 2193+40 - 2193+40 RT. Med.  
 2194+00 - 2194+00 RT. Med.  
 2194+50 - 2194+50 RT. Med.  
 2202+15 RT. Med.  
 2201+45 RT.

PAVED DITCH-ITEM 361-B  
 STA. 2190+02 TO 2190+27 MED. RT.  
 STA. 2196+52 TO 2196+77 MED.  
 STA. 2199+02 TO 2199+27 MED.  
 2197+20 LT. 2197+25 RT.

NOTE: FOR DESIGN, DRAINAGE & EXISTING UTILITIES ON ROUTE 15, SEE 20 SCALE PLAN SHEETS 13 & 14

CHAIN LINK FENCE (ALUMINUM) ITEM 590 (6'-0" HIGH)  
 STA 2189+50 LT. 2 TO 40+62 RT. "RTE 15" 600'  
 STA 2189+50 TO 2193+05 RT. 8' 489'  
 STA 2195+15 TO 2201+54 RT. 166'  
 STA 2195+15 TO 2201+52 LT. 692'  
 STA 42+44 TO 43+22 RT. "RTE 15" 156'  
 STA. 44+94 TO 55+66 RT. "RTE 15" 74'  
 2757'

DEMOLITION AND REMOVAL OF BUILDINGS-ITEM 586  
 NO 5 - STA 2190+30 LT. NO 14 - STA 2193+83 RT.  
 NO 6 - STA 2190+50 LT. NO 15 - STA 2193+87 RT.  
 NO 7 - STA 2191+65 LT. NO 16 - STA 2194+17 LT.  
 NO 8 - STA 2190+40 RT. NO 17 - STA 2194+19 LT.  
 NO 9 - STA 2191+50 LT. NO 18 - STA 2194+21 RT.  
 NO 10 - STA 2192+00 LT. NO 19 - STA 2194+24 LT.  
 NO 11 - STA 2193+40 RT. NO 20 - STA 2194+27 LT.  
 NO 12 - STA 2193+42 RT. NO 21 - STA 2195+45 RT.  
 NO 13 - STA 2193+76 RT. NO 22 - STA 2195+45 RT.  
 NO 23 - STA 2195+96 LT.  
 NO 24 - STA 2196+52 LT.  
 NO 25 - STA 2197+50 LT.  
 NO 26 - STA 2200+54 LT.  
 NO 27 - STA 2203+50 LT.  
 NO 28 - STA 2192+05 LT.  
 NO 29 - STA 2193+70 LT.

NOTE: FOR NB. & SB. PROFILE SEE SH. # 15

STATE OF VERMONT  
 DEPARTMENT OF HIGHWAYS  
 INTERSTATE PROJECT IN THE TOWN OF WINDSOR  
 PLAN  
 STA. 2189+50 TO STA. 2204+50  
 PROJECT NO. 1-C9-3103 SHEET 12 OF 150  
 STAGE I

Scale 1"=50'  
 Datum: Mean Sea Level 1929  
 500' Grid based on Vermont State Plane Coordinate System  
 Transverse Mercator Projection