

VT. H.M. S.B. N.W. Pylon Cvr. Sta. 2174+75 to 2189+00  
 BIT CONC. CURB - ITEM 555  
 2174+25 TO 2175+40 S.B. LT.  
 2184+57 TO 2184+69 S.B. LT.  
 2175+90 TO 2179+61 N.B. RT.

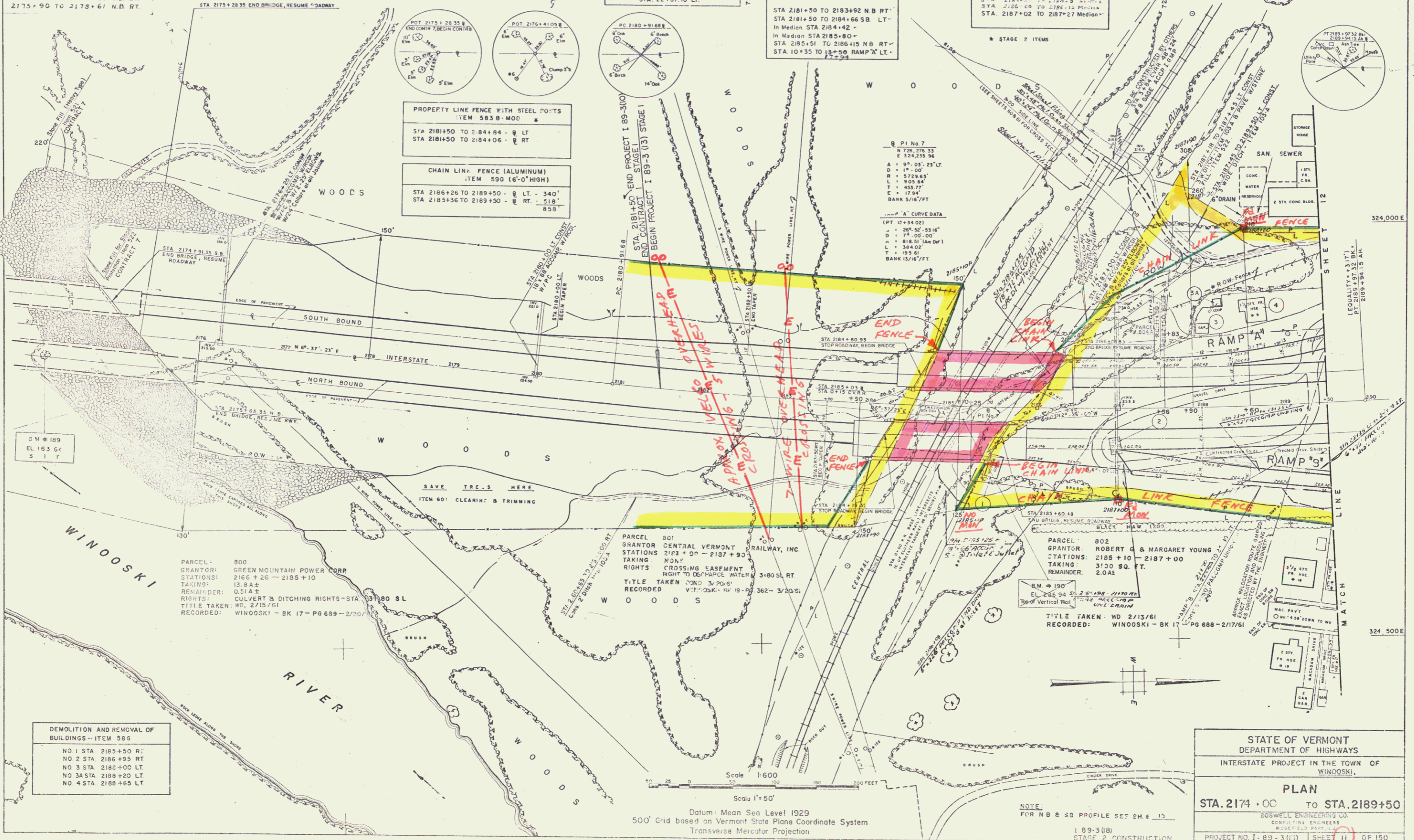
GRANITE SLOPE EDGING  
 ITEM 556 A  
 RAMP "M" BILLINGS  
 STA. 2275+10 LT.

VT. H.M. S.B. N.W. Pylon Cvr. Overpass Elev. 253.08  
 THREE CABLE GUARD RAIL WITH  
 STEEL POSTS - ITEM 543

PAVED DITCH - ITEM 561B

VT. H.M. S.B. N.W. Pylon Cvr. Overpass Elev. 259.10  
 FEDERAL PROJECT NO. VERMONT 1-89-3(13) SHEET TOTAL SHEETS  
 11 150

BY	DATE



PROPERTY LINE FENCE WITH STEEL POSTS  
 ITEM 563 B-MOD  
 STA 2181+50 TO 2184+84 - @ LT  
 STA 2181+50 TO 2184+06 - @ RT

CHAIN LINK FENCE (ALUMINUM)  
 ITEM 590 (6'-0" HIGH)  
 STA 2186+26 TO 2189+50 - @ LT - 340'  
 STA 2185+36 TO 2189+50 - @ RT - 518'  
 8' SB

STA. 2181+50 END PROJECT 1-89-3(13) STAGE 1  
 END CONTRACT - STAGE 1  
 BEGIN PROJECT 1-89-3(13) STAGE 1

PI No 7  
 N 72° 27' 33"  
 E 174° 23' 36"  
 A = 9° 05' 23" LT  
 D = 14'-00"  
 R = 1729.65'  
 L = 905.64'  
 T = 455.77'  
 E = 1794'  
 BANK 5 1/2' / FT

PI No 8  
 N 72° 27' 33"  
 E 174° 23' 36"  
 A = 9° 05' 23" LT  
 D = 14'-00"  
 R = 1729.65'  
 L = 905.64'  
 T = 455.77'  
 E = 1794'  
 BANK 5 1/2' / FT

PARCEL 800  
 GRANTOR: GREEN MOUNTAIN POWER CORP  
 STATIONS: 2166+26 - 2185+10  
 TAKING: 13.8 AC  
 REMAINDER: 0.51 AC  
 RIGHTS: CULVERT & DITCHING RIGHTS - STA 2180 SL  
 TITLE TAKEN: WD 2/15/61  
 RECORDED: WINDOSKI - BK 17 - PG 659 - 2/20/61

PARCEL 801  
 GRANTOR: CENTRAL VERMONT RAILWAY, INC.  
 STATIONS: 2183+00 - 2187+00  
 TAKING: NON  
 RIGHTS: CROSSING EASEMENT  
 RIGHT TO DISCHARGE WATER  
 TITLE TAKEN: WD 3/20/61  
 RECORDED: WINDOSKI - BK 19 - PG 362 - 3/20/61

PARCEL 802  
 GRANTOR: ROBERT G & MARGARET YOUNG  
 STATIONS: 2188+10 - 2187+00  
 TAKING: 3130 SQ. FT.  
 REMAINDER: 2.0 AC

DEMOLITION AND REMOVAL OF  
 BUILDINGS - ITEM 585  
 NO 1 STA. 2185+50 RT.  
 NO 2 STA. 2186+95 RT.  
 NO 3 STA. 2186+00 LT.  
 NO 4 STA. 2189+20 LT.  
 NO 4 STA. 2186+65 LT.

Scale 1" = 50'  
 Datum: Mean Sea Level 1929  
 500' Grid based on Vermont State Plane Coordinate System  
 Transverse Mercator Projection

NOTE:  
 FOR N.B. & S.B. PROFILE SEE SHEET 17  
 1-89-3(13)  
 STAGE 2 CONSTRUCTION  
 SHEET 33 OF 156

STATE OF VERMONT  
 DEPARTMENT OF HIGHWAYS  
 INTERSTATE PROJECT IN THE TOWN OF WINDOSKI.

PLAN  
 STA. 2174+00 TO STA. 2189+50

BOGSWELL ENGINEERING CO.  
 CONSULTING ENGINEERS  
 REGISTERED PROFESSIONAL ENGINEERS

PROJECT NO. I-89-3(13) SHEET 11 OF 150  
 STAGE 1