

DIT. C. CARD, ITEM 545
 2175+85 TO 2178+40 S.B. LT
 2175+90 TO 2178+41 N.B. Rt

| | | |
|------|----------|------|
| PLAN | DESIGNED | DATE |
| | CHECKED | |
| | BY | |
| | BY | |
| | BY | |

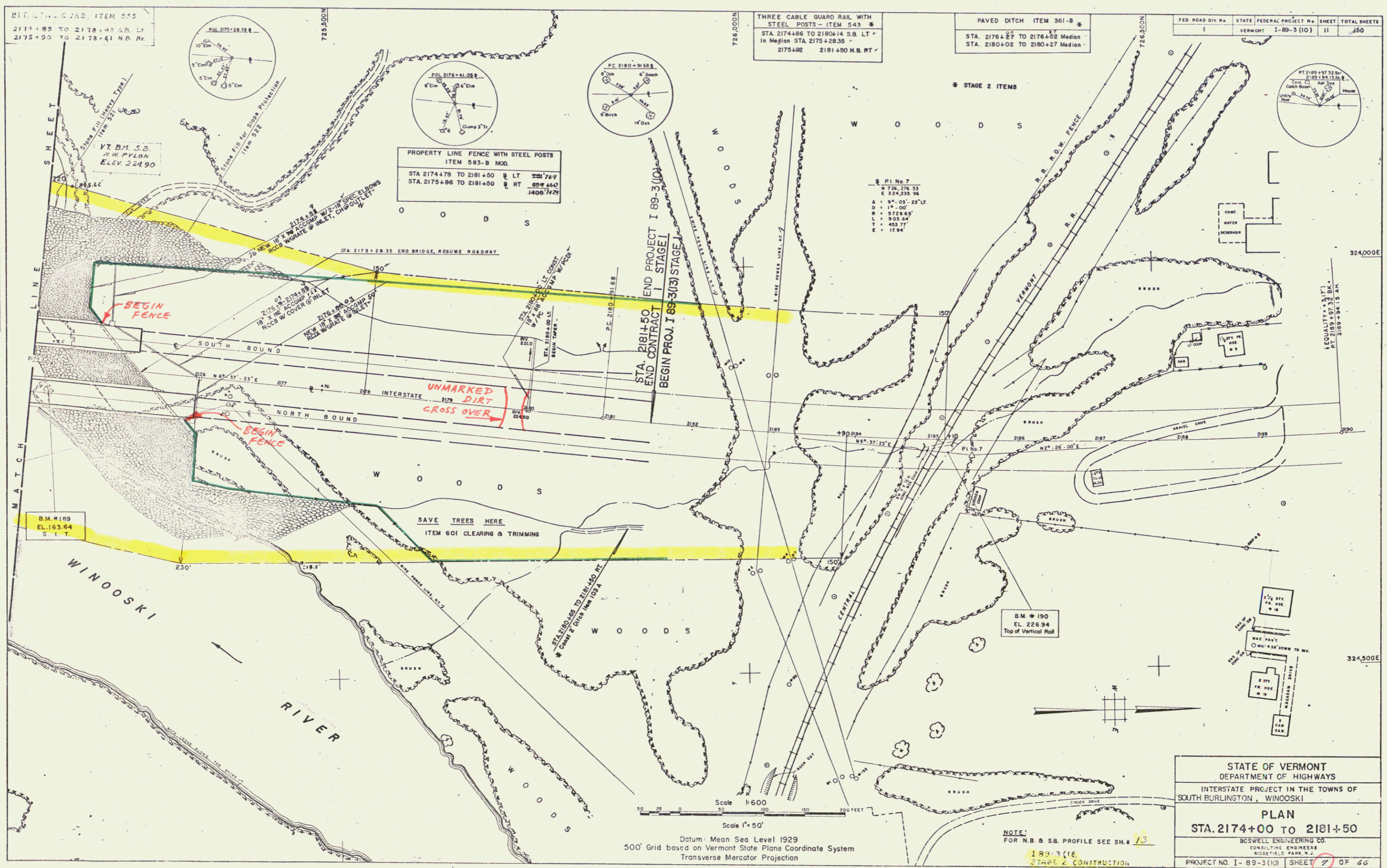
VT. B.M. S.B.
 W.W. PYLEON
 ELEV. 22490

PROPERTY LINE FENCE WITH STEEL POSTS
 ITEM 593-B MOD.
 STA 2174+78 TO 2181+50 @ LT 228'749
 STA 2175+86 TO 2181+50 @ RT 657'440
 1406'749

THREE CABLE GUARD RAIL WITH
 STEEL POSTS - ITEM 543 *
 STA. 2174+86 TO 2180+14 S.B. LT *
 In Median STA. 2175+28.35
 2175+92 2181+50 N.B. RT *

PAVED DITCH ITEM 361-B
 STA. 2176+27 TO 2176+52 Median
 STA. 2180+02 TO 2180+27 Median

| | | | | |
|--------------------|---------|---------------------|-------|--------------|
| FED. ROAD DIV. No. | STATE | FEDERAL PROJECT No. | SHEET | TOTAL SHEETS |
| I | VERMONT | I-89-3 (10) | 11 | 150 |



Datum: Mean Sea Level 1929
 500' Grid based on Vermont State Plane Coordinate System
 Transverse Mercator Projection

NOTE:
 FOR N.B. & S.B. PROFILE SEE SH. 13
 I-89-3 (18)
 STAGE 2 CONSTRUCTION
 SHEET 13A OF 15A

STATE OF VERMONT
 DEPARTMENT OF HIGHWAYS
 INTERSTATE PROJECT IN THE TOWNS OF
 SOUTH BURLINGTON, WINOOSKI

PLAN
 STA. 2174+00 TO 2181+50

BCSWELL ENGINEERING CO.
 CONSULTING ENGINEERS
 WINDFELT PARK, N.J.

PROJECT NO. I-89-3 (10) SHEET 11 OF 66
 STAGE 1 CONTRACT 1