

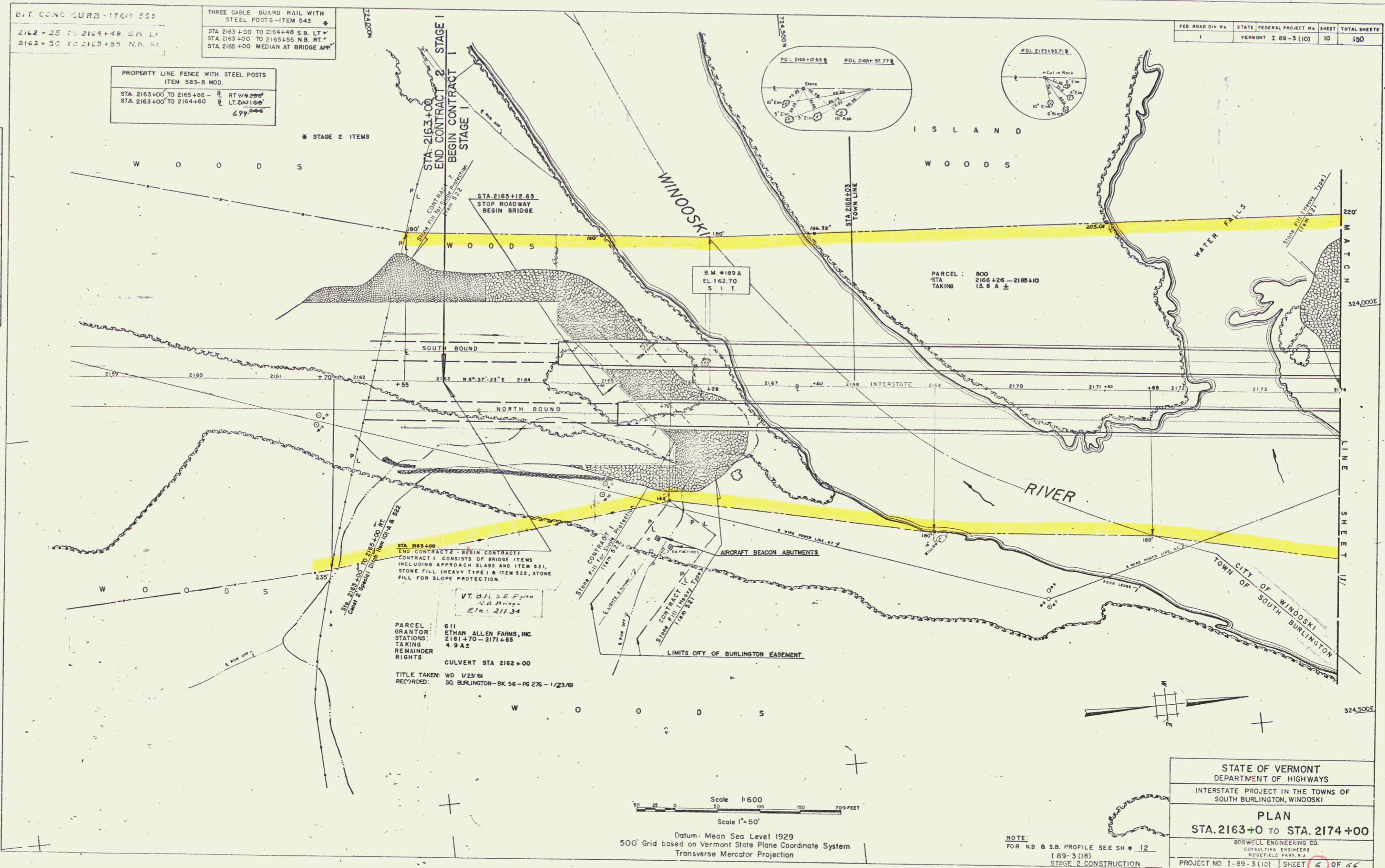
B.T. CONC. CURB-ITEM 555
 2162+25 TO 2164+48 S.A. LT.
 2162+50 TO 2163+55 N.A. RT.

THREE CABLE GUARD RAIL WITH
 STEEL POSTS-ITEM 543
 STA. 2163+00 TO 2164+48 S.B. LT.
 STA. 2163+00 TO 2165+55 N.B. RT.
 STA. 2165+00 MEDIAN AT BRIDGE APP.

PROPERTY LINE FENCE WITH STEEL POSTS
 ITEM 583-B MOD.
 STA. 2163+00 TO 2165+00 RT. 1/2" 200'
 STA. 2163+00 TO 2164+60 LT. 2" 180'
 694

FED. ROAD DIV. No.	STATE	FEDERAL PROJECT No.	SHEET	TOTAL SHEETS
1	VERMONT	X 89-3 (10)	10	190

PLAN	DATE
REVISED	
PLOTTED	
RT. OF WAY CHECKED	
TRACED	



Scale 1"=600
 Scale 1"=50'
 Datum: Mean Sea Level 1929
 500' Grid based on Vermont State Plane Coordinate System
 Transverse Mercator Projection

NOTE:
 FOR NB & S.B. PROFILE SEE SH # 12
 1 89-3 (18)
 STAGE 2 CONSTRUCTION
 SHEET 38 OF 156

STATE OF VERMONT
 DEPARTMENT OF HIGHWAYS
 INTERSTATE PROJECT IN THE TOWNS OF
 SOUTH BURLINGTON, WINOOSKI

PLAN
 STA. 2163+0 TO STA. 2174+00

BOSWELL ENGINEERING CO.
 CONSULTING ENGINEERS
 WOODFIELD PARK, N.J.

PROJECT NO. 1-89-3 (10) SHEET 6 OF 66
 STAGE 1 CONTRACT 1

PLEASE SEE NOTES TO 9
 DIRECTORY SET
 3/6/1975