

PLANTING TREES, SHRUBS & VINES
ITEM 631 *

SPECIAL GRASS SEED
STA. 2158+50 - 2161+25 RT.

THREE CABLE G JARD RAIL WITH
STEEL POSTS - ITEM 543 *

STA 2160+48 TO 2161+00 S B LT -
STA 2161+23 TO 2163+00 N B RT -
STA 2165+00 MEDIAN AT BRIDGE APP

PROPERTY LINE FENCE WITH STEEL POSTS
ITEM 583-B MOD.

STA 2158+50 TO 2163+00 - E RT - 458'
STA 2158+50 TO 2163+00 - E LT - 458'
516'

PAVED DITCH ITEM 361-B *

STA 2158+78 TO 2158+98 MED.
STA 2161+73 TO 2161+98 MED.
STA 2162+02 TO 2162+27 MED.
STA 2161+33 TO 2161+58 NBRT.
STA 2158+50 TO 2161+00 S B LT

DIT. CONC. CURB - ITEM 555 *

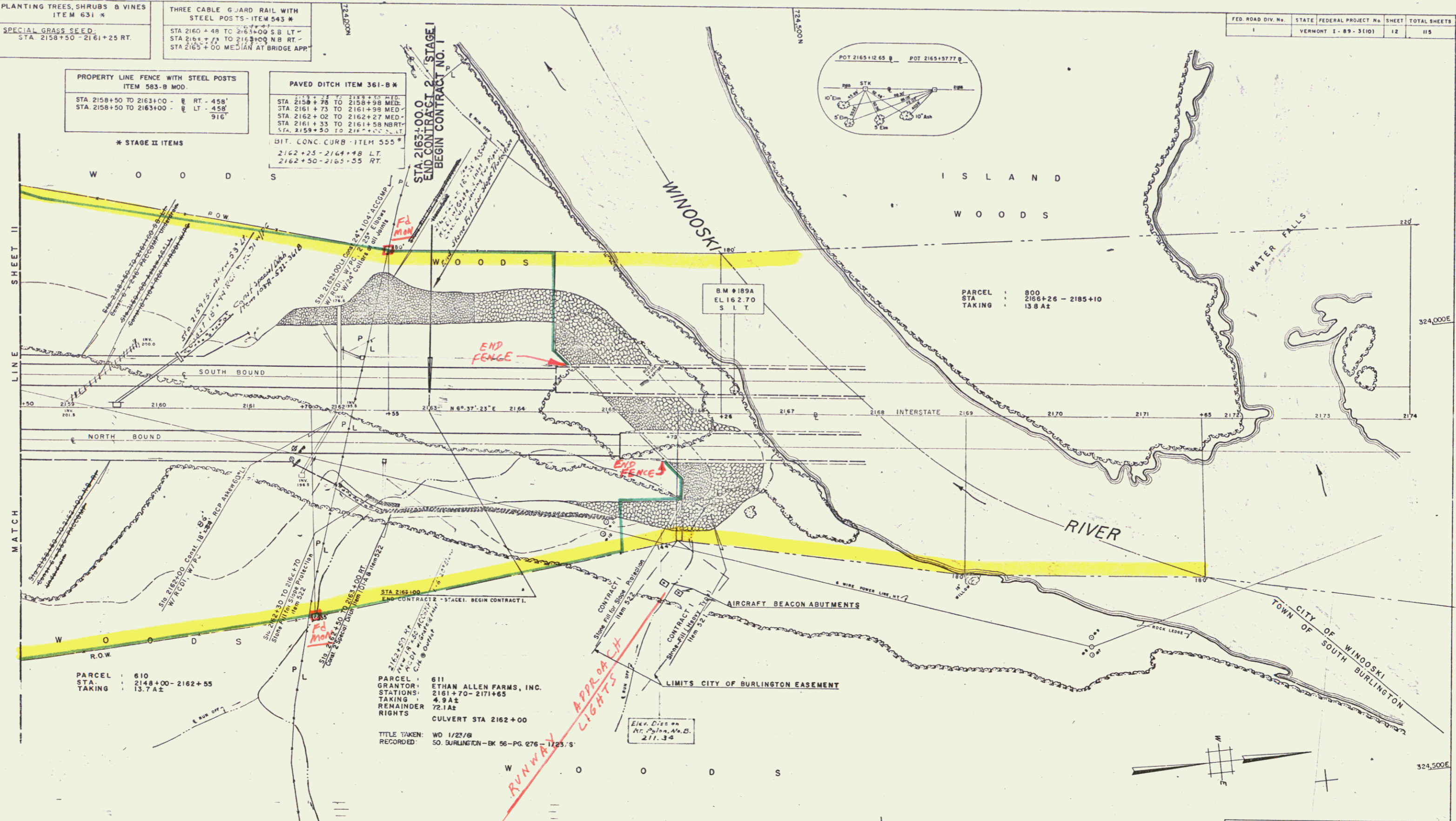
2162+25 - 2164+48 LT
2162+50 - 2165+55 RT.

* STAGE II ITEMS

STA 2163+00.0
END CONTRACT & STAGE I
BEGIN CONTRACT NO. 1

FED. ROAD DIV. No.	STATE	FEDERAL PROJECT No.	SHEET	TOTAL SHEETS
1	VERMONT	1-89-3(10)	12	115

PLAN	DATE
REVISED	
BY	
CHECKED	
DATE	
BY	
CHECKED	
DATE	
BY	
CHECKED	
DATE	



PARCEL : 610
STA : 2148+00 - 2162+55
TAKING : 13.74±

PARCEL : 611
GRANTOR : ETHAN ALLEN FARMS, INC.
STATIONS : 2161+70 - 2171+65
TAKING : 4.94±
REMAINDER RIGHTS : 72.14±
CULVERT STA 2162+00

TITLE TAKEN: WD 1/27/78
RECORDED: 50. BURLINGTON - BK 56 - PG. 276 - 1223/5

Runway Approach Lights

STATE OF VERMONT
DEPARTMENT OF HIGHWAYS
INTERSTATE PROJECT IN THE TOWNS OF
SOUTH BURLINGTON

PLAN
STA. 2158+50 TO STA 2165+13

BOSWELL ENGINEERING CO.
CONSULTING ENGINEERS
RIDGEFIELD PARK, N.J.

PROJECT NO. 1-89-3(10) SHEET 12 OF 115
STAGE 1 CONSTRUCTION
SHEET 37 OF 156

const + R.O.W