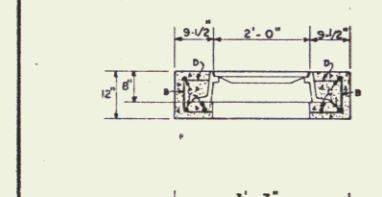
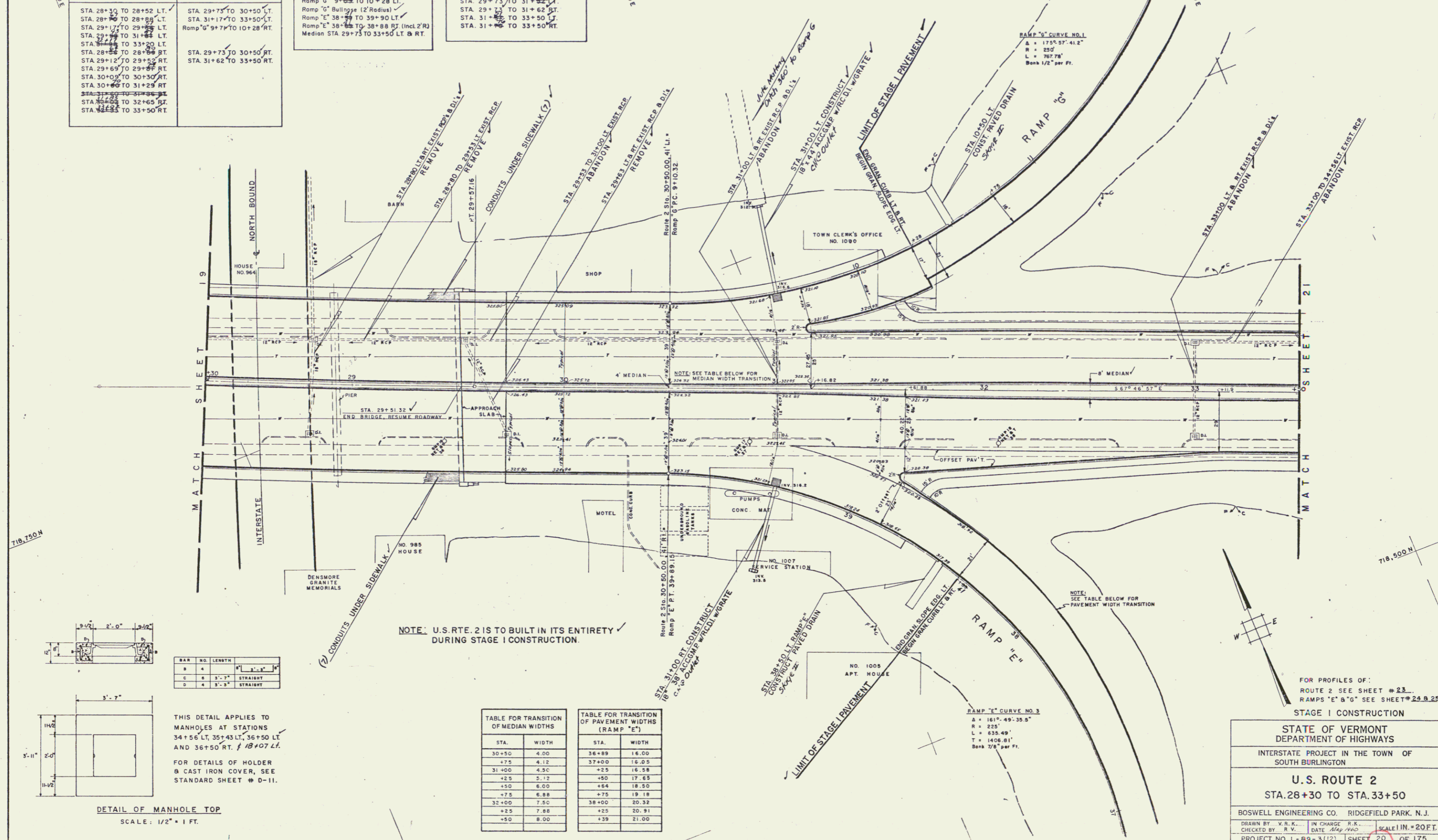


| REMOVING & RESETTING CURB ITEM 557 | |
|---------------------------------------|----------------------------|
| REMOVE | RESET |
| STA. 28+50 TO 28+52 LT. | STA. 29+75 TO 30+50 LT. |
| STA. 28+50 TO 28+55 LT. | STA. 31+17 TO 33+50 LT. |
| STA. 29+17 TO 29+25 LT. | Ramp "G" 9+71 TO 10+28 RT. |
| STA. 29+25 TO 31+25 LT. | |
| STA. 28+55 TO 33+30 LT. | |
| STA. 28+55 TO 28+60 RT. | STA. 29+75 TO 30+50 RT. |
| STA. 29+12 TO 29+55 RT. | STA. 31+62 TO 33+50 RT. |
| STA. 29+69 TO 29+87 RT. | |
| STA. 30+05 TO 30+30 RT. | |
| STA. 30+60 TO 31+29 RT. | |
| STA. 31+29 TO 31+55 RT. | |
| STA. 31+55 TO 32+65 RT. | |
| STA. 32+65 TO 33+50 RT. | |

| GRANITE CURB - ITEM 556-B |
|---|
| Ramp "G" 9+71 TO 10+28 LT. |
| Ramp "G" 38+28 TO 39+80 LT. |
| Ramp "E" 38+28 TO 38+88 RT. (Incl 2' R) |
| Median STA 29+75 TO 33+50 LT. & RT. |

| ONE COURSE CEMENT CONCRETE SIDEWALK - ITEM 550 |
|---|
| STA. 29+75 TO 31+25 LT. |
| STA. 29+75 TO 31+62 RT. |
| STA. 31+62 TO 33+50 LT. |
| STA. 31+62 TO 33+50 RT. |

| FED. ROAD DIV. NO. | STATE | FEDERAL PROJECT NO. | SHEET | TOTAL SHEETS |
|--------------------|---------|---------------------|-------|--------------|
| 1 | VERMONT | 1-89-3(12) | 20 | 175 |



| BAR | NO. | LENGTH | SPACING |
|-----|-----|--------|----------|
| R | 4 | 3'-1" | STRAIGHT |
| C | 4 | 3'-1" | STRAIGHT |
| D | 4 | 3'-1" | STRAIGHT |

THIS DETAIL APPLIES TO MANHOLES AT STATIONS 34+56 LT, 35+43 LT, 36+50 LT AND 36+50 RT. & 18+07 LT.

FOR DETAILS OF HOLDER & CAST IRON COVER, SEE STANDARD SHEET # D-11.

NOTE: U.S. RTE. 2 IS TO BE BUILT IN ITS ENTIRETY DURING STAGE I CONSTRUCTION.

| TABLE FOR TRANSITION OF MEDIAN WIDTHS | |
|---------------------------------------|-------|
| STA. | WIDTH |
| 30+50 | 4.00 |
| +75 | 4.12 |
| 31+00 | 4.50 |
| +25 | 5.12 |
| +50 | 6.00 |
| +75 | 6.88 |
| 32+00 | 7.50 |
| +25 | 7.88 |
| +50 | 8.00 |

| TABLE FOR TRANSITION OF PAVEMENT WIDTHS (RAMP "E") | |
|--|-------|
| STA. | WIDTH |
| 36+89 | 16.00 |
| 37+00 | 16.03 |
| +25 | 16.58 |
| +50 | 17.65 |
| +64 | 18.50 |
| +75 | 19.18 |
| 38+00 | 20.32 |
| +25 | 20.91 |
| +39 | 21.00 |

FOR PROFILES OF:
ROUTE 2 SEE SHEET # 23.
RAMPS "E" & "G" SEE SHEET # 29 & 25

STAGE I CONSTRUCTION

STATE OF VERMONT
DEPARTMENT OF HIGHWAYS

INTERSTATE PROJECT IN THE TOWN OF
SOUTH BURLINGTON

U.S. ROUTE 2
STA. 28+30 TO STA. 33+50

BOSWELL ENGINEERING CO. RIDGEFIELD PARK, N. J.

DRAWN BY: V.R.K. IN CHARGE: R.K.
CHECKED BY: R.V. DATE: May 1960 SCALE: 1/4" = 20 FT.

PROJECT NO. 1-89-3(12) SHEET 20 OF 175