

PLAN	DATE
DESIGNED	
PLOTTED	
CHECKED	
BY	
DATE	

CURVE DATA					
NO.	A	R	L	T	BACK SIGHT
C-3	23° 14' 36"	818.51'	332.05'	168.34'	
RAMP H					
H-3	55° 26' 04"	500.00'	483.76'	262.79'	

**GRANITE SLOPE EDGING
ITEM 556-A *
STA 34+18 TO 37+50 LI Ramp "C"
Ramp "C" Bull nose STA 212+94.5 LI
STA 30+90 TO 34+00 RI Ramp "H"2118+67**

**STANDARD STEEL BEAM GUARD RAIL
WITH STEEL POSTS-ITEM 547-A *
Ramp "C" STA 33+03 TO 34+32 RR
2118+67
STA 212+95 TO 2113+55 LT. & RT.**

**THREE CABLE GUARD RAIL WITH
STEEL POSTS-ITEM 543 *
STA 2110+00 TO 2111+84 SB LT.
STA 2110+00 TO 2110+50 NB RT.
STA 2119+52 TO 2120+00 NB RT.
2118+67**

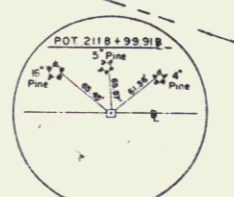
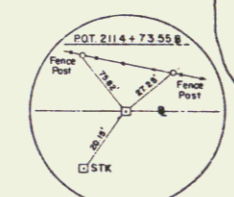
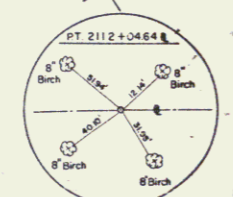
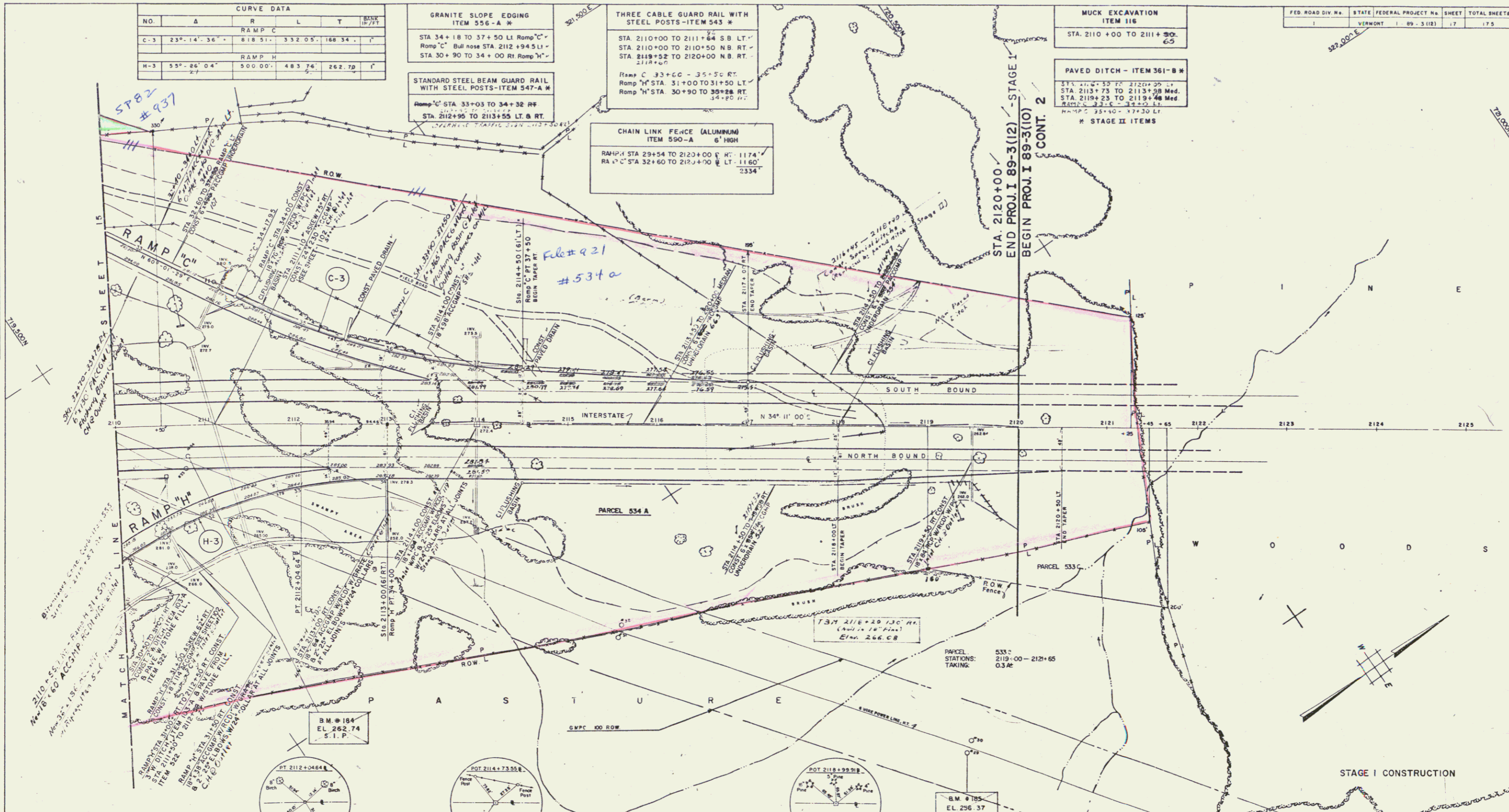
Ramp "C" 33+60 - 35+50 RT.
Ramp "H" STA 31+00 TO 31+50 LT.
Ramp "H" STA 30+90 TO 30+28 RT.
34+00 RT.

**CHAIN LINK FENCE (ALUMINUM)
ITEM 590-A
RAMP STA 29+54 TO 2123+00 RT. 1174'
RA "C" STA 32+60 TO 2123+00 LT. 1160'
2334'**

**MUCK EXCAVATION
ITEM 116
STA. 2110+00 TO 2111+50.
65'**

**PAVED DITCH - ITEM 361-B *
STA. 2114+50 TO 2120+00 LT.
STA 2113+73 TO 2113+98 Med.
STA 2119+23 TO 2119+46 Med.
RAMP C 35+10 - 37+30 LT.
RAMP H 35+10 - 37+30 LT.
* STAGE II ITEMS**

FED. ROAD DIV. NO.	STATE	FEDERAL PROJECT NO.	SHEET	TOTAL SHEETS
1	VERMONT	189-3(12)	17	175



Scale 1"=50'
Scale 1:600
Datum: Mean Sea Level 1929
500' Grid based on Vermont State Plane Coordinate System
Transverse Mercator Projection

NOTE
FOR NB. & SB PROFILE SEE SH # 23
FOR RAMP PROFILES SEE SHEETS # 25, 26
189-3(18)
STAGE 2 CONSTRUCTION
SHEET 33 OF 156

STATE OF VERMONT
DEPARTMENT OF HIGHWAYS
INTERSTATE PROJECT IN THE TOWN OF
SOUTH BURLINGTON

**PLAN
STA. 2110+0 TO STA. 2120+0**

EDSWELL ENGINEERING CO.
CONSULTING ENGINEERS
ROCKFORD PARK, N.H.

PROJECT NO. 1-89-3(12) SHEET 17A OF 175

36