

DATE	
BY	
PLAN	
1957	
1958	
1959	
1960	
1961	
1962	
1963	
1964	
1965	
1966	
1967	
1968	
1969	
1970	
1971	
1972	
1973	
1974	
1975	
1976	
1977	
1978	
1979	
1980	
1981	
1982	
1983	
1984	
1985	
1986	
1987	
1988	
1989	
1990	
1991	
1992	
1993	
1994	
1995	
1996	
1997	
1998	
1999	
2000	
2001	
2002	
2003	
2004	
2005	
2006	
2007	
2008	
2009	
2010	
2011	
2012	
2013	
2014	
2015	
2016	
2017	
2018	
2019	
2020	

CURVE DATA				
NO.	D	R	L	T
E-3	161°-49'-35.5"	225.0	633.45	1406.81
F-3	66°-19'-00.4"	200.0	23.49	30.82
G-1	175°-57'-4.116"	230.0	767.78	172
H-1	175°-57'-4.116"	230.0	767.78	172

GRANITE SLOPE EDGING
ITEM 556-A #

STA 364.72 TO 373.39 L. "Ramp E"
STA 22+37 TO 2+26 L. "Ramp F"
STA 10+28 TO 1+03 L. "Ramp G"
STA 22+25 TO 23+73 R. "Ramp H"

CONSTRUCT DRIVES

Reloc Dorset St. 3+45.75
Reloc Dorset St. 3+55.00
Reloc Dorset St. 8+66.00
Reloc Dorset St. 8+66.00

PLANTING TREES - SHRUBS - J
VINES - ITEM 631 - MOD. M

ISEE SHADED AREAS & QUANTITY SHEET
SPECIAL GRASS SEED:
U.S. RTE. 2 STA. 31+00 TO 31+60. RT.

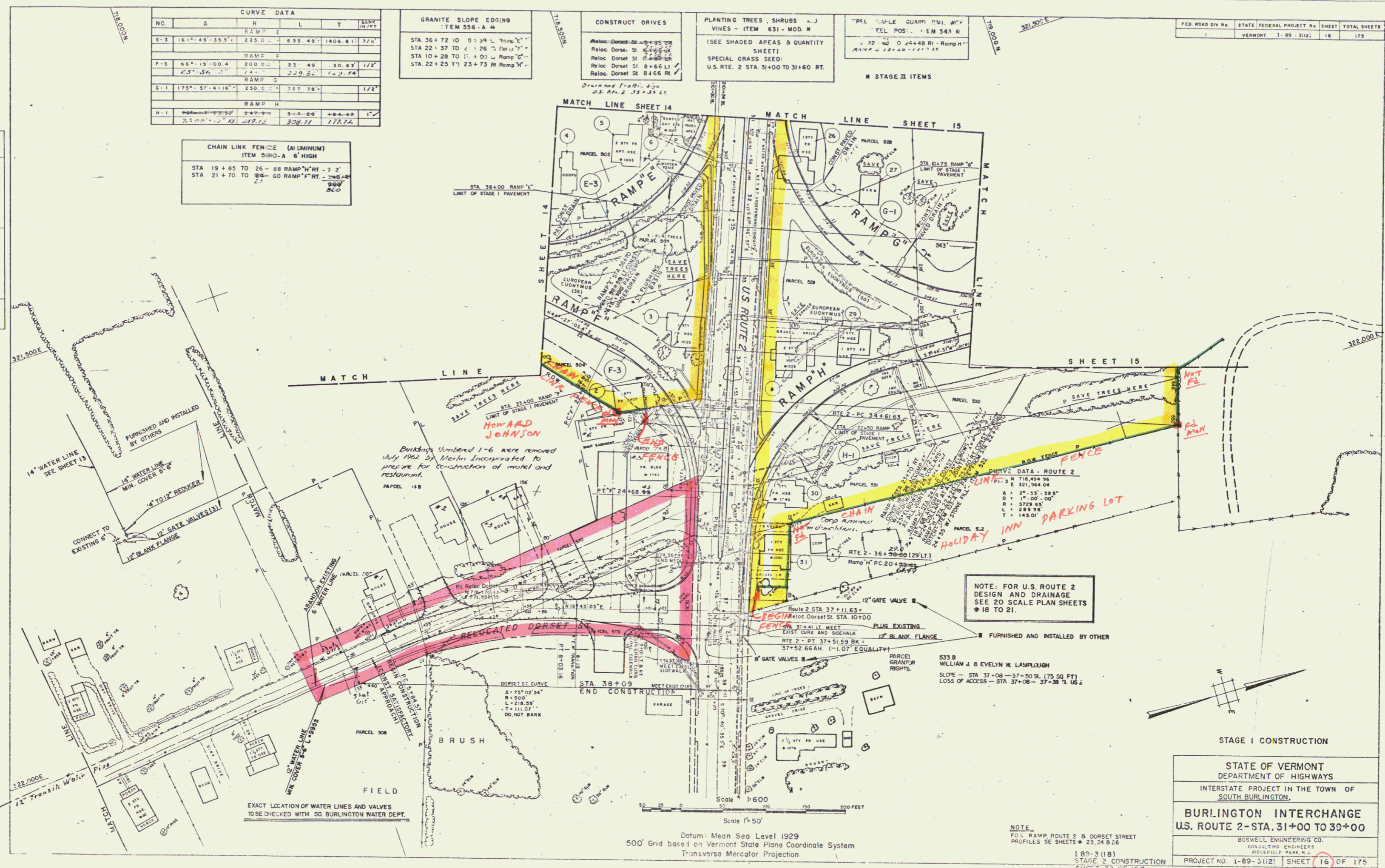
"PFL" SAMPLE QUAMP TML WITH
"FEL" POS. - ITEM 543 K

321.500E
322.000E

FED. ROAD DIV. NO.	STATE	FEDERAL PROJECT NO.	SHEET	TOTAL SHEETS
1	VERMONT	1-89-3(12)	16	175

CHAIN LINK FENCE (ALUMINUM)
ITEM 550-A 6' HIGH

STA 19+85 TO 26-88 RAMP "H" RT. - 7' 2"
STA 21+70 TO 28-60 RAMP "H" RT. - 7' 2"
500'



Building Number 1-6 were removed July 1962 by Merlin Incorporated to prepare for construction of motel and restaurant.

NOTE: FOR U.S. ROUTE 2 DESIGN AND DRAINAGE SEE 20 SCALE PLAN SHEETS #18 TO 21.

STAGE I CONSTRUCTION

STATE OF VERMONT
DEPARTMENT OF HIGHWAYS
INTERSTATE PROJECT IN THE TOWN OF
SOUTH BURLINGTON.

BURLINGTON INTERCHANGE
U.S. ROUTE 2 - STA. 31+00 TO 33+00

BOSWELL ENGINEERING CO.
CONSULTING ENGINEERS
BIOFIELD PARK, N.J.

PROJECT NO. 1-89-3(12) SHEET 16 OF 175

Datum: Mean Sea Level 1929
500' Grid based on Vermont State Plane Coordinate System
Transverse Mercator Projection

NOTE:
FOR RAMP, ROUTE 2 & DORSET STREET
PROFILES SEE SHEETS # 23, 24 & 26

1-89-3(18)
STAGE 2 CONSTRUCTION
SHEET 32 OF 156