

CURVE DATA			
NO.	Δ	R	T
A-3	68°-44'-00"	250.00	299.91
RAMP B			
B-1	3°-36'-00"	572.58	360.00
B-5	71°-56'-41"	213.65	258.27
RAMP C			
C-1	73°-33'-36"	250.00	320.97
C-2	12°-31'-56"	818.57	179.03
RAMP D			
D-1	3°-04'-48"	572.58	308.00
D-2	28°-09'-08"	300.00	147.41
D-3	91°-45'-27"	150.00	840.22
D-4	140°-49'-09"	350.00	614.44
D-5	12°-31'-56"	213.65	258.27
RAMP E			
E-3	161°-49'-35.5"	225.00	635.49
RAMP G			
G-1	175°-57'-41.16"	250.00	767.78
G-2	60°-10'-15.56"	150.00	137.09
G-3	31°-28'-34"	300.00	164.81
RAMP H			
H-2	74°-59'-41.29"	298.00	130.00
H-3	26°-04'	500.00	483.76

PI No. 48	
Δ	147°-24'-30.19"
R	1000.82
T	545.29
PC	20+01.5
PT	21+47.27
Δ	18°-31'-00.00"
R	1000.82
T	151.77
PC	20+01.5
PT	21+53.27

PI No. 1, RTE 2	
Δ	118°-55'-21.18"
R	22+85.28
T	29+57.18
PC	16+98.8
PT	20+01.5
Δ	8°-59'-00.00"
R	675.88
T	132.24
PC	16+98.8
PT	18+31.0

PI No. 2, RTE 2	
Δ	118°-55'-21.18"
R	22+85.28
T	29+57.18
PC	16+98.8
PT	20+01.5
Δ	8°-59'-00.00"
R	675.88
T	132.24
PC	16+98.8
PT	18+31.0

PI No. 3, RTE 2	
Δ	118°-55'-21.18"
R	22+85.28
T	29+57.18
PC	16+98.8
PT	20+01.5
Δ	8°-59'-00.00"
R	675.88
T	132.24
PC	16+98.8
PT	18+31.0

PI No. 4, RTE 2	
Δ	118°-55'-21.18"
R	22+85.28
T	29+57.18
PC	16+98.8
PT	20+01.5
Δ	8°-59'-00.00"
R	675.88
T	132.24
PC	16+98.8
PT	18+31.0

PI No. 5, RTE 2	
Δ	118°-55'-21.18"
R	22+85.28
T	29+57.18
PC	16+98.8
PT	20+01.5
Δ	8°-59'-00.00"
R	675.88
T	132.24
PC	16+98.8
PT	18+31.0

PI No. 6, RTE 2	
Δ	118°-55'-21.18"
R	22+85.28
T	29+57.18
PC	16+98.8
PT	20+01.5
Δ	8°-59'-00.00"
R	675.88
T	132.24
PC	16+98.8
PT	18+31.0

PI No. 7, RTE 2	
Δ	118°-55'-21.18"
R	22+85.28
T	29+57.18
PC	16+98.8
PT	20+01.5
Δ	8°-59'-00.00"
R	675.88
T	132.24
PC	16+98.8
PT	18+31.0

PI No. 8, RTE 2	
Δ	118°-55'-21.18"
R	22+85.28
T	29+57.18
PC	16+98.8
PT	20+01.5
Δ	8°-59'-00.00"
R	675.88
T	132.24
PC	16+98.8
PT	18+31.0

PI No. 9, RTE 2	
Δ	118°-55'-21.18"
R	22+85.28
T	29+57.18
PC	16+98.8
PT	20+01.5
Δ	8°-59'-00.00"
R	675.88
T	132.24
PC	16+98.8
PT	18+31.0

PI No. 10, RTE 2	
Δ	118°-55'-21.18"
R	22+85.28
T	29+57.18
PC	16+98.8
PT	20+01.5
Δ	8°-59'-00.00"
R	675.88
T	132.24
PC	16+98.8
PT	18+31.0

PI No. 11, RTE 2	
Δ	118°-55'-21.18"
R	22+85.28
T	29+57.18
PC	16+98.8
PT	20+01.5
Δ	8°-59'-00.00"
R	675.88
T	132.24
PC	16+98.8
PT	18+31.0

PI No. 12, RTE 2	
Δ	118°-55'-21.18"
R	22+85.28
T	29+57.18
PC	16+98.8
PT	20+01.5
Δ	8°-59'-00.00"
R	675.88
T	132.24
PC	16+98.8
PT	18+31.0

PI No. 13, RTE 2	
Δ	118°-55'-21.18"
R	22+85.28
T	29+57.18
PC	16+98.8
PT	20+01.5
Δ	8°-59'-00.00"
R	675.88
T	132.24
PC	16+98.8
PT	18+31.0

PI No. 14, RTE 2	
Δ	118°-55'-21.18"
R	22+85.28
T	29+57.18
PC	16+98.8
PT	20+01.5
Δ	8°-59'-00.00"
R	675.88
T	132.24
PC	16+98.8
PT	18+31.0

PI No. 15, RTE 2	
Δ	118°-55'-21.18"
R	22+85.28
T	29+57.18
PC	16+98.8
PT	20+01.5
Δ	8°-59'-00.00"
R	675.88
T	132.24
PC	16+98.8
PT	18+31.0

PLAN	DATE	BY
PREPARED		
CHECKED		
DATE		

CHAIN LINK FENCE (ALUMINUM) ITEM 590-A 6' HIGH  
 STA 22+21 TO 32+66 RAMP 'C' LT. 344'  
 STA 26+88 TO 29+54 RAMP 'H' RT. 250'  
 STA 25+77 TO 29+27 RAMP 'A' LT. 200'

NOTE: FOR U.S. ROUTE 2 DESIGN AND DRAINAGE SEE 20 SCALE PLAN SHEETS 18 TO 21.

PAVED DITCH - ITEM 361-B \*  
 STA 2101+48 TO 2101+68 Median  
 STA 2101+43 TO 2101+68 RL  
 STA 2101+43 TO 2101+68 RL  
 STA 2104+23 TO 2104+68 Med.  
 STA 2108+73 TO 2108+98 Med.  
 RAMP C STA 21+30 TO 21+80 LT.  
 RAMP D STA 21+20 TO 21+80 RT.  
 RAMP A STA 25+30 TO 25+75 LT.  
 RAMP H STA 25+30 TO 25+75 RT.

PLANTING TREES, SHRUBS & VINES - ITEM 631 \*  
 (SEE SHADED AREAS & QUANTITY SPECIAL GRASS SEED: U.S. RTE. 2 STA 25+00 TO 27+00 RT. & LT. U.S. RTE. 2 STA 29+50 TO 31+00 LT. U.S. RTE. 2 STA 29+35 TO 31+00 RT.

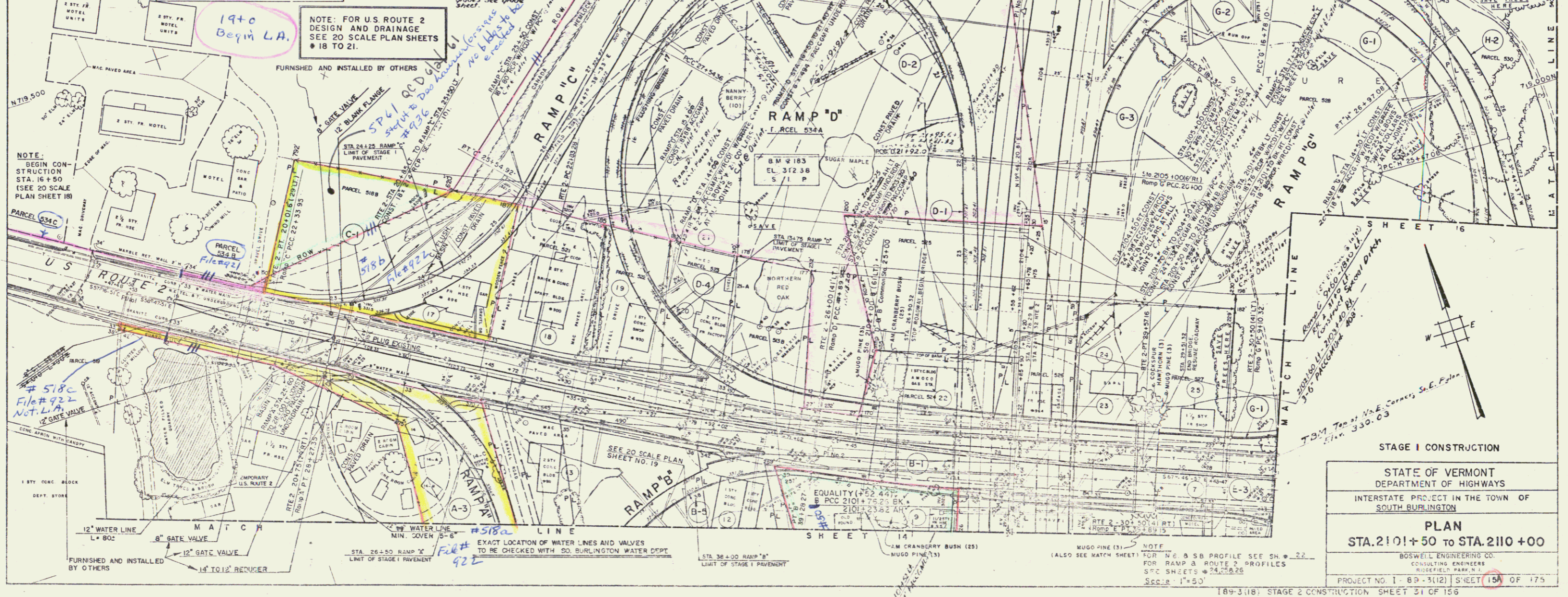
CLEARING & TRIMMING - ITEM 601 \*  
 SEE NOTES "SAVE" AND "SAVE TREES HERE"

THREE CABLE GUARD RAIL WITH STEEL POSTS - ITEM 543  
 STA 2104+00 TO 2105+00 N.B. RT. \*  
 STA 2106+98 TO 2110+00 N.B. RT. \*  
 STA 2107+00 TO 2110+00 S.B. LT. \*

STANDARD STEEL BEAM GUARD RAIL WITH STEEL POSTS - ITEM 547-A  
 STA 2101+50 BK TO 2102+32AH-NB LT.  
 STA 2101+54 BK TO 2103+28AH-NB RT.  
 STA 2101+54 AH TO 2103+63AH-SB LT.  
 STA 2103+29 AH TO 2102+83AH-SB RT.

MUCK EXCAVATION ITEM 116  
 STA 2104+00 TO 2110+00  
 STA 2103+25 TO 2110+00

GRANITE SLOPE EDGING ITEM 556-A \*  
 STA 25+60 TO 26+59 LI RAMP 'A' \*  
 STA 37+35 TO 38+24 RI RAMP 'B' \*  
 STA 23+92 TO 25+55 LI RAMP 'C' \*  
 STA 13+32 TO 21+58 RI RAMP 'D' \*  
 STA 13+00 TO 20+00 LI RAMP 'G' \*  
 RAMP 'G' Bl' nose STA 2106+30 B RI \*  
 STA 25+68 TO 26+98 LI RAMP 'H' \*  
 STA 29+16 TO 30+90 RI RAMP 'H' \*



STAGE I CONSTRUCTION

STATE OF VERMONT  
 DEPARTMENT OF HIGHWAYS

INTERSTATE PROJECT IN THE TOWN OF  
 SOUTH BURLINGTON

PLAN  
 STA. 2101+50 TO STA. 2110+00

BOSWELL ENGINEERING CO.  
 CONSULTING ENGINEERS  
 RUSSELL PARK N.J.

PROJECT NO. 1-89-3(12) SHEET 15 OF 175

189-3(18) STAGE 2 CONSTRUCTION SHEET 31 OF 156