

CURVE DATA		PI No. 1, RTE 2	
NO.	Δ	PI	RT
RAMP A			
A-3	68°-44'-00"	250.00'	299.91'
RAMP B			
B-1	3°-56'-00"	5723.58'	360.00'
B-5	71°-56'-41"	213.65'	268.27'
RAMP C			
C-1	73°-33'-36"	250.00'	320.97'
C-2	12°-51'-56"	818.51'	179.03'
C-2	52°-02'-00"	276.27'	276.92'
RAMP D			
D-1	3°-04'-48"	5723.28'	308.00'
D-2	28°-09'-08"	300.00'	147.41'
D-3	8°-45'-27"	150.00'	140.22'
D-4	140°-49'-09"	250.00'	614.44'
D-4	12°-51'-56"	818.51'	179.03'
D-5	37°-25'-24"	276.27'	276.92'
RAMP E			
E-3	181°-49'-33.3"	225.00'	435.49'
RAMP G			
G-1	175°-57'-41.16"	250.00'	767.78'
G-2	60°-10'-15.56"	150.00'	157.09'
G-3	31°-28'-34"	300.00'	164.81'
RAMP H			
H-2	24°-59'-41.29"	298.00'	150.00'
H-3	55°-26'-04"	500.00'	483.76'

STANDARD STEEL BEAM GUARD RAIL WITH STEEL POSTS - ITEM 547-A

STA 2101+50 BK TO 2102+32AH-NB LT *
 STA 2101+50 BK TO 2103+28AH-NB RT *
 STA 2101+54 AH TO 2106+63AH-SB LT *
 STA 2101+29 AH TO 2102+63AH-SB RT *

PLANTING TREES, SHRUBS & VINES - ITEM 631 *

(SEE SHADED AREAS & QUANTITY SHEET)

SPECIAL GRASS SEED:
 U.S. RTE. 2 STA. 25+00 TO 27+00 RT & LT.
 U.S. RTE. 2 STA. 29+50 TO 31+00 LT.
 U.S. RTE. 2 STA. 29+35 TO 31+00 RT.

THREE CABLE GUARD RAIL WITH STEEL POSTS - ITEM 543

STA 2104+00 TO 2105+00 NB RT *
 STA 2106+98 TO 2107+00 NB RT *
 STA 2107+00 TO 2110+00 SB LT *

Ramp "B" STA 37+44 TO 40+00 RT *
 Ramp "D" STA 11+30 TO 14+50 RT *
 Ramp "G" STA 13+00 TO 20+00 LT *
 Ramp "H" STA 16+40 TO 18+00 RT *
 Ramp "M" STA 19+96 TO 31+00 LT *
 Ramp "N" STA 30+00 TO 30+50 RT *
 Route 2 STA 29+28 TO 24+50 RT *
 Route 2 STA 29+65 TO 30+50 RT *

PAVED DITCH - ITEM 361-B *

STA 2101+43 TO 2101+68 Median
 STA 2101+45 TO 2101+68 LT
 STA 2101+43 TO 2101+68 RT
 STA 2104+23 TO 2104+48 Med.
 STA 2108+73 TO 2108+98 Med.
 STA 2108+73 TO 2108+98 LT
 STA 2108+73 TO 2108+98 RT
 RAMP A STA 22+21 TO 21+27 RT
 RAMP B STA 26+88 TO 29+54 RT
 RAMP C STA 25+77 TO 29+27 RT

CHAIN LINK FENCE (ALUMINUM) ITEM 590-A 6' HIGH

STA 22+21 TO 32+60 RAMP "C" LT - 844'
 STA 26+88 TO 29+54 RAMP "H" RT - 250'
 STA 25+77 TO 29+27 RAMP "A" LT - 1404'

NOTE: FOR U.S. ROUTE 2 DESIGN AND DRAINAGE SEE 20 SCALE PLAN SHEETS # 18 TO 21.

MUCK EXCAVATION ITEM 116

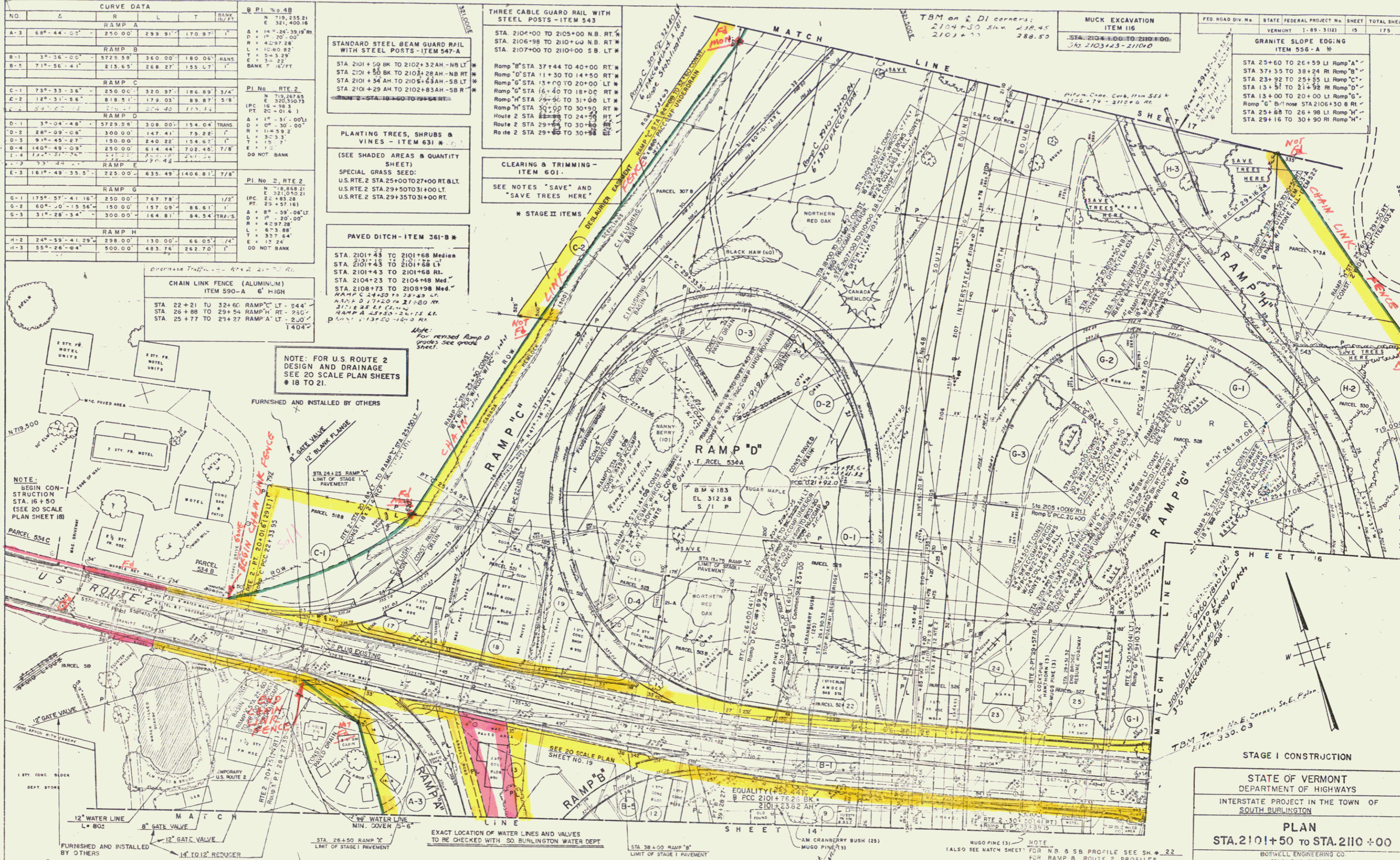
STA 2106+00 TO 2106+00 RT
 STA 2103+43 TO 2110+00

GRANITE SLOPE EROSION ITEM 556-A *

STA 25+60 TO 26+59 LI Ramp "A" *
 STA 37+35 TO 38+24 RI Ramp "B" *
 STA 23+92 TO 25+55 LI Ramp "C" *
 STA 13+31 TO 21+52 RI Ramp "D" *
 STA 13+00 TO 20+00 LI Ramp "G" *
 Ramp "G" B¹ nose STA 2106+30 B RI *
 STA 25+68 TO 26+98 LI Ramp "H" *
 STA 29+16 TO 30+50 RI Ramp "H" *

FED. ROAD DIV. NO.	STATE	FEDERAL PROJECT NO.	SHEET	TOTAL SHEETS
	VERMONT	1-89-3(12)	15	175

DATE	BY	REVISION
		1. PLAN
		2. CHECKED
		3. APPROVED



STAGE I CONSTRUCTION

STATE OF VERMONT
 DEPARTMENT OF HIGHWAYS

INTERSTATE PROJECT IN THE TOWN OF
 SOUTH BURLINGTON

PLAN
 STA. 2101+50 TO STA. 2110+00

BOSWELL ENGINEERING CO.
 CONSULTING ENGINEERS
 RIDGEFIELD PARK, N.J.

PROJECT NO. 1-89-3(12) SHEET 15 OF 175

189-3(12) STAGE 2 CONSTRUCTION SHEET 31 OF 156

Con & Row 31