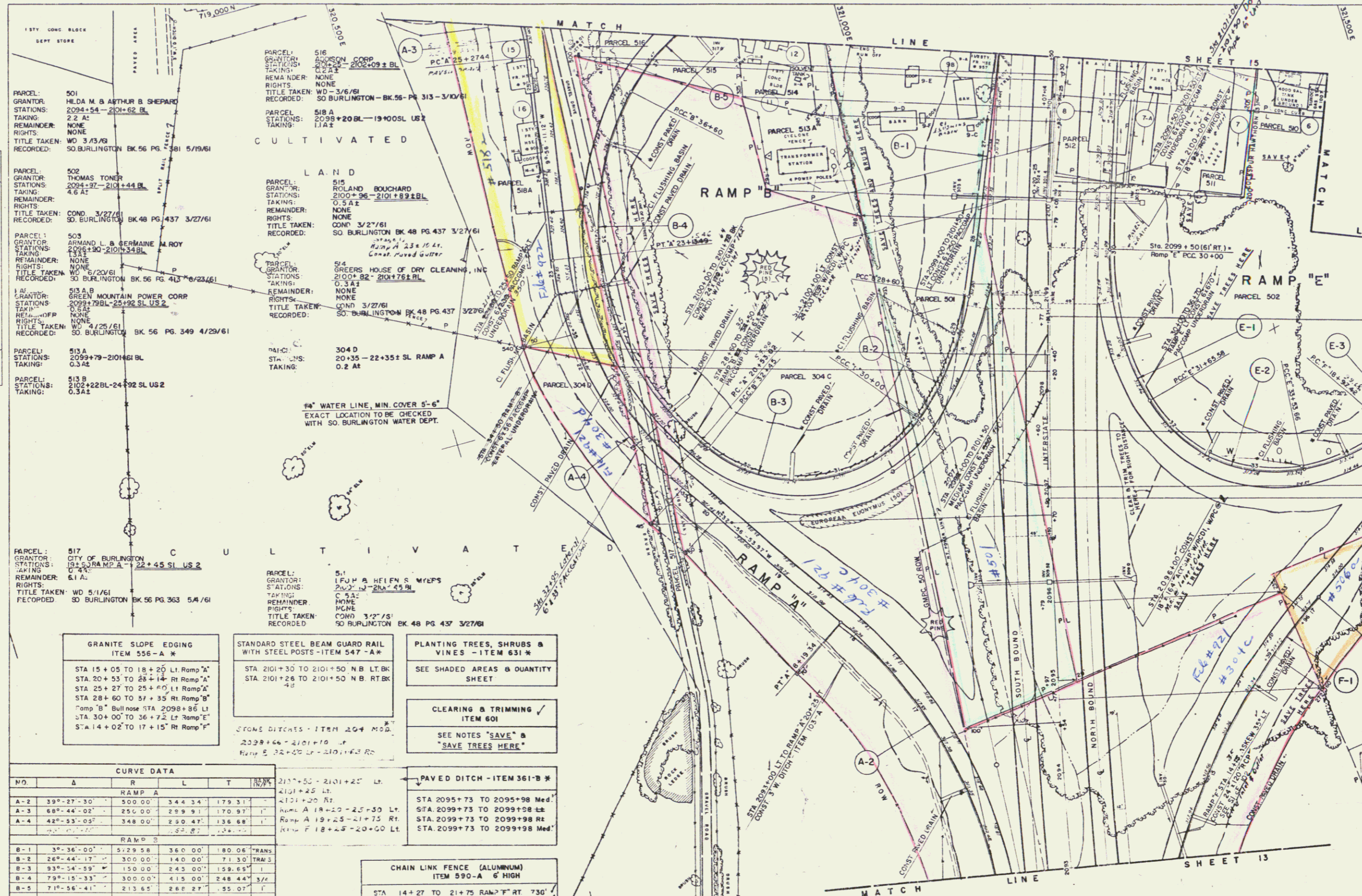


MUCK EXCAVATION ITEM 116
 ML 2091+0 TO 2098+0

Ramps
 B 29+55 - 30+34
 C 32+15 - 36+25
 F 14+50 - 18+50
 G 13+70 - 16+70
 H 23+50 - 24+67

PLAN	DATE
DESIGNED	
CHECKED	
BY	
DATE	
BY	
DATE	
BY	
DATE	



GRANITE SLOPE EDGING
 ITEM 556-A *

STA 15+05 TO 18+20 LI Ramp "A"
 STA 20+55 TO 23+14 RI Ramp "A"
 STA 25+27 TO 25+60 LI Ramp "A"
 STA 28+60 TO 31+35 RI Ramp "B"
 STA 30+00 TO 36+25 LI Ramp "C"
 STA 14+02 TO 17+15 RI Ramp "F"

STANDARD STEEL BEAM GUARD RAIL
 WITH STEEL POSTS - ITEM 547-A *

STA 2101+30 TO 2101+50 NB LT BK
 STA 2101+26 TO 2101+50 NB RT BK

PLANTING TREES, SHRUBS & VINES - ITEM 631 *

SEE SHADED AREAS & QUANTITY SHEET

CLEARING & TRIMMING - ITEM 601

SEE NOTES "SAVE" & "SAVE TREES HERE"

CURVE DATA

NO.	Δ	R	L	T	PC	PT	PI	PT	PC
RAMP A									
A-2	39°-27'-30"	300.00	344.34	179.31	4101+25 LI	4121+20 RI	4121+20 RI	4121+20 RI	4121+20 RI
A-3	68°-44'-02"	250.00	299.91	170.97	4121+20 RI	4141+25 LI	4141+25 LI	4141+25 LI	4141+25 LI
A-4	42°-53'-05"	348.00	250.47	136.68	4141+25 LI	4161+30 RI	4161+30 RI	4161+30 RI	4161+30 RI
RAMP B									
B-1	3°-36'-00"	5129.58	360.00	180.06	2095+73 Med	2095+98 Med	2095+98 Med	2095+98 Med	2095+98 Med
B-2	26°-44'-17"	300.00	140.00	71.30	2095+98 Med	2095+98 Med	2095+98 Med	2095+98 Med	2095+98 Med
B-3	93°-54'-59"	150.00	243.00	159.65	2095+98 Med	2095+98 Med	2095+98 Med	2095+98 Med	2095+98 Med
B-4	73°-15'-33"	300.00	415.00	248.44	2095+98 Med	2095+98 Med	2095+98 Med	2095+98 Med	2095+98 Med
B-5	71°-56'-41"	213.65	268.27	155.07	2095+98 Med	2095+98 Med	2095+98 Med	2095+98 Med	2095+98 Med
RAMP F									
F-1	31°-37'-25.5"	300.00	165.88	84.96	14+27 TO 21+75 RAMP "F" RT 730'	14+27 TO 21+75 RAMP "F" RT 730'	14+27 TO 21+75 RAMP "F" RT 730'	14+27 TO 21+75 RAMP "F" RT 730'	14+27 TO 21+75 RAMP "F" RT 730'
F-2	22°-00'-00"	300.00	188.08	108.67	25+77 TO 15+16 RAMP "F" LI 1807'	25+77 TO 15+16 RAMP "F" LI 1807'	25+77 TO 15+16 RAMP "F" LI 1807'	25+77 TO 15+16 RAMP "F" LI 1807'	25+77 TO 15+16 RAMP "F" LI 1807'
F-3	161°-49'-35.5"	225.05	635.49	1408.51					

STONE DITCHES - ITEM 204 MOD.

209+66 - 210+10 LI
 Ramp B 32+05 LI - 210+45 RI

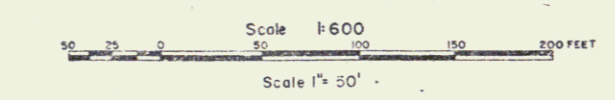
PAVED DITCH - ITEM 361-B *

211+50 - 210+25 LI
 4101+25 LI

CHAIN LINK FENCE (ALUMINUM)
 ITEM 590-A 6 HIGH

STA 14+27 TO 21+75 RAMP "F" RT 730'
 STA 25+77 TO 15+16 RAMP "F" LI 1807'

* STAGE II ITEMS



STAGE I CONSTRUCTION

STATE OF VERMONT
 DEPARTMENT OF HIGHWAYS
 INTERSTATE PROJECT IN THE TOWN OF
 SOUTH BURLINGTON

PLAN
 STA. 2093+0 TO STA. 2101+50

BOWELL ENGINEERING CO.
 CONSULTING ENGINEERS
 RUSSELL PARK, N.J.

199-3(18)
 STAGE 2 CONSTRUCTION
 SHEET 30 OF 154

PROJECT NO. I-89-3 (12) SHEET 14A OF 175

0.18 At
 File # 939
 stop at to Campbell
 Ronald E.
 SP64
 QCD 7/14/61
 BK? Pg.?