

THREE CABLE GUARD RAIL WITH STEEL POST-ITEM 343
 STA 1906+29 TO STA 1907+43 NB RTBLT
 STA 1908+61 TO STA 1909+28 SB RTBLT
 STA 1908+44 TO STA 1909+42 SB RTBLT

MUCK EXCAVATION ITEM 116
 STA 1904+00 TO STA 1905+00 NB
 STA 1904+00 TO STA 1905+00 SB

DRILLING & BLASTING OF SOLID ROCK SUBGRADE MOD ITEM 114
 STA 1900+00 TO STA 1903+88 S.B
 85

PAVED DITCH - ITEM 361-B
 STA 1900+59 TO 1900+84 NB LT
 STA 1900+73 TO 1900+98 SB LT
 STA 1913+02 TO 1913+22 NB LT
 STA 1902+23 TO 1902+53 SB RT
 STA 1902+15 TO 1902+35 SB RT

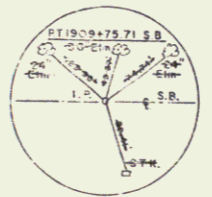
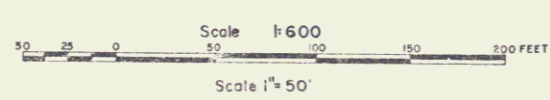
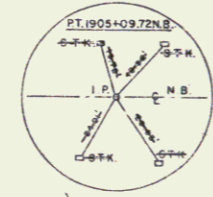
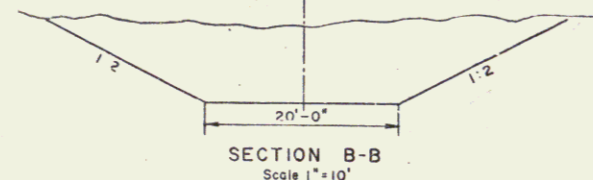
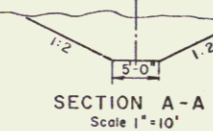
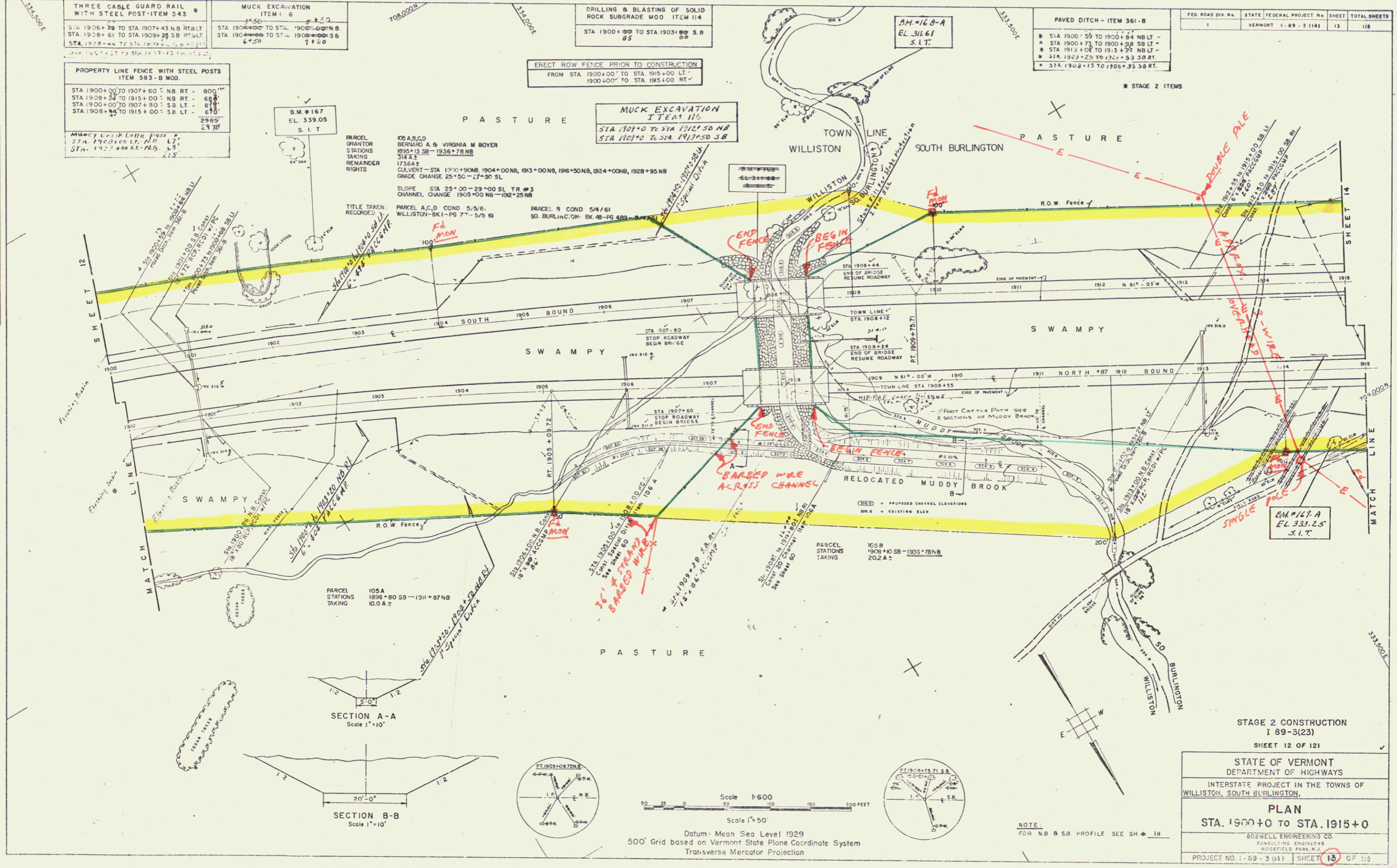
FED ROAD DIV NO.	STATE	FEDERAL PROJECT NO.	SHEET	TOTAL SHEETS
1	VERMONT	1-89-3 (14)	13	118

PROPERTY LINE FENCE WITH STEEL POSTS ITEM 583-B MOD.
 STA 1900+00 TO 1907+60 NB RT - 800'
 STA 1908+28 TO 1915+00 NB RT - 68'
 STA 1900+00 TO 1907+80 SB LT - 878'
 STA 1908+28 TO 1915+00 SB LT - 670'

ERECT ROW FENCE PRIOR TO CONSTRUCTION
 FROM STA. 1900+00 TO STA. 1915+00 LT
 1900+00 TO STA. 1915+00 RT

MUCK EXCAVATION ITEM 116
 STA 1907+10 TO STA 1907+50 NB
 STA 1907+10 TO STA 1907+50 SB

PLAN	ITEMS	DATE	BY	CHKD



NOTE:
 FOR NB & SB PROFILE SEE SH. 18

STAGE 2 CONSTRUCTION
 I 89-3(23)
 SHEET 12 OF 121

STATE OF VERMONT
 DEPARTMENT OF HIGHWAYS
 INTERSTATE PROJECT IN THE TOWNS OF
 WILLISTON, SOUTH BURLINGTON

PLAN
 STA. 1900+0 TO STA. 1915+0

BOSWELL ENGINEERING CO.
 CONSULTING ENGINEERS
 RUSSELL PARK, N.J.

PROJECT NO. 1-89-3 (14) SHEET 13 OF 118

STAGE 1 C (TRACT 1)

const + Roa 6