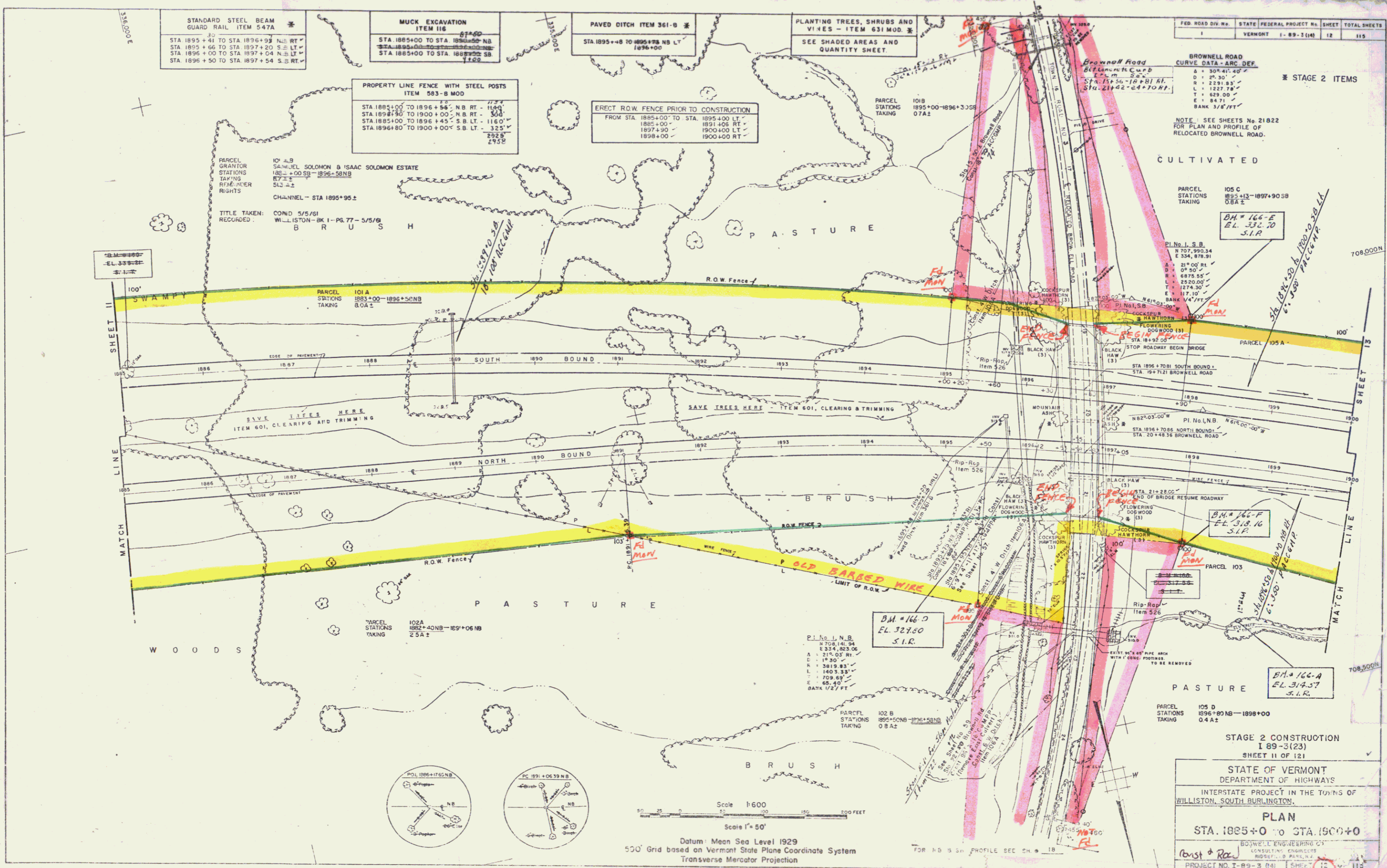


DATE	BY
REVISED	CHECKED
DATE	BY
DATE	BY
DATE	BY
DATE	BY
DATE	BY
DATE	BY
DATE	BY
DATE	BY
DATE	BY



FED. ROAD DIV. NO.	STATE	FEDERAL PROJECT NO.	SHEET	TOTAL SHEETS
1	VERMONT	I-89-3(23)	12	115

BROWNELL ROAD
 CURVE DATA - ARC DEF
 A = 30° 41' 40"
 D = 25.30'
 E = 2391.85'
 L = 1227.78'
 T = 629.00'
 E = 84.71'
 BANK 3/8'/FT

NOTE - SEE SHEETS No 21822 FOR PLAN AND PROFILE OF RELOCATED BROWNELL ROAD.

CULTIVATED

PARCEL STATIONS TAKING 105 C 1895+13-1897+90 SB 08A Z

PL No. I, S.B.
 N 107° 59' 34"
 E 334.876 34'
 S 21° 00' 00"
 R = 4875.55'
 L = 2520.00'
 T = 274.30'
 E = 17.10'

PL No. I, S.B.
 N 107° 59' 34"
 E 334.876 34'
 S 21° 00' 00"
 R = 4875.55'
 L = 2520.00'
 T = 274.30'
 E = 17.10'

PL No. I, S.B.
 N 107° 59' 34"
 E 334.876 34'
 S 21° 00' 00"
 R = 4875.55'
 L = 2520.00'
 T = 274.30'
 E = 17.10'

PL No. I, S.B.
 N 107° 59' 34"
 E 334.876 34'
 S 21° 00' 00"
 R = 4875.55'
 L = 2520.00'
 T = 274.30'
 E = 17.10'

PL No. I, S.B.
 N 107° 59' 34"
 E 334.876 34'
 S 21° 00' 00"
 R = 4875.55'
 L = 2520.00'
 T = 274.30'
 E = 17.10'

PL No. I, S.B.
 N 107° 59' 34"
 E 334.876 34'
 S 21° 00' 00"
 R = 4875.55'
 L = 2520.00'
 T = 274.30'
 E = 17.10'

PL No. I, S.B.
 N 107° 59' 34"
 E 334.876 34'
 S 21° 00' 00"
 R = 4875.55'
 L = 2520.00'
 T = 274.30'
 E = 17.10'

PL No. I, S.B.
 N 107° 59' 34"
 E 334.876 34'
 S 21° 00' 00"
 R = 4875.55'
 L = 2520.00'
 T = 274.30'
 E = 17.10'

PL No. I, S.B.
 N 107° 59' 34"
 E 334.876 34'
 S 21° 00' 00"
 R = 4875.55'
 L = 2520.00'
 T = 274.30'
 E = 17.10'

PL No. I, S.B.
 N 107° 59' 34"
 E 334.876 34'
 S 21° 00' 00"
 R = 4875.55'
 L = 2520.00'
 T = 274.30'
 E = 17.10'

PL No. I, S.B.
 N 107° 59' 34"
 E 334.876 34'
 S 21° 00' 00"
 R = 4875.55'
 L = 2520.00'
 T = 274.30'
 E = 17.10'

PL No. I, S.B.
 N 107° 59' 34"
 E 334.876 34'
 S 21° 00' 00"
 R = 4875.55'
 L = 2520.00'
 T = 274.30'
 E = 17.10'

PL No. I, S.B.
 N 107° 59' 34"
 E 334.876 34'
 S 21° 00' 00"
 R = 4875.55'
 L = 2520.00'
 T = 274.30'
 E = 17.10'

PL No. I, S.B.
 N 107° 59' 34"
 E 334.876 34'
 S 21° 00' 00"
 R = 4875.55'
 L = 2520.00'
 T = 274.30'
 E = 17.10'

PL No. I, S.B.
 N 107° 59' 34"
 E 334.876 34'
 S 21° 00' 00"
 R = 4875.55'
 L = 2520.00'
 T = 274.30'
 E = 17.10'

PL No. I, S.B.
 N 107° 59' 34"
 E 334.876 34'
 S 21° 00' 00"
 R = 4875.55'
 L = 2520.00'
 T = 274.30'
 E = 17.10'

PL No. I, S.B.
 N 107° 59' 34"
 E 334.876 34'
 S 21° 00' 00"
 R = 4875.55'
 L = 2520.00'
 T = 274.30'
 E = 17.10'

PL No. I, S.B.
 N 107° 59' 34"
 E 334.876 34'
 S 21° 00' 00"
 R = 4875.55'
 L = 2520.00'
 T = 274.30'
 E = 17.10'

PL No. I, S.B.
 N 107° 59' 34"
 E 334.876 34'
 S 21° 00' 00"
 R = 4875.55'
 L = 2520.00'
 T = 274.30'
 E = 17.10'

PL No. I, S.B.
 N 107° 59' 34"
 E 334.876 34'
 S 21° 00' 00"
 R = 4875.55'
 L = 2520.00'
 T = 274.30'
 E = 17.10'

PL No. I, S.B.
 N 107° 59' 34"
 E 334.876 34'
 S 21° 00' 00"
 R = 4875.55'
 L = 2520.00'
 T = 274.30'
 E = 17.10'

PL No. I, S.B.
 N 107° 59' 34"
 E 334.876 34'
 S 21° 00' 00"
 R = 4875.55'
 L = 2520.00'
 T = 274.30'
 E = 17.10'

PL No. I, S.B.
 N 107° 59' 34"
 E 334.876 34'
 S 21° 00' 00"
 R = 4875.55'
 L = 2520.00'
 T = 274.30'
 E = 17.10'

PL No. I, S.B.
 N 107° 59' 34"
 E 334.876 34'
 S 21° 00' 00"
 R = 4875.55'
 L = 2520.00'
 T = 274.30'
 E = 17.10'

PL No. I, S.B.
 N 107° 59' 34"
 E 334.876 34'
 S 21° 00' 00"
 R = 4875.55'
 L = 2520.00'
 T = 274.30'
 E = 17.10'

PL No. I, S.B.
 N 107° 59' 34"
 E 334.876 34'
 S 21° 00' 00"
 R = 4875.55'
 L = 2520.00'
 T = 274.30'
 E = 17.10'

PL No. I, S.B.
 N 107° 59' 34"
 E 334.876 34'
 S 21° 00' 00"
 R = 4875.55'
 L = 2520.00'
 T = 274.30'
 E = 17.10'

PL No. I, S.B.
 N 107° 59' 34"
 E 334.876 34'
 S 21° 00' 00"
 R = 4875.55'
 L = 2520.00'
 T = 274.30'
 E = 17.10'

PL No. I, S.B.
 N 107° 59' 34"
 E 334.876 34'
 S 21° 00' 00"
 R = 4875.55'
 L = 2520.00'
 T = 274.30'
 E = 17.10'

PL No. I, S.B.
 N 107° 59' 34"
 E 334.876 34'
 S 21° 00' 00"
 R = 4875.55'
 L = 2520.00'
 T = 274.30'
 E = 17.10'

PL No. I, S.B.
 N 107° 59' 34"
 E 334.876 34'
 S 21° 00' 00"
 R = 4875.55'
 L = 2520.00'
 T = 274.30'
 E = 17.10'

PL No. I, S.B.
 N 107° 59' 34"
 E 334.876 34'
 S 21° 00' 00"
 R = 4875.55'
 L = 2520.00'
 T = 274.30'
 E = 17.10'

PL No. I, S.B.
 N 107° 59' 34"
 E 334.876 34'
 S 21° 00' 00"
 R = 4875.55'
 L = 2520.00'
 T = 274.30'
 E = 17.10'

STAGE 2 CONSTRUCTION
 I 89-3(23)
 SHEET 11 OF 121

STATE OF VERMONT
 DEPARTMENT OF HIGHWAYS

INTERSTATE PROJECT IN THE TOWNS OF
 WILLISTON, SOUTH BURLINGTON.

PLAN
 STA. 1885+00 TO STA. 1900+00

BOYDELL ENGINEERING CO.
 CONSULTING ENGINEERS
 100 STATE ST. BURLINGTON, VT.

PROJECT NO. I-89-3(23) SHEET 11 OF 121

STAGE 2 CONTRACT 1

3