

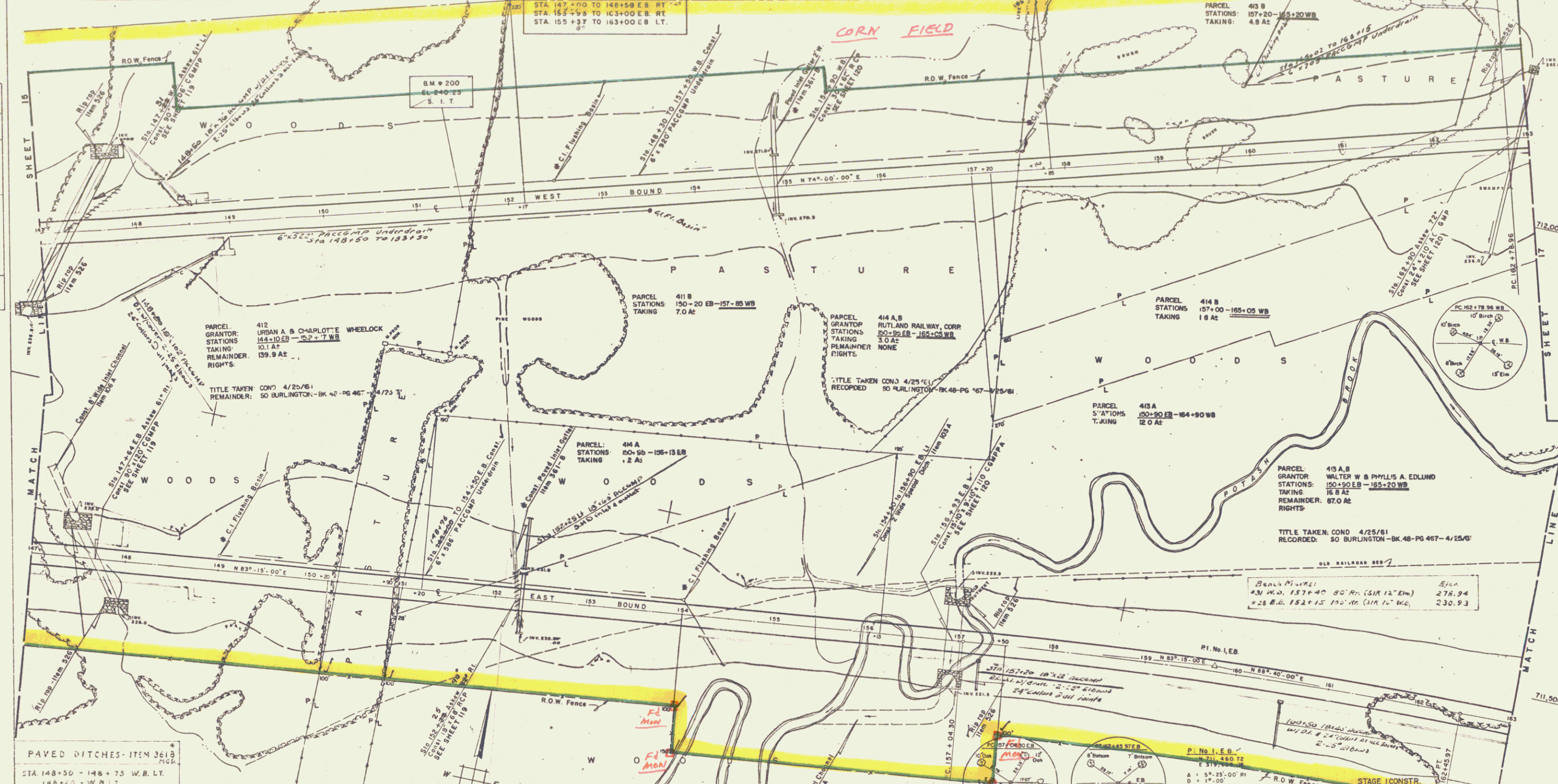
PROPERTY LINE FENCE WITH STEEL POSTS ITEM 583-B
 STA 147+00 TO 163+00 W.B.L.T. - 1670'
 STA 147+00 TO 163+00 E.B.R.T. - 1705'
 3375'

R.O.W. FENCE ERECTED PRIOR TO CONSTRUCTION
 STA 147+00 TO 150+20 EB
 147+00 152+17 WB

THREE CABLE GUARD RAIL WITH STEEL POSTS-ITEM 543
 STA 147+00 TO 148+40 WB LT.BRT
 STA 148+40 TO 163+00 WB RT
 STA 147+00 TO 148+00 E.B.L.T.
 STA 147+00 TO 148+50 E.B.R.T.
 STA 148+50 TO 163+00 E.B.R.E.
 STA 155+37 TO 163+00 E.B.L.T.

MUCK EXCAVATION-ITEM 116
 STA 161+00 TO 163+00 E.B.

FED. ROAD DIV. No. STATE FEDERAL PROJECT No. SHEET TOTAL SHEETS
 1 VERMONT 1-189-3(11) 200



PLAN	CONSTRUCTED	AS SHOWN
REVISIONS	DATE	BY
NO. 1		
NO. 2		
NO. 3		
NO. 4		
NO. 5		
NO. 6		
NO. 7		
NO. 8		
NO. 9		
NO. 10		
NO. 11		
NO. 12		
NO. 13		
NO. 14		
NO. 15		
NO. 16		
NO. 17		
NO. 18		
NO. 19		
NO. 20		
NO. 21		
NO. 22		
NO. 23		
NO. 24		
NO. 25		
NO. 26		
NO. 27		
NO. 28		
NO. 29		
NO. 30		
NO. 31		
NO. 32		
NO. 33		
NO. 34		
NO. 35		
NO. 36		
NO. 37		
NO. 38		
NO. 39		
NO. 40		
NO. 41		
NO. 42		
NO. 43		
NO. 44		
NO. 45		
NO. 46		
NO. 47		
NO. 48		
NO. 49		
NO. 50		
NO. 51		
NO. 52		
NO. 53		
NO. 54		
NO. 55		
NO. 56		
NO. 57		
NO. 58		
NO. 59		
NO. 60		
NO. 61		
NO. 62		
NO. 63		
NO. 64		
NO. 65		
NO. 66		
NO. 67		
NO. 68		
NO. 69		
NO. 70		
NO. 71		
NO. 72		
NO. 73		
NO. 74		
NO. 75		
NO. 76		
NO. 77		
NO. 78		
NO. 79		
NO. 80		
NO. 81		
NO. 82		
NO. 83		
NO. 84		
NO. 85		
NO. 86		
NO. 87		
NO. 88		
NO. 89		
NO. 90		
NO. 91		
NO. 92		
NO. 93		
NO. 94		
NO. 95		
NO. 96		
NO. 97		
NO. 98		
NO. 99		
NO. 100		

PAVED DITCHES-ITEM 3613
 STA 148+50 - 148+75 W.B.L.T.
 148+75 - W.B.L.T.
 148+75 - 149+00 W.B.R.T.
 149+00 - 149+20 W.B.R.T.
 149+20 - 149+50 E.B.L.T.
 149+50 - E.B.L.T.
 149+50 - E.B.R.T.
 154+00 E.B.R.T.

BIT. CONC. CURB-ITEM 555
 STA 147+0 - 148+92 W.B.R.T.
 147+0 - 148+40 W.B.L.T.
 148+40 - 148+60 W.B.R.T.
 148+60 - 149+00 W.B.R.T.
 149+00 - 149+50 E.B.L.T.
 149+50 - 149+60 E.B.R.T.
 149+60 - 150+00 E.B.L.T.

Scale 1"=50'
 Scale 1"=600'
 Datum: Mean Sea Level 1929
 500' Grid based on Vermont State Plane Coordinate System
 Transverse Mercator Projection

189-3(16), 189-3(17)
 STAGE 2 CONSTRUCTION
 SHEET 47 OF 167

NOTE:
 FOR E.B. & W.B. PROFILE SEE SH. 4-21

STATE OF VERMONT
 DEPARTMENT OF HIGHWAYS
 INTERSTATE PROJECT IN THE CITY OF
 BURLINGTON AND TOWN OF SOUTH BURLINGTON
PLAN
SHELBURNE CONNECTION
STA. 147+0 TO STA. 163+0
 BOSWELL ENGINEERING CO.
 CONSULTING ENGINEERS
 BOSTFIELD PARK, N.J.
 PROJECT NO. 189-3(11) SHEET 6 OF 200

I 189 10