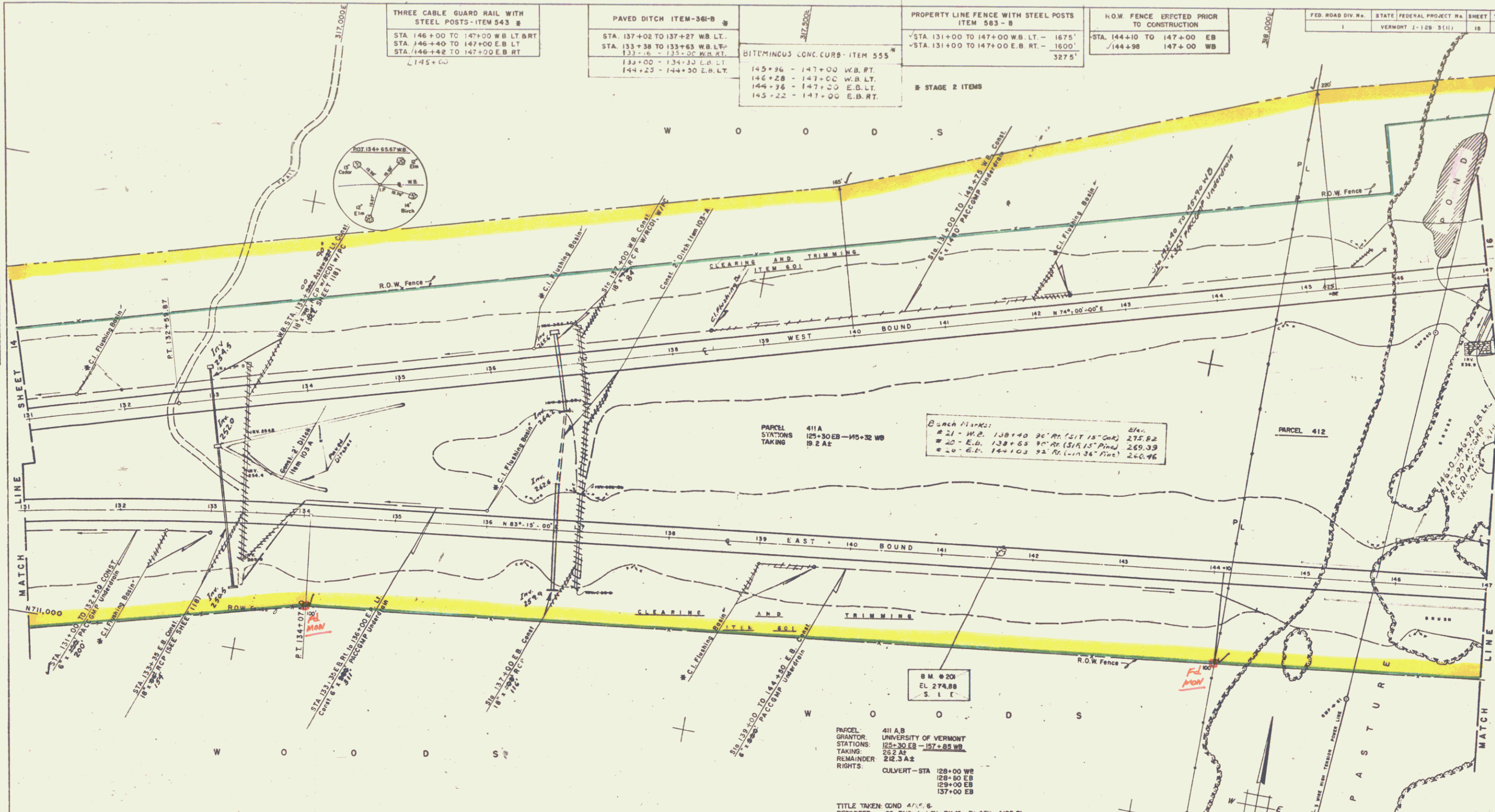


PLAN SHEETED BY DATE
 CHECKED BY DATE
 DESIGNED BY DATE
 DRAWN BY DATE
 IN CHARGE BY DATE



THREE CABLE GUARD RAIL WITH STEEL POSTS - ITEM 543 - B STA. 146+00 TO 147+00 WB LT. & RT. STA. 146+40 TO 147+00 E.B. LT. STA. 146+42 TO 147+00 E.B. RT. L145+00	PAVED DITCH ITEM-361-B STA. 137+02 TO 137+27 WB. LT. STA. 133+38 TO 133+63 WB. LT. 133+6 - 133+00 W.B. RT. 133+00 - 134+30 E.B. LT. 144+25 - 144+50 E.B. LT.	PROPERTY LINE FENCE WITH STEEL POSTS ITEM 583 - B STA. 131+00 TO 147+00 WB. LT. - 1675' STA. 131+00 TO 147+00 E.B. RT. - 1600' 3275'	H.O.W. FENCE ERECTED PRIOR TO CONSTRUCTION STA. 144+10 TO 147+00 EB /144+98 147+00 WB
--	--	--	--

FED. ROAD DIV. No.	STATE	FEDERAL PROJECT No.	SHEET	TOTAL SHEETS
1	VERMONT	2-128-3(11)	15	200

Corner Marks:

# 21 - W.C. 138+40	21' 15" ON 15' ON	275.82
# 20 - E.B. 138+65	9' ON 15' ON	269.39
# 19 - E.C. 144+03	22' ON 15' ON	260.96

PARCEL 411A
 GRANTOR: UNIVERSITY OF VERMONT
 STATIONS: 125+30 EB - 137+85 WB
 TAKING: 212.3 A2
 REMAINDER: 212.3 A2
 RIGHTS: CULVERT - STA 128+00 WB
 129+00 EB
 129+00 EB
 137+00 EB

TITLE TAKEN COND. 4/27/66
 RECORDED: 50 BUR. P.O. BK48 - P. 45 - 4/25/66

Scale 1"=50'
 Scale 1"=600'
 Datum: Mean Sea Level 1929
 500' Grid based on Vermont State Plane Coordinate System
 Transverse Mercator Projection

189-3(16), 1189-3(7)
 STAGE 2 CONSTRUCTION
 SHEET 46 OF 167

STAGE 1 CONSTRUCTION

STATE OF VERMONT
 DEPARTMENT OF HIGHWAYS

INTERSTATE PROJECT IN THE CITY OF
 BURLINGTON AND TOWN OF SOUTH BURLINGTON

PLAN
 SHELBURNE CONNECTION
 STA 131+0 TO STA 147+0

BOSWELL ENGINEERING CO.
 CONSULTING ENGINEERS
 BOSTFIELD PARK, N.J.

PROJECT NO. 1-189-3(11) SHEET 15 OF 200

I181 9