

THREE CABLE GUARD RAIL
with STEEL POSTS Item 543
1775+00 to 1780+62.00 NB Lt.
1775+00 to 1782+56.94 SB Lt.
1775+00 to 1779+54.20 NB Lt.
1775+00 to 1780+56.06 SB Lt.

STONE WALL FOR SLOPE PROTECTION
1773+10
1775+25 - 1775+30

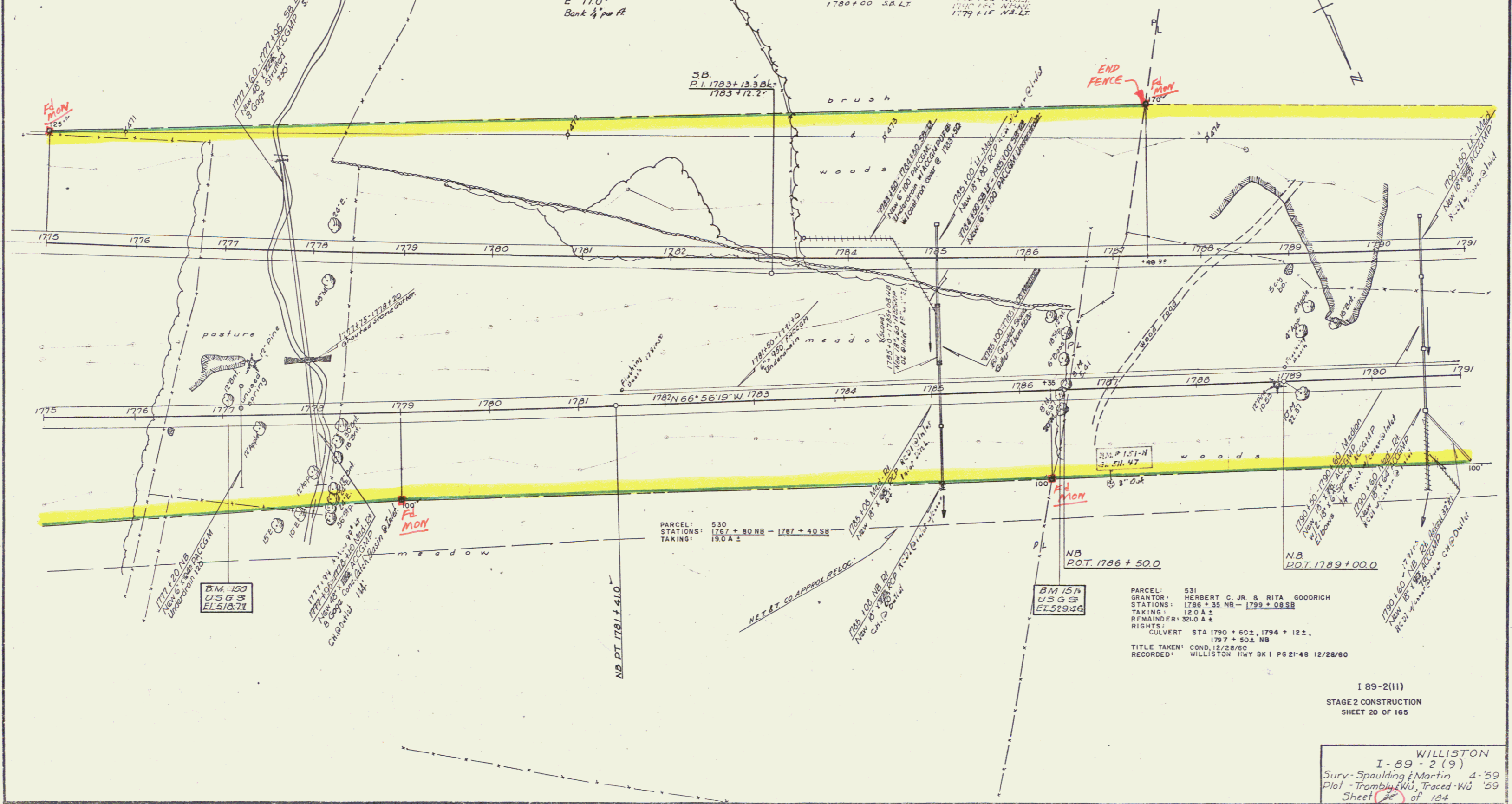
DRILLING AND BLASTING OF SOLID
ROCK SUBGRADE - ITEM 114 Mod
1784.10
SB 1781+00 - 1782+50.25
NB 1782+50 - 1791+00
SB 1785+58 - 1791+00

Bituminous Concrete Curb, Item 555
1775+00 - 1779+50 SB Lt.
1775+00 - 1779+76 NB Lt.

Property Line Fence, Item 583 B, Mod
1775+00 - 1783+30 SB Lt.
1775+00 - 1786+30 NB Lt.
1791+00

SB Curve Data
Δ 4° 25' 00" Lt.
D 0° 15' 1"
R 22318.8
T 883.9
L 1766.7
E 170'
Bank 4' per ft

BITUMINOUS CONCRETE SURFACE
FOR PAVEMENT AND TRAFFIC ISLANDS -
ITEM 552
1785+00 SB Lt. 1785+00 NB Lt.
1790+00 SB Lt. 1785+00 NB Lt.
1790+00 SB Lt. 1790+00 NB Lt.
1780+00 SB Lt. 1779+15 NB Lt.



PARCEL: 530
STATIONS: 1767+80 NB - 1787+40 SB
TAKING: 19.0 A ±

PARCEL: 531
GRANTOR: HERBERT C. JR. & RITA GOODRICH
STATIONS: 1786+35 NB - 1799+08 SB
TAKING: 12.0 A ±
REMAINDER: 32.0 A ±
RIGHTS: CULVERT STA 1790+60 ±, 1794+12 ±,
1797+50 ± NB
TITLE TAKEN: COND. 12/28/60
RECORDED: WILLISTON HWY BK 1 PG 21-48 12/28/60

I 89-2(11)
STAGE 2 CONSTRUCTION
SHEET 20 OF 165

WILLISTON
I-89-2(9)
Surv: Spaulding & Martin 4-59
Plot: Trombly & WU, Traced WU '59
Sheet 20 of 184
CONTRACT III