

THREE CABLE GUARD RAIL with STEEL POSTS, Item 543
 1722+22 to 1727+00 SB Lt.
 1722+22 to 1727+00 SB Lt.
 1723+34 to 1727+00 NB Lt.
 1723+34 to 1727+00 NB Lt.

TWO CABLE GUARD RAIL, Item 542
 Frontage Road 11+52 to 11+52
 11+52 to 13+96 Lt.
 11+52 to 14+16 Lt.
 11+52

Property Line Fence, Item 543 B, Mod
 1711+00' - 1727+00' SB Lt.
 1712+37' - 1727+00' NB Lt.

Chain Link Fence, Item 541-A
 1711+00' - 1712+37' NB Lt.

Plank Guard Rail Preservative Treatment, Item 541-A
 1712+75 NB Lt.
 1713+80 SB Lt.

CONSTRUCT U-TURN
 1713+38 NB - 1713+10 SB
 1713+38 1713+10

Fr. Rd. P.I. 23+76.4
 20+90.2
 Δ 100°56' Rt.
 D 150'

PARCEL: 520 A
 STATIONS: 1690+90 NB - 1713+40 SB
 TAKING: 18.7 A±
 1716.5 SB - 1712+96 NB
 3" x 3/8" GALV. IRON SLEEVES
 100' (TEL. Co.)

* Trees not located in notes
 Position estimated from
 Topo notes

G.N.P. CORR. REPLACE
 10' TALLER POLE

SB
 POT 1713+500

Chain Link Fence
 Item 541-A

Chain Link Fence
 Item 541-A

Chain Link Fence
 Item 541-A

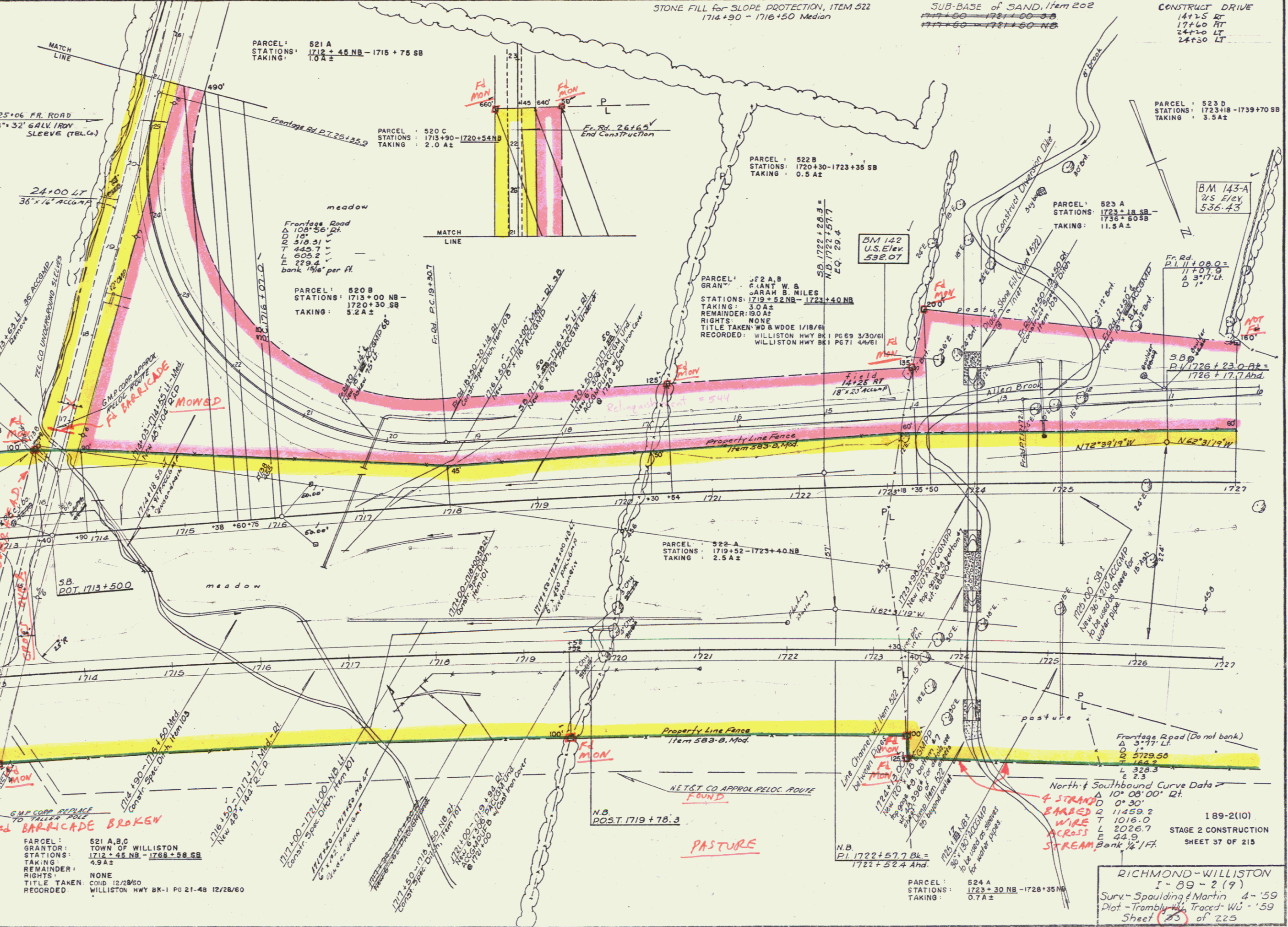
Chain Link Fence
 Item 541-A

Chain Link Fence
 Item 541-A

Chain Link Fence
 Item 541-A

Chain Link Fence
 Item 541-A

Chain Link Fence
 Item 541-A



PARCEL: 521 A,B,C
 GRANTEE: TOWN OF WILLISTON
 STATIONS: 1712+45 NB - 1768+56 SB
 TAKING: 4.9 A±
 REMAINDER: NONE
 RIGHTS: COND. 12/28/60
 TITLE TAKEN: WILLISTON HWY BK-1 PG 21-48 12/28/60
 RECORDED:

FRONTAGE ROAD
 Δ 100°56' Rt.
 D 150'
 L 318.31
 T 445.7
 E 605.2
 L 229.4

FRONTAGE ROAD
 Δ 100°56' Rt.
 D 150'
 L 318.31
 T 445.7
 E 605.2
 L 229.4

FRONTAGE ROAD
 Δ 100°56' Rt.
 D 150'
 L 318.31
 T 445.7
 E 605.2
 L 229.4

FRONTAGE ROAD
 Δ 100°56' Rt.
 D 150'
 L 318.31
 T 445.7
 E 605.2
 L 229.4

FRONTAGE ROAD
 Δ 100°56' Rt.
 D 150'
 L 318.31
 T 445.7
 E 605.2
 L 229.4

FRONTAGE ROAD
 Δ 100°56' Rt.
 D 150'
 L 318.31
 T 445.7
 E 605.2
 L 229.4

NET & T CO. APPROX. PELOC. ROUTE
 FOUND

PASTURE

North & Southbound Curve Data
 Δ 10° 08' 00" Rt.
 RADIUS 1125.0
 CHORD 211.25
 TANGENT 1016.0
 L 2026.7
 E 44.9
 M 12.17

STAGE 2 CONSTRUCTION
 SHEET 37 OF 215

RICHMOND-WILLISTON
 I-89-2(9)
 Surv. Spaulding & Martin 4-'59
 Plot - Trambly & Traced - W.G. - '59
 Sheet 23 of 225

CONTRACT II
 cons by R.C. 15

FRONTAGE ROAD
 Δ 100°56' Rt.
 D 150'
 L 318.31
 T 445.7
 E 605.2
 L 229.4

FRONTAGE ROAD
 Δ 100°56' Rt.
 D 150'
 L 318.31
 T 445.7
 E 605.2
 L 229.4

FRONTAGE ROAD
 Δ 100°56' Rt.
 D 150'
 L 318.31
 T 445.7
 E 605.2
 L 229.4

FRONTAGE ROAD
 Δ 100°56' Rt.
 D 150'
 L 318.31
 T 445.7
 E 605.2
 L 229.4

FRONTAGE ROAD
 Δ 100°56' Rt.
 D 150'
 L 318.31
 T 445.7
 E 605.2
 L 229.4

FRONTAGE ROAD
 Δ 100°56' Rt.
 D 150'
 L 318.31
 T 445.7
 E 605.2
 L 229.4

FRONTAGE ROAD
 Δ 100°56' Rt.
 D 150'
 L 318.31
 T 445.7
 E 605.2
 L 229.4

FRONTAGE ROAD
 Δ 100°56' Rt.
 D 150'
 L 318.31
 T 445.7
 E 605.2
 L 229.4

FRONTAGE ROAD
 Δ 100°56' Rt.
 D 150'
 L 318.31
 T 445.7
 E 605.2
 L 229.4

FRONTAGE ROAD
 Δ 100°56' Rt.
 D 150'
 L 318.31
 T 445.7
 E 605.2
 L 229.4

FRONTAGE ROAD
 Δ 100°56' Rt.
 D 150'
 L 318.31
 T 445.7
 E 605.2
 L 229.4

FRONTAGE ROAD
 Δ 100°56' Rt.
 D 150'
 L 318.31
 T 445.7
 E 605.2
 L 229.4

FRONTAGE ROAD
 Δ 100°56' Rt.
 D 150'
 L 318.31
 T 445.7
 E 605.2
 L 229.4

FRONTAGE ROAD
 Δ 100°56' Rt.
 D 150'
 L 318.31
 T 445.7
 E 605.2
 L 229.4

FRONTAGE ROAD
 Δ 100°56' Rt.
 D 150'
 L 318.31
 T 445.7
 E 605.2
 L 229.4

FRONTAGE ROAD
 Δ 100°56' Rt.
 D 150'
 L 318.31
 T 445.7
 E 605.2
 L 229.4

FRONTAGE ROAD
 Δ 100°56' Rt.
 D 150'
 L 318.31
 T 445.7
 E 605.2
 L 229.4

FRONTAGE ROAD
 Δ 100°56' Rt.
 D 150'
 L 318.31
 T 445.7
 E 605.2
 L 229.4

FRONTAGE ROAD
 Δ 100°56' Rt.
 D 150'
 L 318.31
 T 445.7
 E 605.2
 L 229.4

FRONTAGE ROAD
 Δ 100°56' Rt.
 D 150'
 L 318.31
 T 445.7
 E 605.2
 L 229.4

FRONTAGE ROAD
 Δ 100°56' Rt.
 D 150'
 L 318.31
 T 445.7
 E 605.2
 L 229.4

FRONTAGE ROAD
 Δ 100°56' Rt.
 D 150'
 L 318.31
 T 445.7
 E 605.2
 L 229.4

FRONTAGE ROAD
 Δ 100°56' Rt.
 D 150'
 L 318.31
 T 445.7
 E 605.2
 L 229.4

FRONTAGE ROAD
 Δ 100°56' Rt.
 D 150'
 L 318.31
 T 445.7
 E 605.2
 L 229.4

FRONTAGE ROAD
 Δ 100°56' Rt.
 D 150'
 L 318.31
 T 445.7
 E 605.2
 L 229.4

FRONTAGE ROAD
 Δ 100°56' Rt.
 D 150'
 L 318.31
 T 445.7
 E 605.2
 L 229.4

FRONTAGE ROAD
 Δ 100°56' Rt.
 D 150'
 L 318.31
 T 445.7
 E 605.2
 L 229.4

FRONTAGE ROAD
 Δ 100°56' Rt.
 D 150'
 L 318.31
 T 445.7
 E 605.2
 L 229.4

FRONTAGE ROAD
 Δ 100°56' Rt.
 D 150'
 L 318.31
 T 445.7
 E 605.2
 L 229.4

FRONTAGE ROAD
 Δ 100°56' Rt.
 D 150'
 L 318.31
 T 445.7
 E 605.2
 L 229.4

FRONTAGE ROAD
 Δ 100°56' Rt.
 D 150'
 L 318.31
 T 445.7
 E 605.2
 L 229.4

FRONTAGE ROAD
 Δ 100°56' Rt.
 D 150'
 L 318.31
 T 445.7
 E 605.2
 L 229.4

FRONTAGE ROAD
 Δ 100°56' Rt.
 D 150'
 L 318.31
 T 445.7
 E 605.2
 L 229.4

FRONTAGE ROAD
 Δ 100°56' Rt.
 D 150'
 L 318.31
 T 445.7
 E 605.2
 L 229.4

FRONTAGE ROAD
 Δ 100°56' Rt.
 D 150'
 L 318.31
 T 445.7
 E 605.2
 L 229.4

FRONTAGE ROAD
 Δ 100°56' Rt.
 D 150'
 L 318.31
 T 445.7
 E 605.2
 L 229.4

FRONTAGE ROAD
 Δ 100°56' Rt.
 D 150'
 L 318.31
 T 445.7
 E 605.2
 L 229.4

FRONTAGE ROAD
 Δ 100°56' Rt.
 D 150'
 L 318.31
 T 445.7
 E 605.2
 L 229.4

FRONTAGE ROAD
 Δ 100°56' Rt.
 D 150'
 L 318.31
 T 445.7
 E 605.2
 L 229.4

FRONTAGE ROAD
 Δ 100°56' Rt.
 D 150'
 L 318.31
 T 445.7
 E 605.2
 L 229.4

FRONTAGE ROAD
 Δ 100°56' Rt.
 D 150'
 L 318.31
 T 445.7
 E 605.2
 L 229.4

FRONTAGE ROAD
 Δ 100°56' Rt.
 D 150'
 L 318.31
 T 445.7
 E 605.2
 L 229.4

FRONTAGE ROAD
 Δ 100°56' Rt.
 D 150'
 L 318.31
 T 445.7
 E 605.2
 L 229.4

FRONTAGE ROAD
 Δ 100°56' Rt.
 D 150'
 L 318.31
 T 445.7
 E 605.2
 L 229.4

FRONTAGE ROAD
 Δ 100°56' Rt.
 D 150'
 L 318.31
 T 445.7
 E 605.2
 L 229.4

FRONTAGE ROAD
 Δ 100°56' Rt.
 D 150'
 L 318.31
 T 445.7
 E 605.2
 L 229.4

FRONTAGE ROAD
 Δ 100°56' Rt.
 D 150'
 L 318.31
 T 445.7
 E 605.2
 L 229.4

FRONTAGE ROAD
 Δ 100°56' Rt.
 D 150'
 L 318.31
 T 445.7
 E 605.2
 L 229.4