

Property Line Fence Item 583 B, Mod.
 1601+00 - 1615+00 S.B. Lt.
 1601+00 - 1615+00 N.B. Rt.
 1615+50 - 1617+00 N.B. Rt.
 1615+50 - 1617+00 S.B. Lt.

SUB-BASE of SAND, ITEM 202
 1602+50
 1601+00 - 1604+00 S.B.
 1601+00 - 1604+00 N.B.
 1606+50 - 1607+50 N.B.

PAVED MEDIAN GUTTER
 1613+25 - 1613+75
 1616+25 - 1616+75

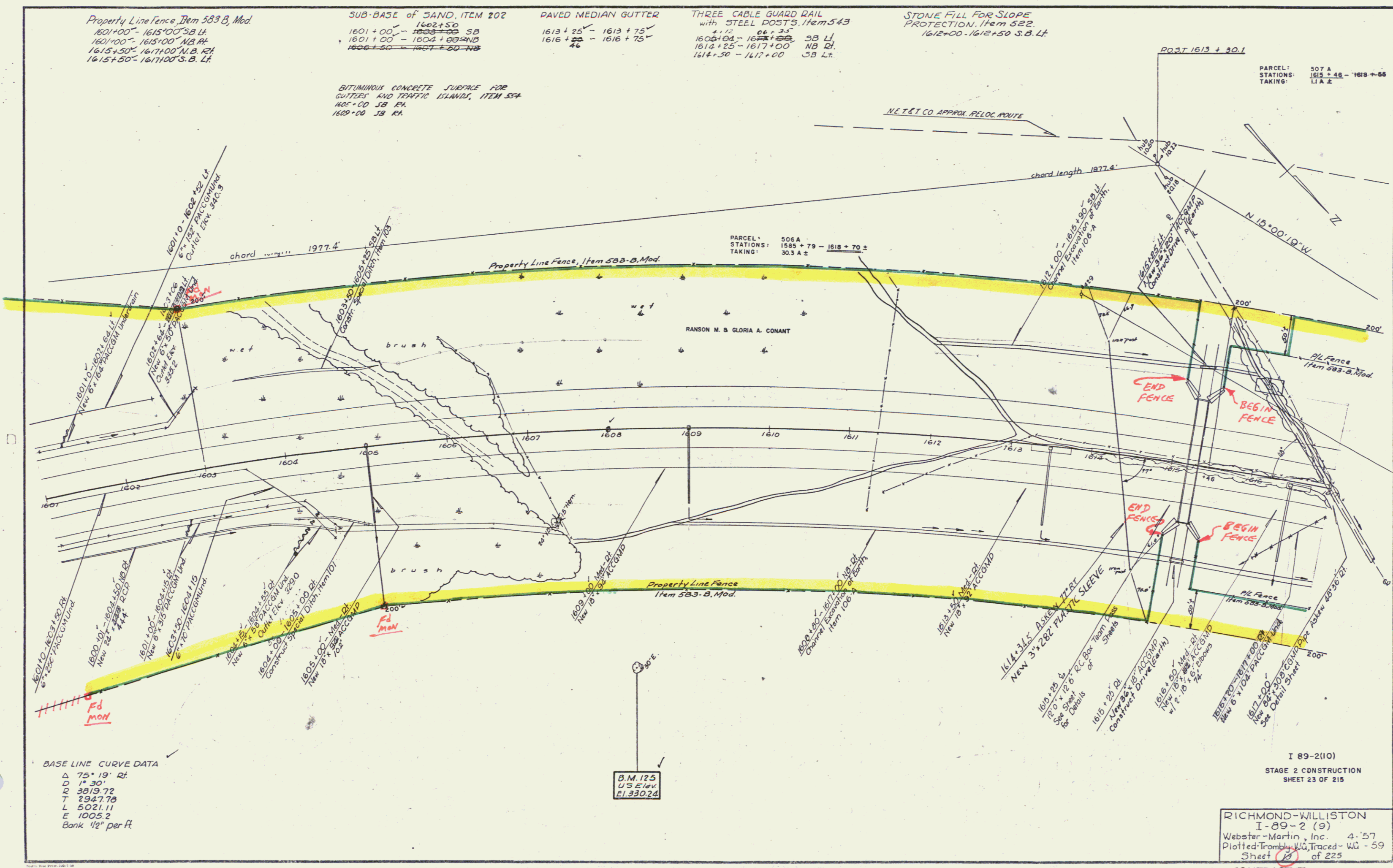
THREE CABLE GUARD RAIL
 with STEEL POSTS, Item 543
 1608+00 - 1612+00 S.B. Lt.
 1614+25 - 1617+00 N.B. Rt.
 1614+50 - 1617+00 S.B. Lt.

STONE FILL FOR SLOPE
 PROTECTION, Item 522.
 1612+00 - 1612+50 S.B. Lt.

BITUMINOUS CONCRETE SURFACE FOR
 GUTTERS AND TRAFFIC ISLANDS, ITEM 534
 1605+00 S.B. Rt.
 1609+00 S.B. Rt.

PARCEL: 507 A
 STATIONS: 1615+48 - 1618+66
 TAKING: I.A.Z.

PARCEL: 506 A
 STATIONS: 1585+79 - 1618+70 ±
 TAKING: 30.3 A ±



BASE LINE CURVE DATA
 Δ 75° 19' 21"
 D 1° 30'
 T 3019.72
 T 2347.78
 L 5021.11
 E 1005.2
 Bank 1/2" per ft.

B.M. 125
 U.S. Elev.
 El. 330.24

I 89-2(10)
 STAGE 2 CONSTRUCTION
 SHEET 23 OF 215

RICHMOND-WILLISTON
 I-89-2 (9)
 Webster-Martin, Inc. 4-57
 Plotted-Trombly W.G. Traced-WG-59
 Sheet 23 of 225

CONTRACT II Const. R.O.W.