

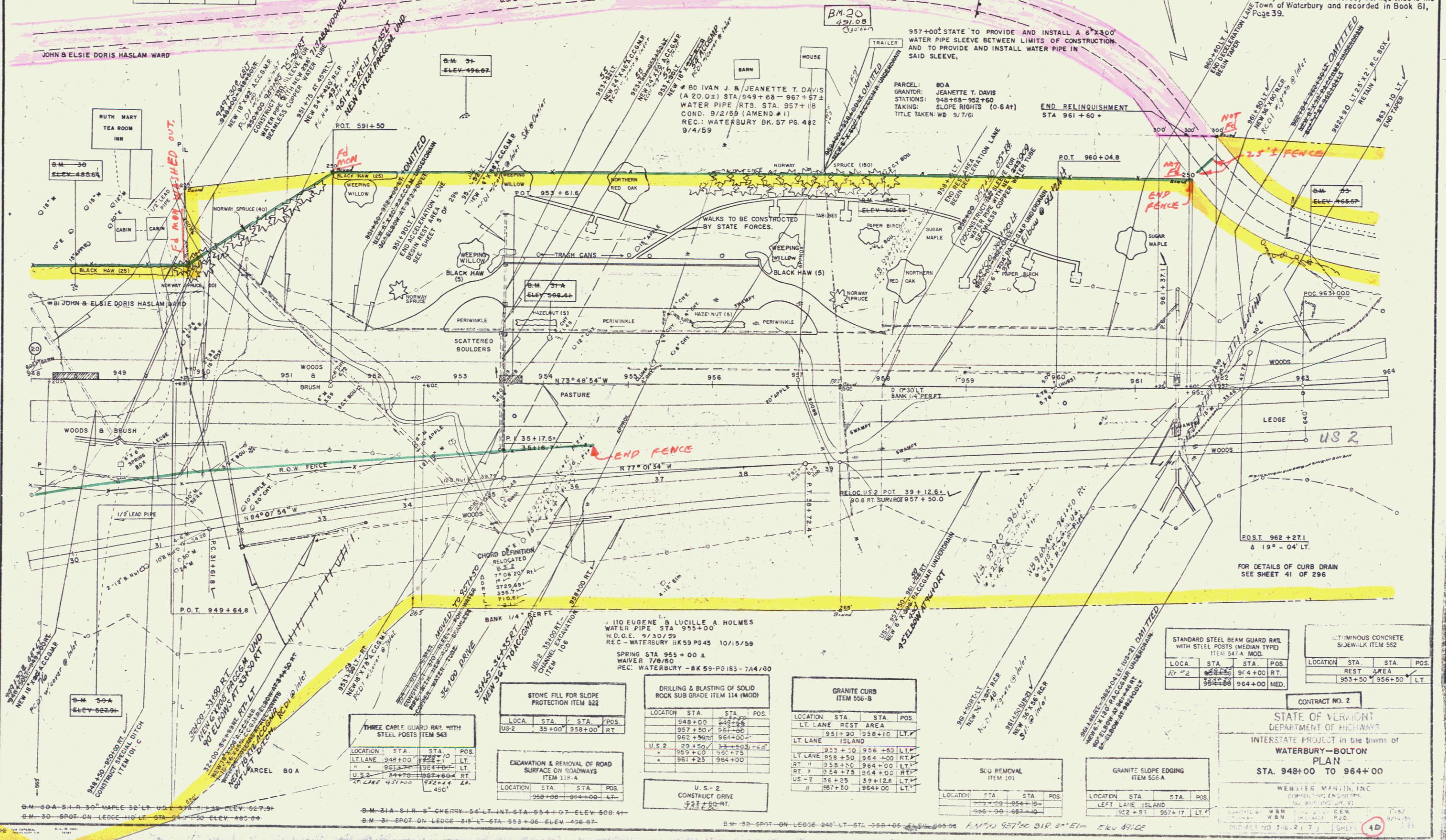
DEMOLITION & REMOVAL OF BUILDING ITEM 566				PROPERTY LINE FENCE ITEM 563-B (MOD.) W/ STEEL POSTS				PROPERTY LINE FENCE ITEM 563-B (MOD.) W/ STEEL POSTS			
BLDG. NO.	STA.	POS.	LOC.	STA.	POS.	LOC.	STA.	POS.	LOC.	STA.	POS.
NO. 20	948+00	LT.	RT. LANE	948+00	959+50	RT.	949+85	961+65	LT.		
			LT. LANE	948+00	959+50	LT.					

NOTE: For Summary of Landscape Materials See Sheet 34 of 296

EUGENE E. & LUCILLE A. HOLMES

PLANK GUARD RAIL WITH PRESERVATIVE TREATMENT ITEM 541-A (BARRICADE)			
LOCATION	STA.	POS.	LT.
	959+00		

Control of section of U.S. Route 2 beginning at a point in the center line of said highway, 1,193+ miles easterly from the believed Waterbury-Bolton Town Line, 190 feet southwesterly from survey sta. 939+80 and 152 southwesterly at right angle from side line survey sta. 15+80 of Highway Project 1-89-2(2) Montpelier-Williston, thence 2,218+ westerly along Rte 2 survey sta. 951+60 to a point 300 feet southerly of GREEN MOUNTAIN POWER CORP. is hereby relinquished to the Town of Waterbury and recorded in Book 61, Page 39.



STONE FILL FOR SLOPE PROTECTION ITEM 522			
LOCATION	STA.	STA.	POS.
U.S. 2	35+00	958+00	RT.

DRILLING & BLASTING OF SOLID ROCK SUB GRADE ITEM 114 (MOD.)			
LOCATION	STA.	STA.	POS.
U.S. 2	20+50	958+00	LT.
	959+00	964+00	RT.
	961+25	964+00	LT.

GRANITE CURBS ITEM 556-B			
LOCATION	STA.	STA.	POS.
LT. LANE	951+20	958+10	LT.
ISLAND	953+10	956+50	LT.
LT. LANE	959+50	964+00	RT.
RT.	954+75	964+00	RT.
U.S. 2	956+25	959+12.6	LT.
U.S. 2	957+50	964+00	LT.

SKID REMOVAL ITEM 101			
LOCATION	STA.	STA.	POS.
	959+00	964+00	LT.
	956+00	964+00	LT.

GRANITE SLOPE EDGING ITEM 556-A			
LOCATION	STA.	STA.	POS.
LEFT LANE ISLAND	952+85	957+17	LT.

THREE CURB GUARD RAIL WITH STEEL POSTS ITEM 543			
LOCATION	STA.	STA.	POS.
LT. LANE	948+00	959+50	LT.
U.S. 2	944+75	957+80	RT.
LT. LANE	948+00	959+50	LT.

EXCAVATION & REMOVAL OF ROAD SURFACE ON ROADWAYS ITEM 119-A			
LOCATION	STA.	STA.	POS.
U.S. 2	958+00	964+00	LT.

STANDARD STEEL BEAM GUARD RAIL WITH STEEL POSTS (MEDIAN TYPE) ITEM 547-A MOD.			
LOCATION	STA.	STA.	POS.
RT. LANE	952+25	964+00	RT.
	954+66	964+00	MED.

CONTINUOUS CONCRETE SIDEWALK ITEM 562			
LOCATION	STA.	STA.	POS.
REST AREA	953+50	956+50	LT.

CONTRACT NO. 2

STATE OF VERMONT
DEPARTMENT OF HIGHWAYS

INTERSTATE PROJECT in the town of
WATERBURY-BOLTON

PLAN
STA. 948+00 TO 964+00

WEBSTER MARTIN, INC.
CONSULTING ENGINEERS
100 RIVER ST. SUITE 200
WATERBURY, VT. 05671
PHONE: 802-244-1111 FAX: 802-244-1112

DATE: 9/14/99
PROJECT NO: 1-89-2(2) SHEET 4D