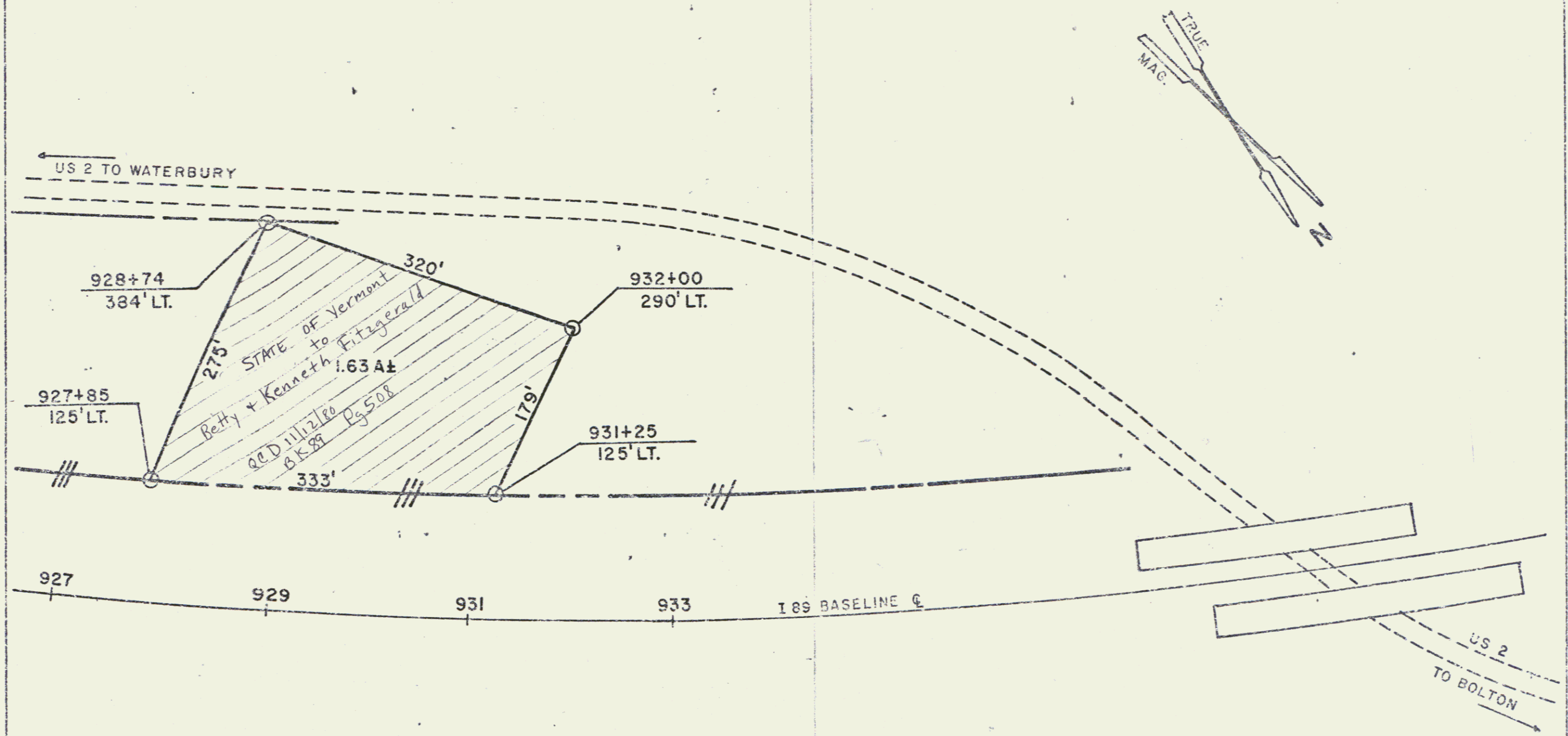


ACQUIRED FROM JOHN D. & DOROTHY S. FARR BY COND.
 ON AUGUST 14, 1959. RECORDED IN BK. 57, PG. 444 ON
 AUGUST 18, 1959, TOWN OF WATERBURY.



REFERENCE SHEET 34 OF 296

STATE OF VERMONT AGENCY OF TRANSPORTATION		
TOWN OF WATERBURY		(36A)
WATERBURY-BOLTON I 89-2(7)		
APPROX. SCALE 1"=100'	DATE 10/29/50	DRAWN BY NDB

