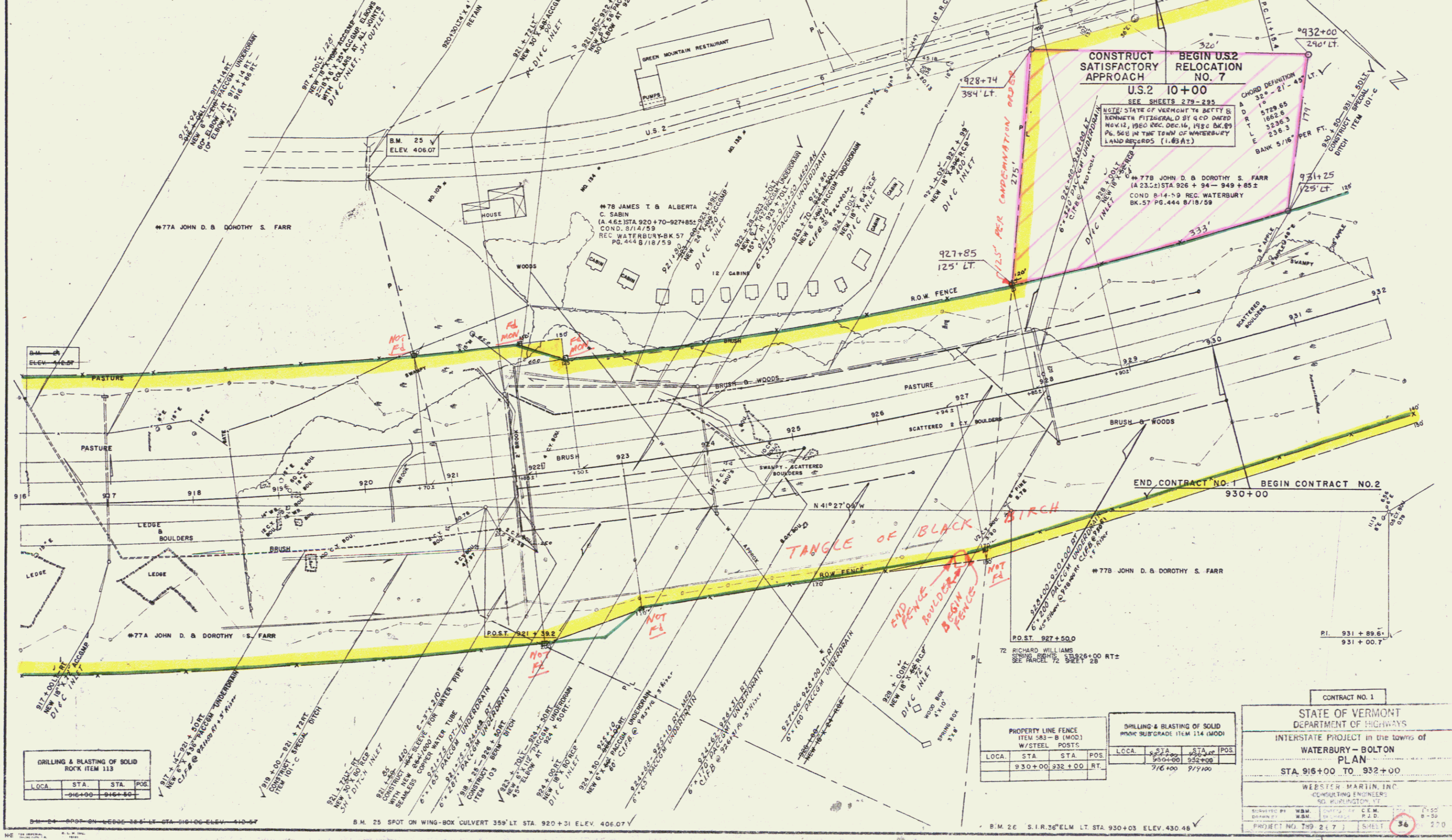


THREE CABLE GUARD RAIL WITH STEEL POSTS ITEM 543				DRILLING & BLASTING OF SOLID ROCK SUBGRADE ITEM 114 (MOD)				SO2 REMOVAL ITEM 10				PROPERTY LINE FENCE ITEM 543-B (MOD) W/STEEL POSTS			
LOCA	STA	STA	POS	LOCA	STA	STA	POS	LOCA	STA	STA	POS	LOCA	STA	STA	POS
LT LANE	916+00	922+28	7	916+00	919+00			916+00	920+00			916+00	930+00		RT
RT LANE	916+00	918+50	7	919+00	920+28			921+75	924+00			916+00	927+85		LT
				924+00	930+00										

CONTRACT NO. 2
 MAINTENANCE OF TRAFFIC
 CONSTRUCT TEMP ROADWAY
 STA 9+00 - STA 11+50 LT
 SEE SPECIAL PROVISION NOS
 SEE SHEETS TO

THREE CABLE GUARD RAIL WITH STEEL POSTS ITEM 543			
LOCA	STA	STA	POS
RT LANE	931+84	932+00	LT
US-2	10+00	11+50	LT



DRILLING & BLASTING OF SOLID ROCK ITEM 113			
LOCA	STA	STA	POS
	916+00	916+50	

PROPERTY LINE FENCE ITEM 543-B (MOD) W/STEEL POSTS			
LOCA	STA	STA	POS
	930+00	932+00	RT

DRILLING & BLASTING OF SOLID ROCK SUBGRADE ITEM 114 (MOD)			
LOCA	STA	STA	POS
	930+00	932+00	
	916+00	917+00	

CONTRACT NO. 1

STATE OF VERMONT
 DEPARTMENT OF HIGHWAYS

INTERSTATE PROJECT in the town of
 WATERBURY - BOLTON

PLAN
 STA. 916+00 TO 932+00

WEBSTER MARTIN, INC.
 CONSULTING ENGINEERS
 60 WASHINGTON ST.
 WASHINGTON, VT

DESIGNED BY: W.M. (W.M.)
 DRAWN BY: W.M. (W.M.)
 CHECKED BY: C.E.M. (C.E.M.)
 P.J.D. (P.J.D.)

PROJECT NO. 759 217 SHEET 36 270